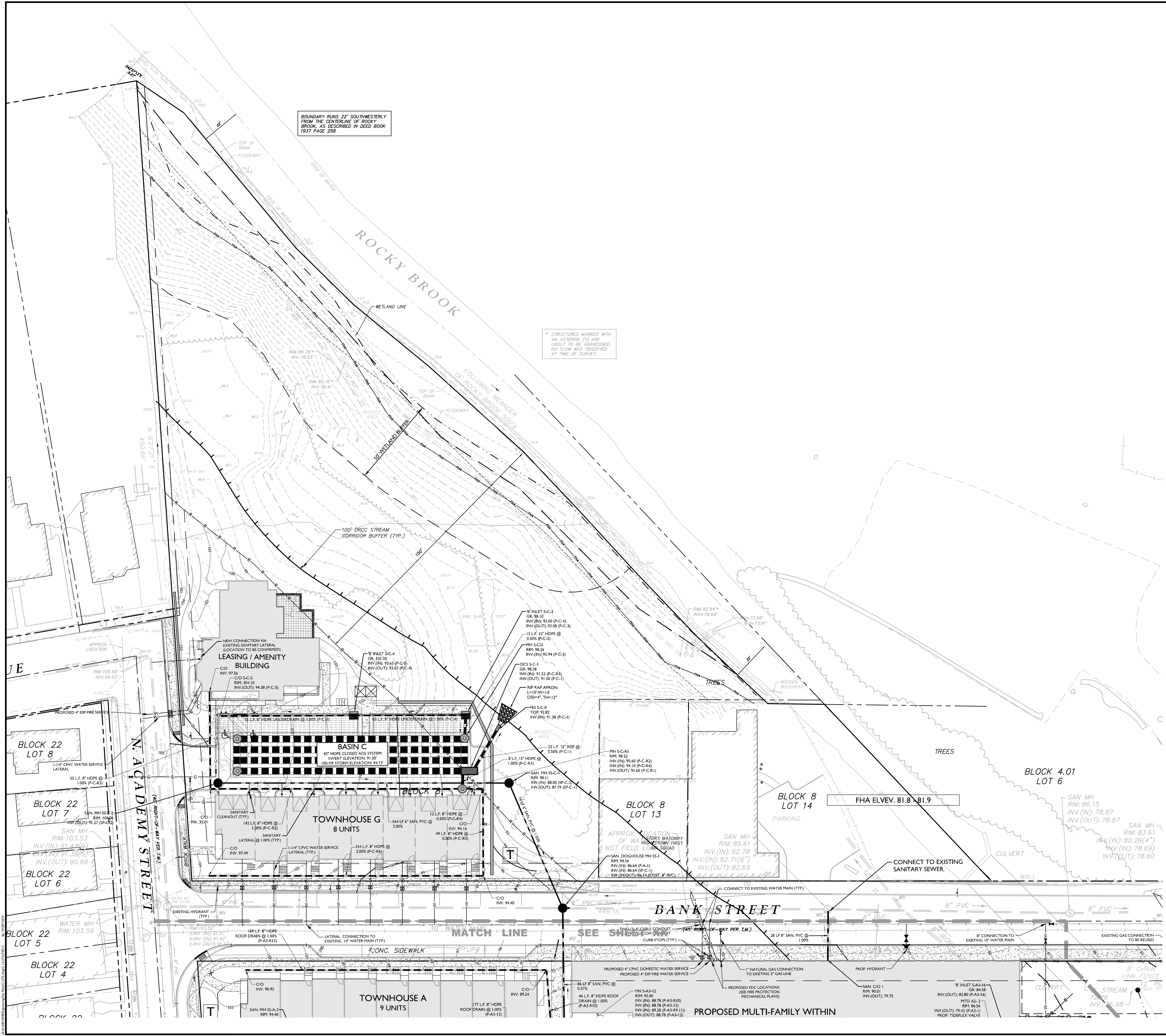


BOUNDARY RUNS 22' SOUTHWESTERLY FROM THE CENTERLINE OF ROCKY BROOK, AS DESCRIBED IN DEED BOOK 1937 PAGE 258.

* STRUCTURES MARKED WITH AN ASTERISK (*) ARE LIKELY TO BE ABANDONED. NO FLOW WAS OBSERVED AT TIME OF SURVEY.



EXISTING	LEGEND	PROPOSED
---	TRaverse LINE, CENTER LINE OR BASELINE (L&E, AS SUCH)	---
---	RIGHT OF WAY LINE	---
---	PROPERTY LINE	---
---	EDGE OF PAVEMENT	---
---	CURB	---
---	DEPRESSED CURB	---
---	SIDEWALK	---
---	FENCES	---
---	TREELINE	---
---	ROADWAY SIGNS	---
---	WETLAND LINE	---
---	MUNICIPAL BOUNDARY LINE	---
---	8" INLET	---
---	8" INLET	---
---	STORM MANHOLE	---
---	SANITARY MANHOLE	---
---	FLARED END SECTION	---
---	HEADWALL	---
---	HYDRANT	---
---	POLE MOUNTED LIGHT	---
---	CABLE TV CONDUIT	---
---	CATV	---
---	WATER MAIN	---
---	GAS MAIN	---
---	TELEPHONE CONDUIT	---
---	ELECTRIC CONDUIT	---
---	SANITARY PIPE	---
---	STORM PIPE	---

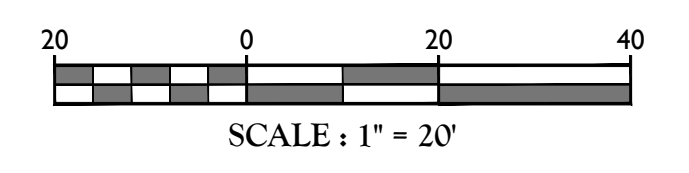
Y.P.
YOSEF PORTNOY
 ENGINEER - LICENSE NUMBER: GE3388

PRELIMINARY & FINAL MAJOR SITE PLAN
 FOR
PRC HIGHTSTOWN
 BLOCK 8, LOT 12, BLOCK 21, LOTS 1-14, 20 & 26, BLOCK 30, LOTS 1-7 & 10-13
 BOROUGH OF HIGHTSTOWN
 MERCER COUNTY
 NEW JERSEY

RED BANK OFFICE
 Corporate Headquarters
 331 Newtown Springs Road
 Suite 203
 Red Bank, NJ 07071
 Phone: 732.383.1950
 Fax: 732.383.1984

SCALE: AS SHOWN DATE: 8/14/20 DRAWN BY: RT CHECKED BY: YP
 PROJECT NUMBER: 16001946 DRAWING NAME: CUTILL

SHEET TITLE: UTILITIES PLAN
 SHEET NUMBER: 12 of 30



NOTE: DO NOT SCALE DRAWINGS FOR CONSTRUCTION.