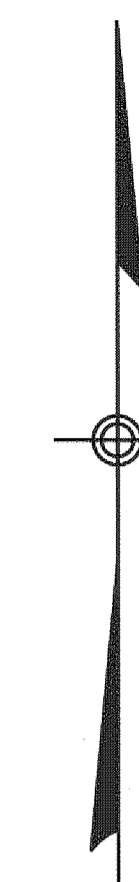


REVISIONS		
DATE	NAME	N.J. LIC. NO.
11/01/06	CHARLES E. SZOVATI	GS-35887
12/01/07	CHARLES E. SZOVATI	GS-35887
12/12/08	CHARLES E. SZOVATI	GS-35887
12/31/09	FREDERICK A. CRUCILI	NJPE&LS 19093
12/31/10	FREDERICK A. CRUCILI	NJPE&LS 19093
12/31/11	FREDERICK A. CRUCILI	NJPE&LS 19093

EAST WINDSOR TOWNSHIP  
MERCER COUNTY



EAST WINDSOR TOWNSHIP  
MERCER COUNTY

EAST WINDSOR TOWNSHIP  
MERCER COUNTY

EAST WINDSOR TOWNSHIP  
MERCER COUNTY

LEGEND:

① SHEET NUMBER

② BLOCK NUMBER

NOTES:

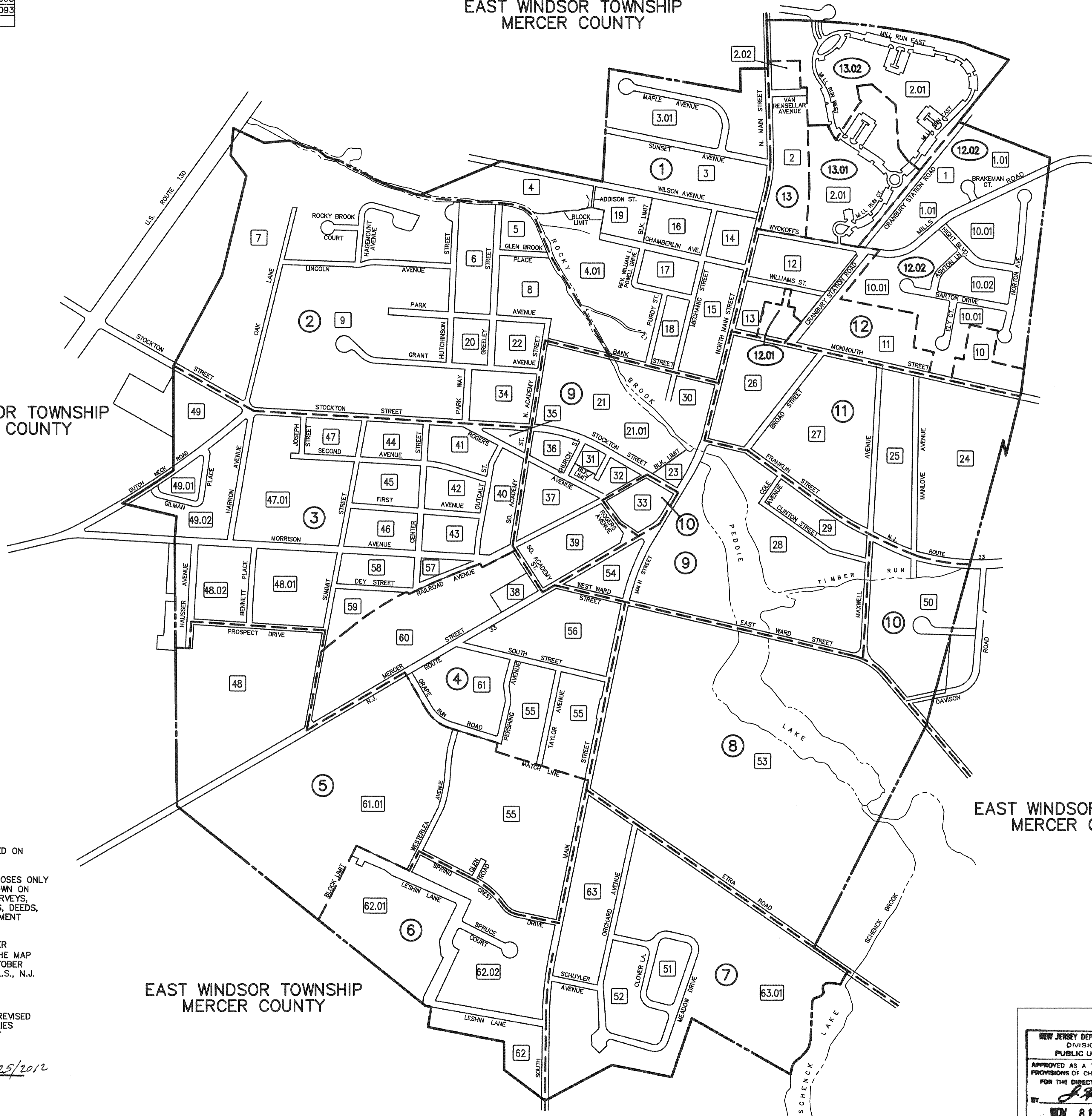
THIS MAP SUPERCEDES THE TAX MAP APPROVED ON NOVEMBER 8, 1965, SERIAL NO. 431.

THIS MAP TO BE USED FOR ASSESSMENT PURPOSES ONLY THE AREAS, BOUNDARIES AND DIMENSIONS SHOWN ON THIS TAX MAP ARE DERIVED FROM GROUND SURVEYS, AERIAL SURVEYS, AND RECORDED PLANS, MAPS, DEEDS, AND WILLS AND ARE TO BE USED FOR ASSESSMENT PURPOSES ONLY.

THIS MAP HAS BEEN REDRAWN USING COMPUTER AIDED DRAFTING/DESIGN (CAD/D) BASED ON THE MAP PREPARED BY J.H. DIMARIS, P.L.S., DATED OCTOBER 1965, LAST REVISED BY NEIL I. VAN CLEEF, P.L.S., N.J. LIC. NO. 13856, DATED DECEMBER 1, 2004.

I HEREBY CERTIFY THAT THIS MAP HAS BEEN REVISED UNDER MY IMMEDIATE SUPERVISION AND COMPLIES WITH THE LAWS OF THE STATE OF NEW JERSEY

*Frederick A. Crucili* 1/25/2012  
**FREDERICK A. CRUCILI**  
N.J.P.E. & L.S. NO. 19093

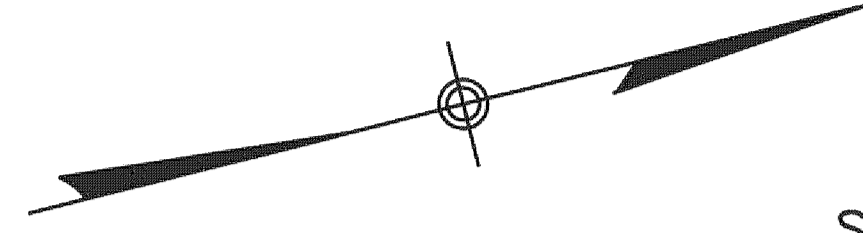


NEW JERSEY DEPARTMENT OF THE TREASURY  
DIVISION OF TAXATION  
PROPERTY ADMINISTRATION  
APPROVED AS A TAX MAP PURSUANT TO THE AUTHORITY OF  
N.J.S.A. 54:1-18 & 54:9-1  
FOR THE DIRECTOR, DIVISION OF TAXATION  
*Thomas A. Ryan* C.T.A.  
*Santo C. DiDonato* C.T.A.  
BY *Santo C. DiDonato* SUPERVISING FIELD REPRESENTATIVE  
DATE JUN 29 2007 SERIAL NO. 911

NEW JERSEY DEPARTMENT OF THE TREASURY  
DIVISION OF TAXATION  
PUBLIC UTILITY TAX BUREAU  
APPROVED AS A TAX MAP PURSUANT TO THE  
PROVISIONS OF CHAPTER 175, LAWS OF 1913, ETC.  
FOR THE DIRECTOR, DIVISION OF TAXATION  
BY *Santo C. DiDonato*  
DATE NOV 8 1965 SERIAL NO. 431

**TAX MAP**  
**BOROUGH OF HIGHTSTOWN**  
MERCER COUNTY, NEW JERSEY  
SCALE: 1" = 400' OCTOBER 1965  
**VAN NOTE - HARVEY ASSOCIATES**  
CONSULTING ENGINEERS & LAND SURVEYORS  
234 NASSAU STREET,  
PRINCETON, NEW JERSEY  
TO SHOW CONDITIONS AS OF DECEMBER 31, 2011

REVISIONS		
DATE	NAME	N.J. LIC. NO.
11/01/06	CHARLES E. SZOVATI	GS-35887
12/01/07	CHARLES E. SZOVATI	GS-35887
12/12/08	CHARLES E. SZOVATI	GS-35887
12/31/09	FREDERICK A. CRUCILI	N.J.P.E. & L.S. 19093
12/31/10	FREDERICK A. CRUCILI	N.J.P.E. & L.S. 19093
12/31/11	FREDERICK A. CRUCILI	N.J.P.E. & L.S. 19093



SHEET 2

SHEET 9

SHEET 11

MATCH LINE

SHEET 2

EAST WINDSOR TOWNSHIP  
MERCER COUNTY

EAST WINDSOR TOWNSHIP  
MERCER COUNTY

EAST WINDSOR TOWNSHIP  
MERCER COUNTY

DIVISION OF TAXATION  
PROPERTY ADMINISTRATION  
APPROVED AS A TAX MAP PURSUANT TO THE AUTHORITY OF  
N.J.S.A. 54:13 & 54:14  
FOR THE DIRECTOR, DIVISION OF TAXATION  
*Neil I. Van Cleeef* G.T.A.  
THOMAS H. HULL, COUNTY ENGINEER, FIELD REPRESENTATIVE  
*Neil I. Van Cleeef* G.T.A.  
DAVID G. GOODRICH, SUPERVISOR, FIELD REPRESENTATIVE  
JUN 29 2007 SERIAL NO. 911

THIS MAP HAS BEEN REDRAWN USING COMPUTER AIDED DRAFTING/DESIGN (CAD/D) BASED ON THE MAP PREPARED BY J.H. DITMARS, P.L.S., DATED OCTOBER 1965, LAST REVISED BY NEIL I. VAN CLEEVE, P.L.S., N.J. LIC. NO. 13856, DATED DECEMBER 1, 2004

I HEREBY CERTIFY THAT THIS MAP HAS BEEN REVISED UNDER MY IMMEDIATE SUPERVISION AND COMPLIES WITH THE LAWS OF THE STATE OF NEW JERSEY

*Fredrick A. Crucili* - 11/25/2012  
**FREDERICK A. CRUCILI**  
N.J.P.E. & L.S. NO. 19093

NEW JERSEY DEPARTMENT OF THE TREASURY  
DIVISION OF TAXATION  
PUBLIC UTILITY TAX BUREAU  
APPROVED AS A TAX MAP PURSUANT TO THE PROVISIONS OF CHAPTER 175, LAWS OF 1913, ETC.  
FOR THE DIRECTOR, DIVISION OF TAXATION  
BY *F.A. Crucili*  
DATE **NOV 8 1965** SERIAL NO. **431**

**TAX MAP**  
**BOROUGH OF HIGHTSTOWN**  
MERCER COUNTY, NEW JERSEY  
SCALE: 1" = 100' OCTOBER 1965  
**VAN NOTE - HARVEY ASSOCIATES**  
CONSULTING ENGINEERS & LAND SURVEYORS  
234 NASSAU STREET,  
PRINCETON, NEW JERSEY



REVISIONS		
DATE	NAME	N.J. LIC. NO.
11/01/06	CHARLES E. SZOVATI	GS-35887
12/01/07	CHARLES E. SZOVATI	GS-35887
12/12/08	CHARLES E. SZOVATI	GS-35887
12/31/09	FREDERICK A. CRUCILI	NJPE&LS 19093
12/31/10	FREDERICK A. CRUCILI	NJPE&LS 19093
12/31/11	FREDERICK A. CRUCILI	NJPE&LS 19093

THIS MAP HAS BEEN REDRAWN USING COMPUTER AIDED DRAFTING/DESIGN (CAD/D) BASED ON THE MAP PREPARED BY J.H. DITMARS, P.L.S., DATED OCTOBER 1965, LAST REVISED BY NEIL I. VAN CLEEF, P.L.S., N.J. LIC. NO. 13856, DATED DECEMBER 1, 2004

I HEREBY CERTIFY THAT THIS MAP HAS BEEN REVISED UNDER MY IMMEDIATE SUPERVISION AND COMPLIES WITH THE LAWS OF THE STATE OF NEW JERSEY

*Frederick A. Crucili 1/25/2012*  
**FREDERICK A. CRUCILI**  
 N.J.P.E. & L.S. NO. 19093

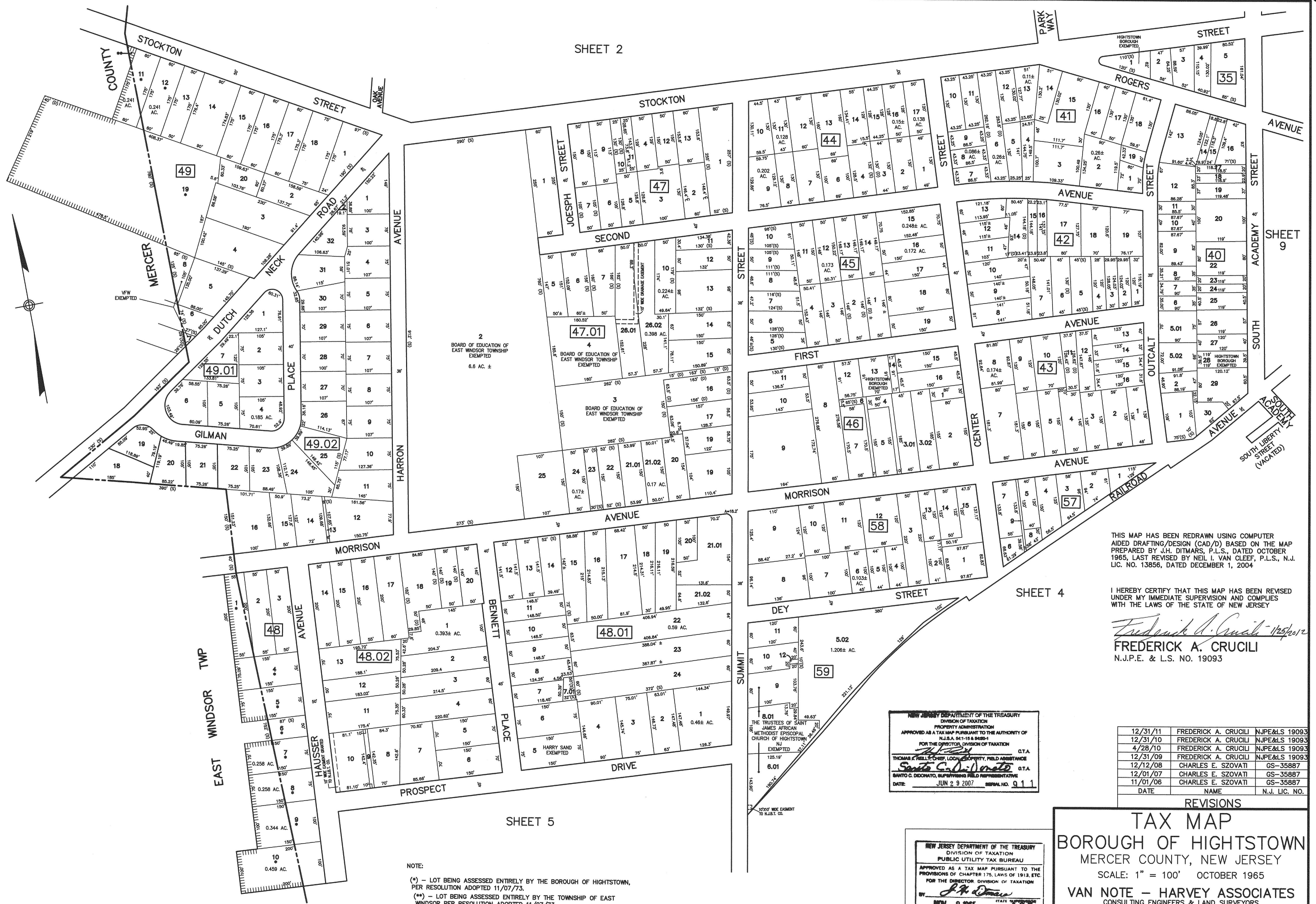


SHEET 3

NEW JERSEY DEPARTMENT OF TREASURY  
 DIVISION OF TAXATION  
 APPROVED AS A TAX MAP PURSUANT TO THE PROVISIONS OF CHAPTER 175, LAWS OF 1913, ETC. FOR THE DIRECTOR, DIVISION OF TAXATION  
 THOMAS J. PELLICCI, CHIEF, LOCAL PROPERTY FIELD ASSISTANCE  
*Frederick A. Crucili*  
 JUN 29 2007

NEW JERSEY DEPARTMENT OF THE TREASURY  
 DIVISION OF TAXATION  
 PUBLIC UTILITY TAX BUREAU  
 APPROVED AS A TAX MAP PURSUANT TO THE PROVISIONS OF CHAPTER 175, LAWS OF 1913, ETC. FOR THE DIRECTOR, DIVISION OF TAXATION  
*F.A. Crucili*  
 DATE NOV 8 1965 SERIAL NO. 481

**TAX MAP**  
**BOROUGH OF HIGHTSTOWN**  
 MERCER COUNTY, NEW JERSEY  
 SCALE: 1" = 100' OCTOBER 1965  
**VAN NOTE - HARVEY ASSOCIATES**  
 CONSULTING ENGINEERS & LAND SURVEYORS  
 234 NASSAU STREET,  
 PRINCETON, NEW JERSEY



THIS MAP HAS BEEN REDRAWN USING COMPUTER AIDED DRAFTING/DESIGN (CAD/D) BASED ON THE MAP PREPARED BY J.H. DITMARS, P.L.S., DATED OCTOBER 1965, LAST REVISED BY NEIL I. VAN CLEEF, P.L.S., N.J. LIC. NO. 13856, DATED DECEMBER 1, 2004

I HEREBY CERTIFY THAT THIS MAP HAS BEEN REVISED UNDER MY IMMEDIATE SUPERVISION AND COMPLIES WITH THE LAWS OF THE STATE OF NEW JERSEY

*Frederick A. Crucili - 11/25/2012*  
**FREDERICK A. CRUCILI**  
 N.J.P.E. & L.S. NO. 19093

NEW JERSEY DEPARTMENT OF THE TREASURY  
 DIVISION OF TAXATION  
 PROPERTY ADMINISTRATION  
 APPROVED AS A TAX MAP PURSUANT TO THE AUTHORITY OF N.J.S.A. 54:16-8 & 16B-1  
 FOR THE DIRECTOR, DIVISION OF TAXATION  
*[Signature]* G.T.A.  
 THOMAS E. HELLY, CHIEF, LOCAL PROPERTY, FIELD ASSISTANCE  
*[Signature]* G.T.A.  
 SANTO C. DICOMATO, SUPERVISING FIELD REPRESENTATIVE  
 DATE: JUN 29 2007 SERIAL NO. 911

NEW JERSEY DEPARTMENT OF THE TREASURY  
 DIVISION OF TAXATION  
 PUBLIC UTILITY TAX BUREAU  
 APPROVED AS A TAX MAP PURSUANT TO THE PROVISIONS OF CHAPTER 175, LAWS OF 1913, ETC.  
 FOR THE DIRECTOR, DIVISION OF TAXATION  
*[Signature]*  
 DATE: NOV 8 1965 SERIAL NO. 431

REVISIONS			
DATE	NAME	N.J. LIC. NO.	
12/31/11	FREDERICK A. CRUCILI	NJPE&LS 19093	
12/31/10	FREDERICK A. CRUCILI	NJPE&LS 19093	
4/28/10	FREDERICK A. CRUCILI	NJPE&LS 19093	
12/31/09	FREDERICK A. CRUCILI	NJPE&LS 19093	
12/12/08	CHARLES E. SZOVATI	GS-35887	
12/01/07	CHARLES E. SZOVATI	GS-35887	
11/01/06	CHARLES E. SZOVATI	GS-35887	

**TAX MAP**  
**BOROUGH OF HIGHTSTOWN**  
 MERCER COUNTY, NEW JERSEY  
 SCALE: 1" = 100' OCTOBER 1965  
**VAN NOTE - HARVEY ASSOCIATES**  
 CONSULTING ENGINEERS & LAND SURVEYORS  
 234 NASSAU STREET,  
 PRINCETON, NEW JERSEY

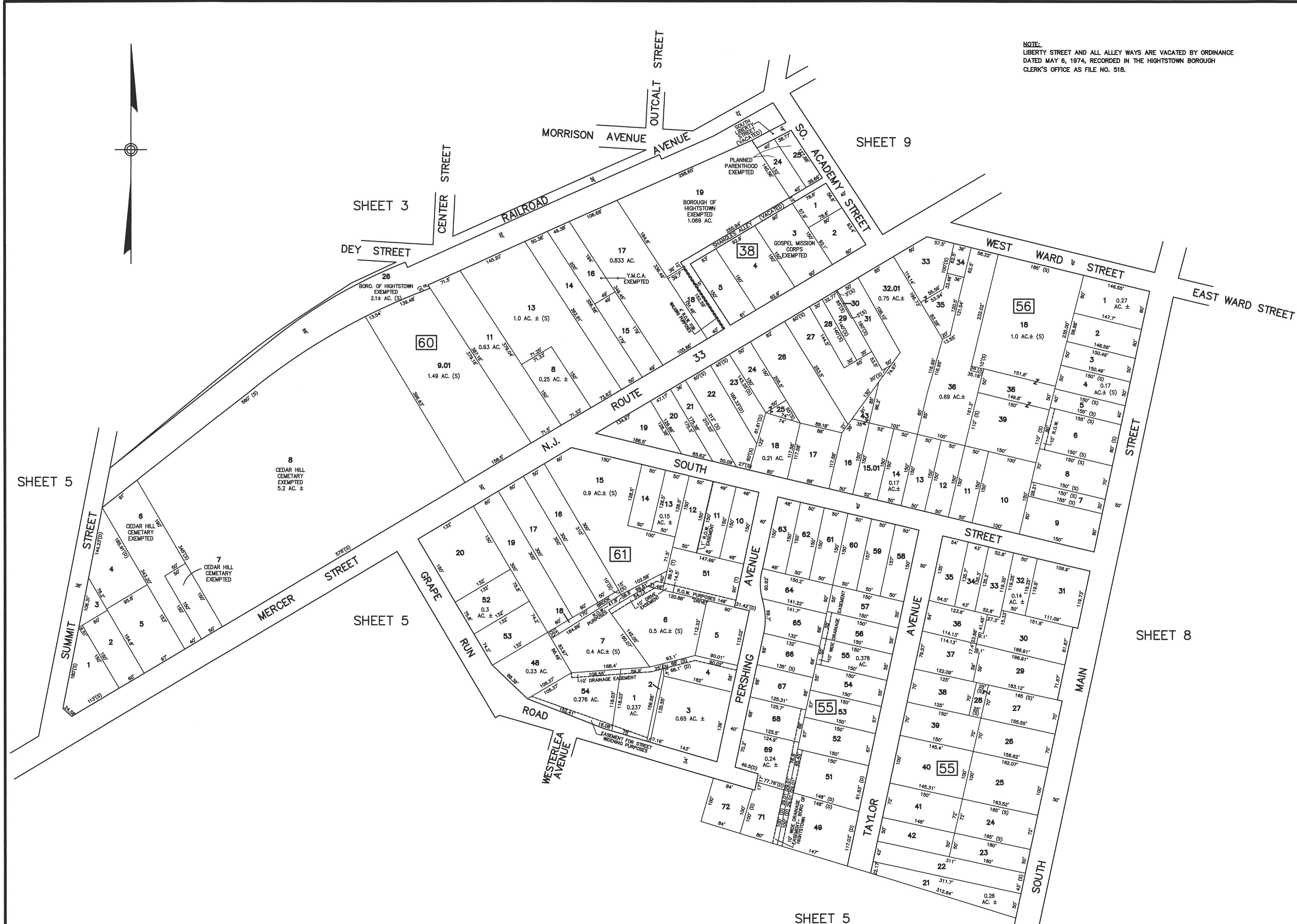
NOTE:  
 (\*) - LOT BEING ASSESSED ENTIRELY BY THE BOROUGH OF HIGHTSTOWN, PER RESOLUTION ADOPTED 11/07/73.  
 (\*\*) - LOT BEING ASSESSED ENTIRELY BY THE TOWNSHIP OF EAST WINDSOR PER RESOLUTION ADOPTED 11/07/73.

NOTE:  
LIBERTY STREET AND ALL ALLEY WAYS ARE VACATED BY ORDINANCE  
DATED MAY 6, 1974, RECORDED IN THE HIGHTSTOWN BOROUGH  
CLERK'S OFFICE AS FILE NO. 518.

THIS MAP HAS BEEN REDRAWN USING COMPUTER  
AIDED DRAFTING/DESIGN (CAD/D) BASED ON THE MAP  
PREPARED BY J.H. DITMARS, P.L.S., DATED OCTOBER  
1965, LAST REVISED BY NEIL I. VAN CLEEF, P.L.S., N.J.  
LIC. NO. 13856, DATED DECEMBER 1, 2004

I HEREBY CERTIFY THAT THIS MAP HAS BEEN REVISED  
UNDER MY IMMEDIATE SUPERVISION AND COMPLIES  
WITH THE LAWS OF THE STATE OF NEW JERSEY

*Frederick A. Crucili 11/29/2012*  
**FREDERICK A. CRUCILI**  
N.J.P.E. & L.S. NO. 19093



DATE	NAME	N.J. LIC. NO.
12/31/11	FREDERICK A. CRUCILI	NJPE&LS 19093
7/21/11	FREDERICK A. CRUCILI	NJPE&LS 19093
12/31/10	FREDERICK A. CRUCILI	NJPE&LS 19093
12/31/09	FREDERICK A. CRUCILI	NJPE&LS 19093
12/12/08	CHARLES E. SZOVATI	GS-35887
12/01/07	CHARLES E. SZOVATI	GS-35887
11/01/06	CHARLES E. SZOVATI	GS-35887

REVISIONS

SHEET 5

NEW JERSEY DEPARTMENT OF THE TREASURY  
DIVISION OF TAXATION  
APPROVED AS A TAX MAP PURSUANT TO THE  
PROVISIONS OF CHAPTER 175, LAWS OF 1913, ETC.  
FOR THE DIRECTOR DIVISION OF TAXATION  
THOMAS A. HELLER, LIC. NO. 10000, FIELD ASSISTANT  
SANTO G. DICICCO, SUPERVISING FIELD REPRESENTATIVE  
DATE: JUN 29 2007 SERIAL NO. 911

NEW JERSEY DEPARTMENT OF THE TREASURY  
DIVISION OF TAXATION  
PUBLIC UTILITY TAX BUREAU  
APPROVED AS A TAX MAP PURSUANT TO THE  
PROVISIONS OF CHAPTER 175, LAWS OF 1913, ETC.  
FOR THE DIRECTOR DIVISION OF TAXATION  
BY: *J.P. Dumas*  
DATE: NOV 8 1965 SERIAL NO. 431

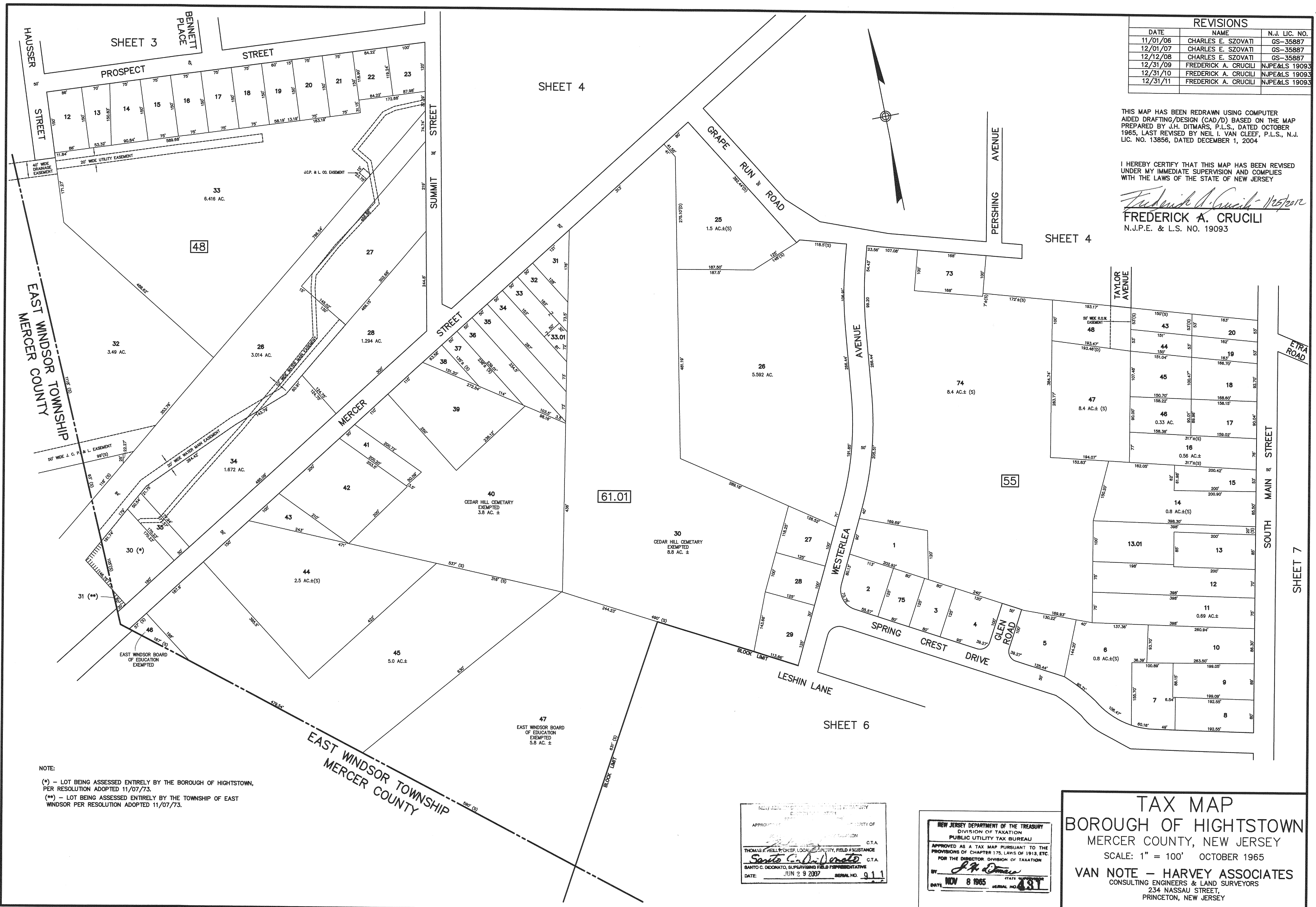
**TAX MAP**  
**BOROUGH OF HIGHTSTOWN**  
MERCER COUNTY, NEW JERSEY  
SCALE: 1" = 100' OCTOBER 1965  
**VAN NOTE - HARVEY ASSOCIATES**  
CONSULTING ENGINEERS & LAND SURVEYORS  
234 NASSAU STREET,  
PRINCETON, NEW JERSEY

REVISIONS		
DATE	NAME	N.J. LIC. NO.
11/01/06	CHARLES E. SZOVATI	GS-35887
12/01/07	CHARLES E. SZOVATI	GS-35887
12/12/08	CHARLES E. SZOVATI	GS-35887
12/31/09	FREDERICK A. CRUCILI	NJPE&LS 19093
12/31/10	FREDERICK A. CRUCILI	NJPE&LS 19093
12/31/11	FREDERICK A. CRUCILI	NJPE&LS 19093

THIS MAP HAS BEEN REDRAWN USING COMPUTER AIDED DRAFTING/DESIGN (CAD/D) BASED ON THE MAP PREPARED BY J.H. DITMARS, P.L.S., DATED OCTOBER 1965. LAST REVISED BY NEIL I. VAN CLEEF, P.L.S., N.J. LIC. NO. 13856, DATED DECEMBER 1, 2004

I HEREBY CERTIFY THAT THIS MAP HAS BEEN REVISED UNDER MY IMMEDIATE SUPERVISION AND COMPLIES WITH THE LAWS OF THE STATE OF NEW JERSEY

*Frederick A. Crucili 11/25/2012*  
**FREDERICK A. CRUCILI**  
 N.J.P.E. & L.S. NO. 19093



NOTE:  
 (\*) - LOT BEING ASSESSED ENTIRELY BY THE BOROUGH OF HIGHTSTOWN, PER RESOLUTION ADOPTED 11/07/73.  
 (\*\*) - LOT BEING ASSESSED ENTIRELY BY THE TOWNSHIP OF EAST WINDSOR PER RESOLUTION ADOPTED 11/07/73.

NEW JERSEY DEPARTMENT OF TREASURY  
 DIVISION OF TAXATION  
 PUBLIC UTILITY TAX BUREAU  
 APPROVED AS A TAX MAP PURSUANT TO THE PROVISIONS OF CHAPTER 175, LAWS OF 1913, ETC. FOR THE DIRECTOR, DIVISION OF TAXATION  
 BY: *J.H. Ditmars*  
 DATE: NOV 8 1965 SERIAL NO. 431

NEW JERSEY DEPARTMENT OF TREASURY  
 DIVISION OF TAXATION  
 PUBLIC UTILITY TAX BUREAU  
 APPROVED AS A TAX MAP PURSUANT TO THE PROVISIONS OF CHAPTER 175, LAWS OF 1913, ETC. FOR THE DIRECTOR, DIVISION OF TAXATION  
 BY: *J.H. Ditmars*  
 DATE: NOV 8 1965 SERIAL NO. 431

**TAX MAP**  
**BOROUGH OF HIGHTSTOWN**  
 MERCER COUNTY, NEW JERSEY  
 SCALE: 1" = 100' OCTOBER 1965  
**VAN NOTE - HARVEY ASSOCIATES**  
 CONSULTING ENGINEERS & LAND SURVEYORS  
 234 NASSAU STREET,  
 PRINCETON, NEW JERSEY

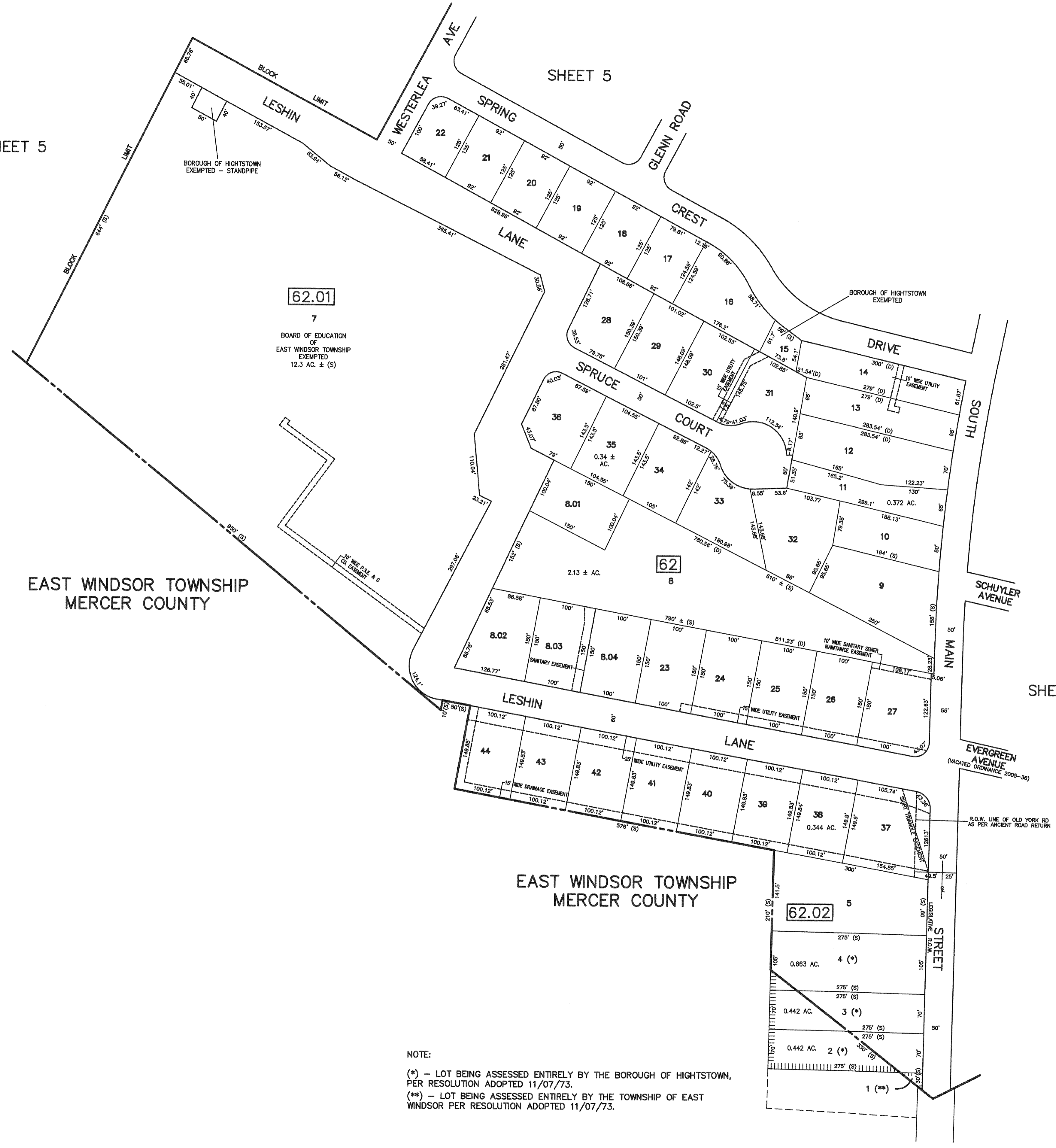
SHEET 5

SHEET 5

SHEET 7

EAST WINDSOR TOWNSHIP  
MERCER COUNTY

EAST WINDSOR TOWNSHIP  
MERCER COUNTY



BOROUGH OF HIGHTSTOWN  
EXEMPTED - STANDPIPE

BOROUGH OF HIGHTSTOWN  
EXEMPTED

62.01  
7  
BOARD OF EDUCATION  
OF  
EAST WINDSOR TOWNSHIP  
EXEMPTED  
12.3 AC. ± (S)

62  
8  
2.13 ± AC.

62.02  
5  
0.663 AC.

NOTE:  
 (\*) - LOT BEING ASSESSED ENTIRELY BY THE BOROUGH OF HIGHTSTOWN,  
 PER RESOLUTION ADOPTED 11/07/73.  
 (\*\*) - LOT BEING ASSESSED ENTIRELY BY THE TOWNSHIP OF EAST  
 WINDSOR PER RESOLUTION ADOPTED 11/07/73.

THIS MAP HAS BEEN REDRAWN USING COMPUTER  
AIDED DRAFTING/DESIGN (CAD/D) BASED ON THE MAP  
PREPARED BY J.H. DITMARS, P.L.S., DATED OCTOBER  
1965, LAST REVISED BY NEIL I. VAN CLEEF, P.L.S., N.J.  
LIC. NO. 13856, DATED DECEMBER 1, 2004

I HEREBY CERTIFY THAT THIS MAP HAS BEEN REVISED  
UNDER MY IMMEDIATE SUPERVISION AND COMPLIES  
WITH THE LAWS OF THE STATE OF NEW JERSEY

*Frederick A. Crucili 11/25/2011*  
**FREDERICK A. CRUCILI**  
 N.J.P.E. & L.S. NO. 19093

NEW JERSEY DEPARTMENT OF THE TREASURY  
 DIVISION OF TAXATION  
 PROPERTY ADMINISTRATION  
 APPROVED AS A TAX MAP PURSUANT TO THE AUTHORITY OF  
 N.J.S.A. 54:1-15 & 54:90-1  
 FOR THE DIRECTOR, DIVISION OF TAXATION  
*Thomas C. DeDonato* C.T.A.  
 THOMAS C. DE DONATO, SUPERVISOR, FIELD ASSISTANCE  
*Santo C. DeDonato* C.T.A.  
 SANTO C. DE DONATO, SUPERVISOR, FIELD REPRESENTATIVE  
 DATE: JUN 29 2007 SERIAL NO. 911

DATE	NAME	N.J. LIC. NO.
12/31/11	FREDERICK A. CRUCILI	NJPE&LS 19093
12/31/10	FREDERICK A. CRUCILI	NJPE&LS 19093
12/31/09	FREDERICK A. CRUCILI	NJPE&LS 19093
12/12/08	CHARLES E. SZOVATI	GS-35887
12/01/07	CHARLES E. SZOVATI	GS-35887
11/01/06	CHARLES E. SZOVATI	GS-35887

REVISIONS

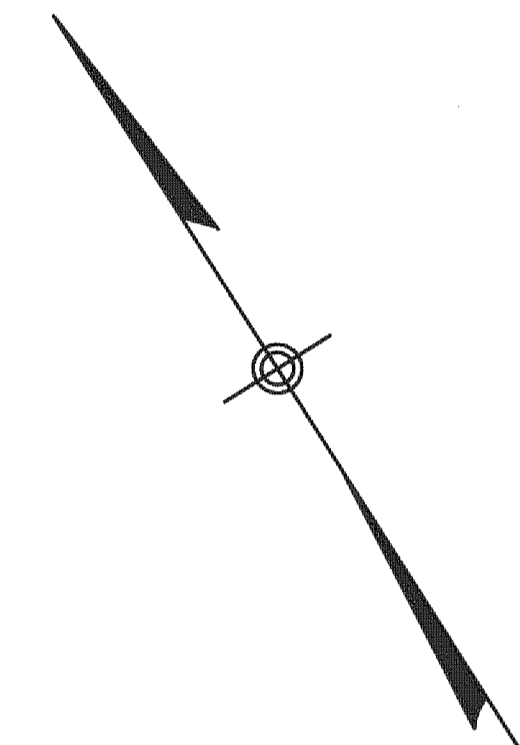
NEW JERSEY DEPARTMENT OF THE TREASURY  
 DIVISION OF TAXATION  
 PUBLIC UTILITY TAX BUREAU  
 APPROVED AS A TAX MAP PURSUANT TO THE  
 PROVISIONS OF CHAPTER 175, LAWS OF 1913, ETC.  
 FOR THE DIRECTOR, DIVISION OF TAXATION  
 BY: *J.H. Ditmars*  
 DATE: NOV 8 1965 SERIAL NO. 431

**TAX MAP**  
**BOROUGH OF HIGHTSTOWN**  
 MERCER COUNTY, NEW JERSEY  
 SCALE: 1" = 100' OCTOBER 1965  
**VAN NOTE - HARVEY ASSOCIATES**  
 CONSULTING ENGINEERS & LAND SURVEYORS  
 234 NASSAU STREET,  
 PRINCETON, NEW JERSEY

THIS MAP HAS BEEN REDRAWN USING COMPUTER AIDED DRAFTING/DESIGN (CAD/D) BASED ON THE MAP PREPARED BY J.H. DITMARS, P.L.S., DATED OCTOBER 1965, LAST REVISED BY NEIL I. VAN CLEEF, P.L.S., N.J. LIC. NO. 13856, DATED DECEMBER 1, 2004.

I HEREBY CERTIFY THAT THIS MAP HAS BEEN REVISED UNDER MY IMMEDIATE SUPERVISION AND COMPLIES WITH THE LAWS OF THE STATE OF NEW JERSEY

*Frederick A. Crucili 1/25/12*  
**FREDERICK A. CRUCILI**  
N.J.P.E. & L.S. NO. 19093



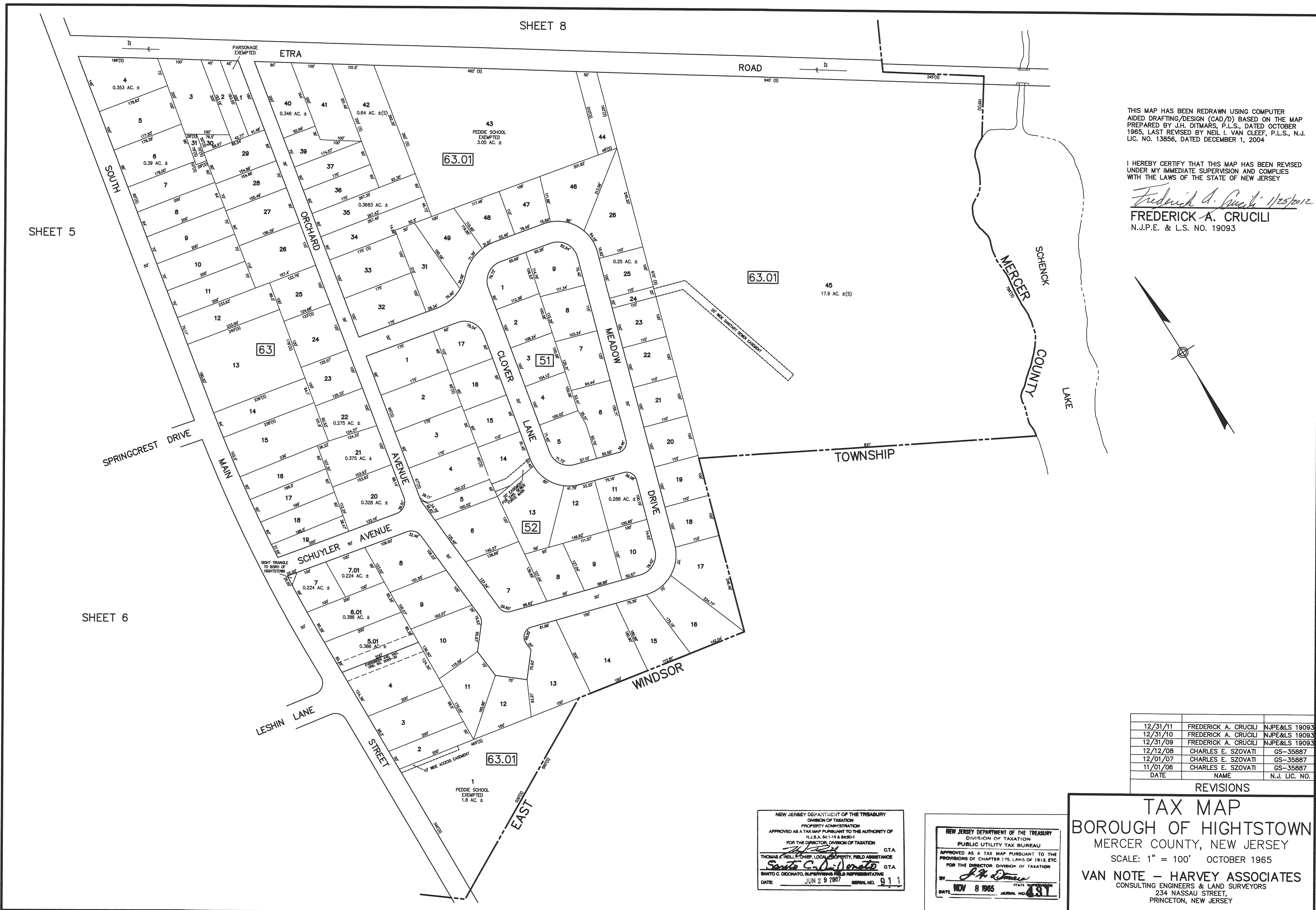
DATE	NAME	N.J. LIC. NO.
12/31/11	FREDERICK A. CRUCILI	NJPE&LS 19093
12/31/10	FREDERICK A. CRUCILI	NJPE&LS 19093
12/31/09	FREDERICK A. CRUCILI	NJPE&LS 19093
12/12/08	CHARLES E. SZOVATI	GS-35887
12/01/07	CHARLES E. SZOVATI	GS-35887
11/01/06	CHARLES E. SZOVATI	GS-35887

REVISIONS

**TAX MAP**  
**BOROUGH OF HIGHTSTOWN**  
MERCER COUNTY, NEW JERSEY  
SCALE: 1" = 100' OCTOBER 1965  
**VAN NOTE - HARVEY ASSOCIATES**  
CONSULTING ENGINEERS & LAND SURVEYORS  
234 NASSAU STREET,  
PRINCETON, NEW JERSEY

NEW JERSEY DEPARTMENT OF THE TREASURY  
DIVISION OF TAXATION  
PROPERTY ADMINISTRATION  
APPROVED AS A TAX MAP PURSUANT TO THE AUTHORITY OF  
N.J.S.A. 54:1-15 & 54:9-1  
FOR THE DIRECTOR, DIVISION OF TAXATION  
*[Signature]* C.T.A.  
THOMAS J. HELLICH, CHIEF, LOCAL PROPERTY, FIELD ASSISTANCE  
*[Signature]* C.T.A.  
BANTO C. DICICCATO, SUPERVISOR, FIELD REPRESENTATIVE  
DATE: JUN 29 2007 SERIAL NO. 911

NEW JERSEY DEPARTMENT OF THE TREASURY  
DIVISION OF TAXATION  
PUBLIC UTILITY TAX BUREAU  
APPROVED AS A TAX MAP PURSUANT TO THE  
PROVISIONS OF CHAPTER 175, LAWS OF 1913, ETC.  
FOR THE DIRECTOR, DIVISION OF TAXATION  
BY: *[Signature]*  
DATE: NOV 8 1965 STATE NO. 437



SHEET 5

SHEET 6

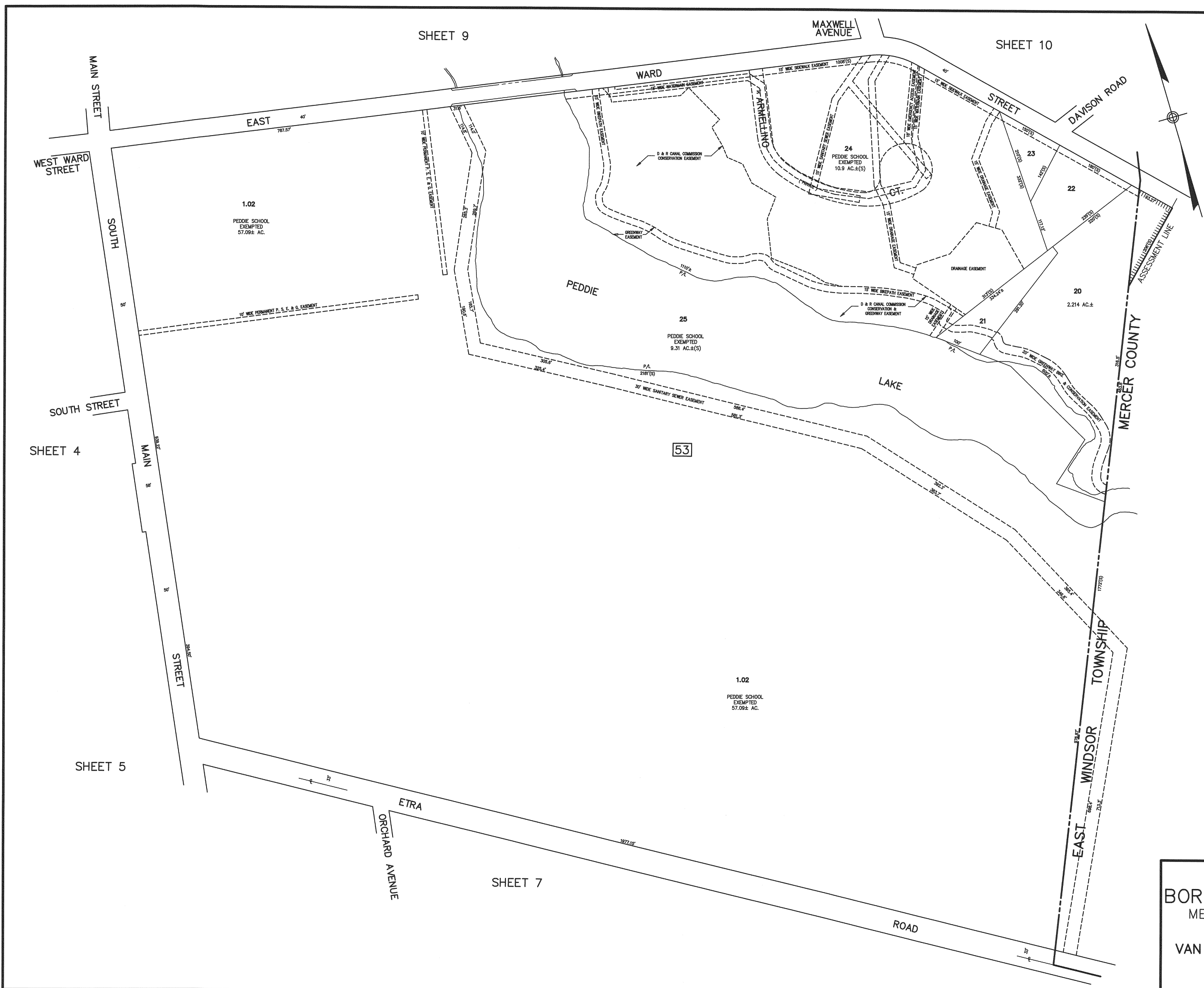
SHEET 7

REVISIONS		
DATE	NAME	N.J. LIC. NO.
11/01/06	CHARLES E. SZOVATI	GS-35887
12/01/07	CHARLES E. SZOVATI	GS-35887
12/12/08	CHARLES E. SZOVATI	GS-35887
12/31/09	FREDERICK A. CRUCILI	N.J.P.E.&L.S 19093
12/31/10	FREDERICK A. CRUCILI	N.J.P.E.&L.S 19093
12/31/11	FREDERICK A. CRUCILI	N.J.P.E.&L.S 19093

THIS MAP HAS BEEN REDRAWN USING COMPUTER AIDED DRAFTING/DESIGN (CAD/D) BASED ON THE MAP PREPARED BY J.H. DITMARS, P.L.S., DATED OCTOBER 1965, LAST REVISED BY NEIL I. VAN CLEEF, P.L.S., N.J. LIC. NO. 13856, DATED DECEMBER 1, 2004

I HEREBY CERTIFY THAT THIS MAP HAS BEEN REVISED UNDER MY IMMEDIATE SUPERVISION AND COMPLIES WITH THE LAWS OF THE STATE OF NEW JERSEY

*Frederick A. Crucili 1/25/2012*  
**FREDERICK A. CRUCILI**  
 N.J.P.E. & L.S. NO. 19093



NEW JERSEY DEPARTMENT OF THE TREASURY  
 DIVISION OF TAXATION  
 PROPERTY TAXATION  
 APPROVED AS A TAX MAP PURSUANT TO THE AUTHORITY OF  
 N.J.S.A. 54:13-3 & 54:13-4  
 FOR THE DIRECTOR, DIVISION OF TAXATION  
*Thomas J. Kelly* C.T.A.  
 THOMAS J. KELLY, CHIEF, LOCAL TAXATION, FIELD ASSISTANCE  
*Santo C. DiDonato* C.T.A.  
 SANTO C. DIDONATO, SUPERVISING FIELD REPRESENTATIVE  
 DATE: JUN 9 9 2007 SERIAL NO. 911

NEW JERSEY DEPARTMENT OF THE TREASURY  
 DIVISION OF TAXATION  
 PUBLIC UTILITY TAX BUREAU  
 APPROVED AS A TAX MAP PURSUANT TO THE  
 PROVISIONS OF CHAPTER 175, LAWS OF 1913, ETC.  
 FOR THE DIRECTOR, DIVISION OF TAXATION  
 BY *J.H. Ditmars* STATE  
 DATE: NOV 8 1965 SERIAL NO. 431

**TAX MAP**  
**BOROUGH OF HIGHTSTOWN**  
 MERCER COUNTY, NEW JERSEY  
 SCALE: 1" = 100' OCTOBER 1965  
**VAN NOTE - HARVEY ASSOCIATES**  
 CONSULTING ENGINEERS & LAND SURVEYORS  
 234 NASSAU STREET,  
 PRINCETON, NEW JERSEY

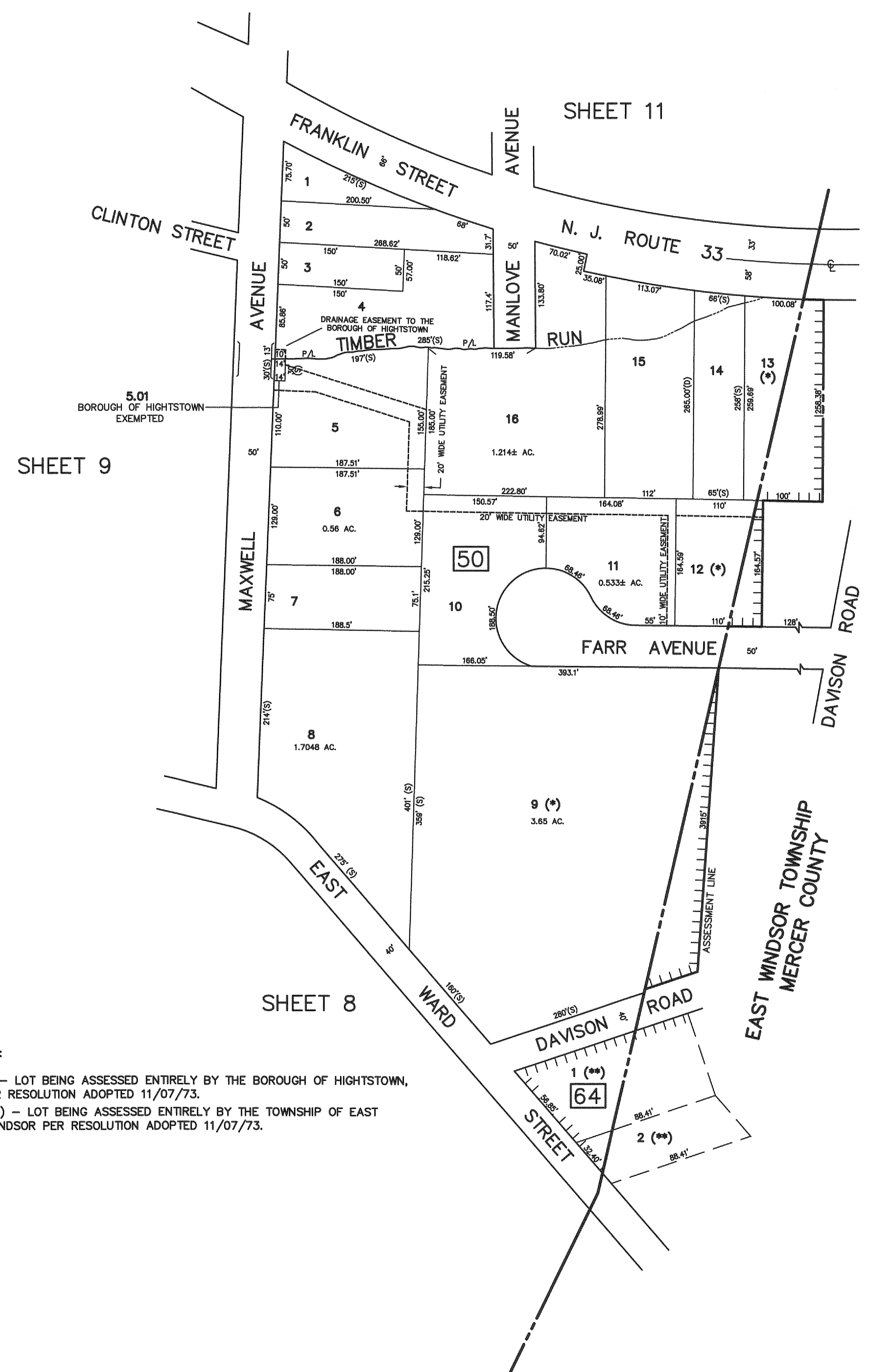


THIS MAP HAS BEEN REDRAWN USING COMPUTER AIDED DRAFTING/DESIGN (CAD/D) BASED ON THE MAP PREPARED BY J.H. DITMARS, P.L.S., DATED OCTOBER 1965, LAST REVISED BY NEIL I. VAN CLEEF, P.L.S., N.J. LIC. NO. 13856, DATED DECEMBER 1, 2004

I HEREBY CERTIFY THAT THIS MAP HAS BEEN REVISED UNDER MY IMMEDIATE SUPERVISION AND COMPLIES WITH THE LAWS OF THE STATE OF NEW JERSEY

*Frederick A. Crucili* 1/25/2011

FREDERICK A. CRUCILI  
N.J.P.E. & L.S. NO. 19093



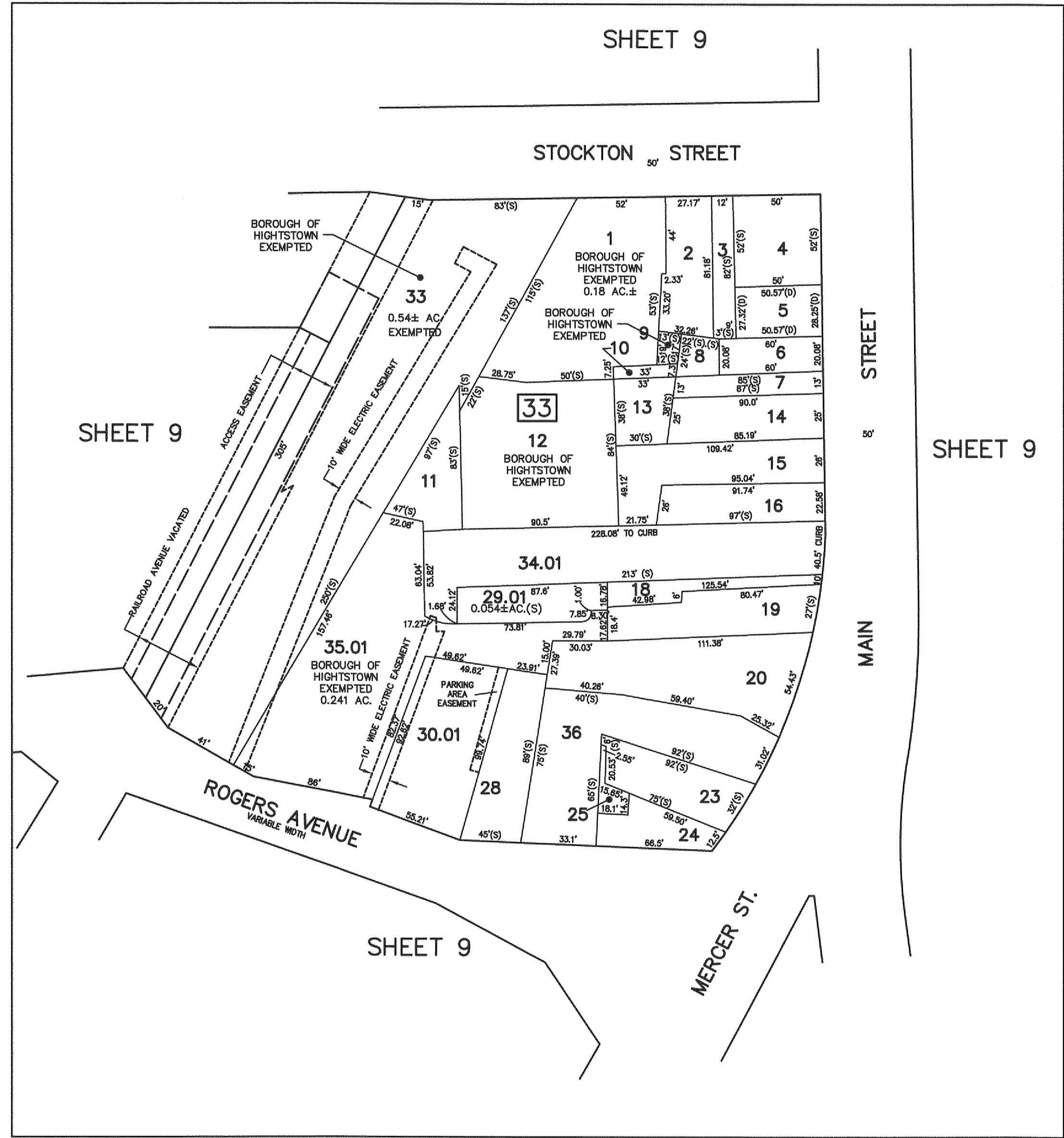
SHEET 9

SHEET 11

SHEET 8

NOTE:

(\*) - LOT BEING ASSESSED ENTIRELY BY THE BOROUGH OF HIGHTSTOWN, PER RESOLUTION ADOPTED 11/07/73.  
(\*\*) - LOT BEING ASSESSED ENTIRELY BY THE TOWNSHIP OF EAST WINDSOR PER RESOLUTION ADOPTED 11/07/73.



SHEET 9

SHEET 9

SHEET 9

DETAIL SCALE: 1"=50'

DATE	NAME	N.J. LIC. NO.
12/31/11	FREDERICK A. CRUCILI	NJPE&LS 19093
12/31/10	FREDERICK A. CRUCILI	NJPE&LS 19093
12/31/09	FREDERICK A. CRUCILI	NJPE&LS 19093
12/12/08	CHARLES E. SZOVATI	GS-35887
12/01/07	CHARLES E. SZOVATI	GS-35887
11/01/06	CHARLES E. SZOVATI	GS-35887

REVISIONS

TAX MAP  
BOROUGH OF HIGHTSTOWN  
MERCER COUNTY, NEW JERSEY  
SCALE: 1" = 100' OCTOBER 1965  
VAN NOTE - HARVEY ASSOCIATES  
CONSULTING ENGINEERS & LAND SURVEYORS  
234 NASSAU STREET,  
PRINCETON, NEW JERSEY

NEW JERSEY DEPARTMENT OF THE TREASURY  
DIVISION OF TAXATION  
PROPERTY ADMINISTRATION  
APPROVED AS A TAX MAP PURSUANT TO THE AUTHORITY OF  
N.J.S.A. 52:17-15 & 54:9D-1  
FOR THE DIRECTOR, DIVISION OF TAXATION  
*Thomas J. Hill* G.T.A.  
*Samuel C. DeDonato* G.T.A.  
SAMUEL C. DE DONATO, SUPERVISING FIELD REPRESENTATIVE  
DATE: JUN 29 2007 SERIAL NO. 911

NEW JERSEY DEPARTMENT OF THE TREASURY  
DIVISION OF TAXATION  
PUBLIC UTILITY TAX BUREAU  
APPROVED AS A TAX MAP PURSUANT TO THE  
PROVISIONS OF CHAPTER 175, LAWS OF 1913, ETC.  
FOR THE DIRECTOR, DIVISION OF TAXATION  
BY: *J.P. Dineen* STATE REPRESENTATIVE  
DATE: NOV 8 1965 SERIAL NO. 431

SHEET 12

THIS MAP HAS BEEN REDRAWN USING COMPUTER AIDED DRAFTING/DESIGN (CAD/D) BASED ON THE MAP PREPARED BY J.H. DITMARS, P.L.S., DATED OCTOBER 1965, LAST REVISED BY NEIL I. VAN CLEEF, P.L.S., N.J. LIC. NO. 13856, DATED DECEMBER 1, 2004

I HEREBY CERTIFY THAT THIS MAP HAS BEEN REVISED UNDER MY IMMEDIATE SUPERVISION AND COMPLIES WITH THE LAWS OF THE STATE OF NEW JERSEY

*Frederick A. Crucili* 1/25/2011  
**FREDERICK A. CRUCILI**  
N.J.P.E. & L.S. NO. 19093

SHEET 1

SHEET 9

BANK STREET



SHEET 9

DATE	NAME	N.J. LIC. NO.
12/31/11	FREDERICK A. CRUCILI	NJPE & LS 19093
12/31/10	FREDERICK A. CRUCILI	NJPE & LS 19093
12/31/09	FREDERICK A. CRUCILI	NJPE & LS 19093
12/12/08	CHARLES E. SZOVATI	GS-35887
12/01/07	CHARLES E. SZOVATI	GS-35887
11/01/06	CHARLES E. SZOVATI	GS-35887
DATE	NAME	N.J. LIC. NO.

REVISIONS

SHEET 10

NEW JERSEY DEPARTMENT OF THE TREASURY  
DIVISION OF TAXATION  
PROPERTY APPRAISAL  
APPROVED AS A TAX MAP PURSUANT TO THE AUTHORITY OF  
N.J.S.A. 17:27A-4.6(2)  
FOR THE DIRECTOR, DIVISION OF TAXATION  
*Thomas J. Kelly* C.T.A.  
THOMAS J. KELLY, CHIEF, LOCAL PROPERTY, FIELD ASSISTANCE  
*Santo C. DiDonato* C.T.A.  
SANTO C. DIDONATO, SUPERVISING FIELD REPRESENTATIVE  
DATE: JUN 29 2007 SERIAL NO. 911

NEW JERSEY DEPARTMENT OF THE TREASURY  
DIVISION OF TAXATION  
PUBLIC UTILITY TAX BUREAU  
APPROVED AS A TAX MAP PURSUANT TO THE  
PROVISIONS OF CHAPTER 175, LAWS OF 1913, ETC.  
FOR THE DIRECTOR, DIVISION OF TAXATION  
BY: *J.H. Ditmars*  
DATE: NOV 8 1965 SERIAL NO. 481

**TAX MAP**  
**BOROUGH OF HIGHTSTOWN**  
MERCER COUNTY, NEW JERSEY  
SCALE: 1" = 100' OCTOBER 1965  
**VAN NOTE - HARVEY ASSOCIATES**  
CONSULTING ENGINEERS & LAND SURVEYORS  
234 NASSAU STREET,  
PRINCETON, NEW JERSEY

THIS MAP HAS BEEN REDRAWN USING COMPUTER AIDED DRAFTING/DESIGN (CAD/D) BASED ON THE MAP PREPARED BY J.H. DITMARS, P.L.S., DATED OCTOBER 1965, LAST REVISED BY NEIL I. VAN CLEEF, P.L.S., N.J. LIC. NO. 13856, DATED DECEMBER 1, 2004

I HEREBY CERTIFY THAT THIS MAP HAS BEEN REVISED UNDER MY IMMEDIATE SUPERVISION AND COMPLIES WITH THE LAWS OF THE STATE OF NEW JERSEY

*Frederick A. Crucili*  
**FREDERICK A. CRUCILI**  
N.J.P.E. & L.S. NO. 19093



DATE	NAME	N.J. LIC. NO.
12/31/11	FREDERICK A. CRUCILI	NJPE&LS 19093
12/31/10	FREDERICK A. CRUCILI	NJPE&LS 19093
12/31/09	FREDERICK A. CRUCILI	NJPE&LS 19093
12/12/08	CHARLES E. SZOVATI	GS-35887
12/01/07	CHARLES E. SZOVATI	GS-35887
11/01/06	CHARLES E. SZOVATI	GS-35887

REVISIONS

**TAX MAP**  
**BOROUGH OF HIGHTSTOWN**  
 MERCER COUNTY, NEW JERSEY  
 SCALE: 1" = 100' OCTOBER 1965  
**VAN NOTE - HARVEY ASSOCIATES**  
 CONSULTING ENGINEERS & LAND SURVEYORS  
 234 NASSAU STREET,  
 PRINCETON, NEW JERSEY

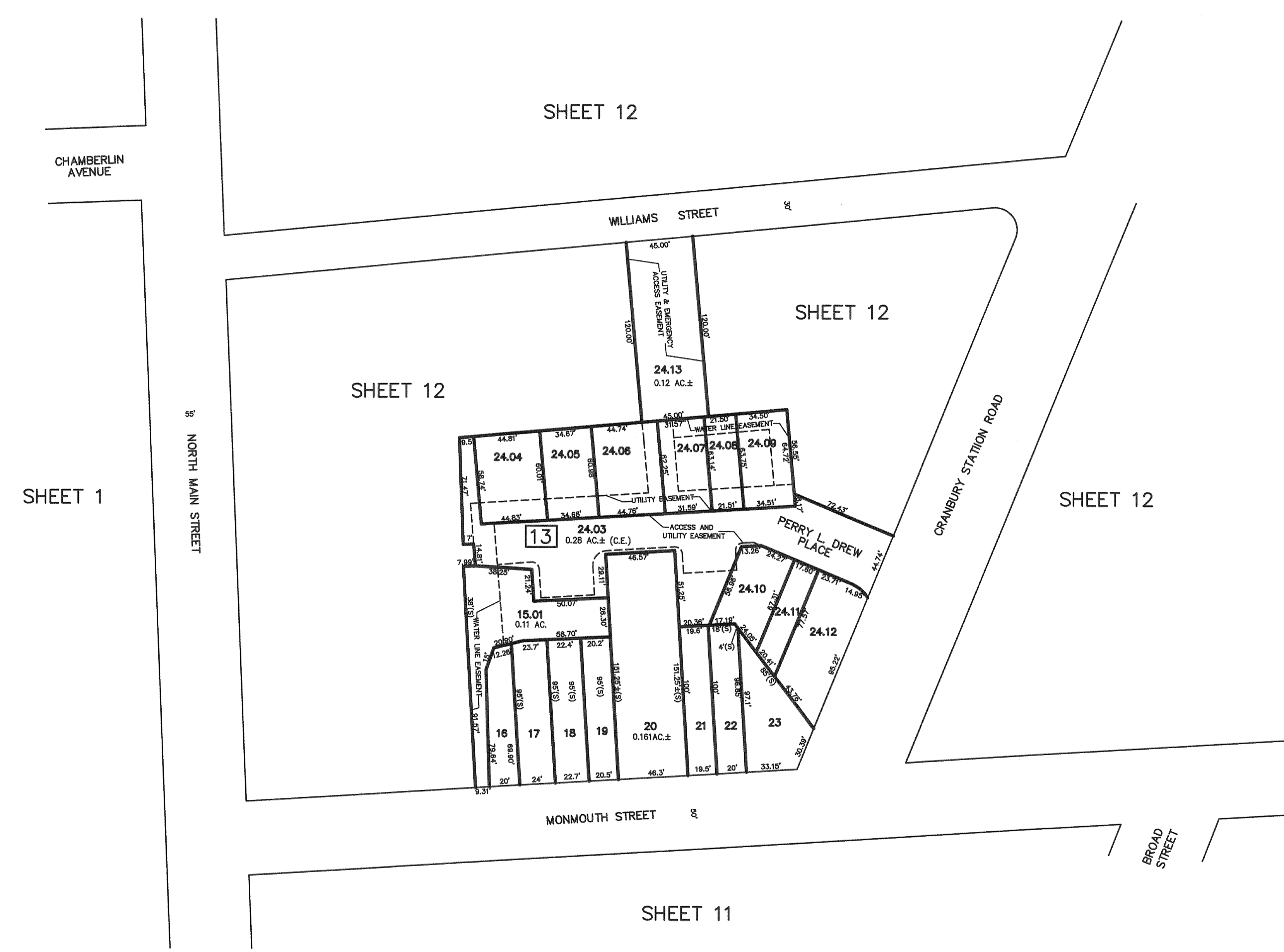
NEW JERSEY DEPARTMENT OF THE TREASURY  
 DIVISION OF TAXATION  
 PROPERTY ADMINISTRATION  
 APPROVED AS A TAX MAP PURSUANT TO THE AUTHORITY OF  
 N.J.A.C. 17:27-16 & 17-27-17  
 FOR THE DIRECTOR, DIVISION OF TAXATION  
*Santo C. DeDonato*  
 SANTO C. DE DONATO, SUPERVISOR FIELD REPRESENTATIVE  
 DATE: NOV 8 2007 SERIAL NO. 11

NEW JERSEY DEPARTMENT OF THE TREASURY  
 DIVISION OF TAXATION  
 PUBLIC UTILITY TAX BUREAU  
 APPROVED AS A TAX MAP PURSUANT TO THE  
 PROVISIONS OF CHAPTER 175, LAWS OF 1913, ETC.  
 FOR THE DIRECTOR, DIVISION OF TAXATION  
 BY: *J. P. DeMarco*  
 DATE: NOV 8 1965 SERIAL NO. 431

THIS MAP HAS BEEN REDRAWN USING COMPUTER AIDED DRAFTING/DESIGN (CAD/D) BASED ON THE MAP PREPARED BY J.H. DITMARS, P.L.S., DATED OCTOBER 1965, LAST REVISED BY NEIL I. VAN CLEEF, P.L.S., N.J. LIC. NO. 13856, DATED DECEMBER 1, 2004

I HEREBY CERTIFY THAT THIS MAP HAS BEEN REVISED UNDER MY IMMEDIATE SUPERVISION AND COMPLIES WITH THE LAWS OF THE STATE OF NEW JERSEY

*Frederick A. Crucili 1/25/2012*  
**FREDERICK A. CRUCILI**  
N.J.P.E. & L.S. NO. 19093



12/31/11	FREDERICK A. CRUCILI	NJPE&LS 19093
12/31/10	FREDERICK A. CRUCILI	NJPE&LS 19093
12/31/09	FREDERICK A. CRUCILI	NJPE&LS 19093
12/12/08	CHARLES E. SZOVATI	GS-35887
12/01/07	CHARLES E. SZOVATI	GS-35887
11/01/06	CHARLES E. SZOVATI	GS-35887
DATE	NAME	N.J. LIC. NO.

REVISIONS

**TAX MAP**  
**BOROUGH OF HIGHTSTOWN**  
MERCER COUNTY, NEW JERSEY  
SCALE: 1" = 50' OCTOBER 1965  
**VAN NOTE - HARVEY ASSOCIATES**  
CONSULTING ENGINEERS & LAND SURVEYORS  
234 NASSAU STREET,  
PRINCETON, NEW JERSEY

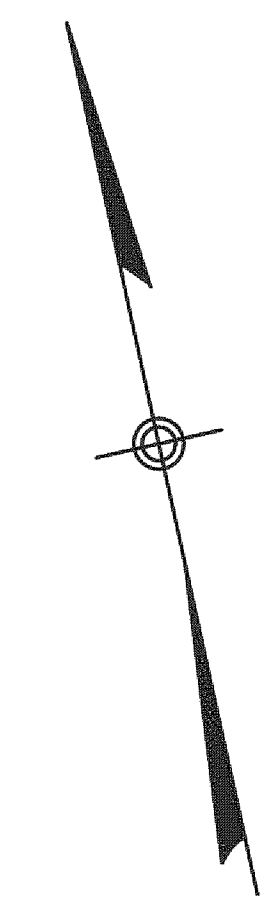
NEW JERSEY DEPARTMENT OF THE TREASURY  
DIVISION OF TAXATION  
PROPERTY ADMINISTRATION  
APPROVED AS A TAX MAP PURSUANT TO THE AUTHORITY OF  
N.J.S.A. 86:118 & 86:14  
FOR THE DIRECTOR, DIVISION OF TAXATION  
*[Signature]* G.T.A.  
THOMAS E. HELLER, CHIEF, LOCAL PROPERTY, FIELD ASSISTANCE  
*[Signature]* G.T.A.  
SANTO C. DI DONATO, SUPERVISING FIELD REPRESENTATIVE  
DATE: JUN 9 9 2007 SERIAL NO. 11

NEW JERSEY DEPARTMENT OF THE TREASURY  
DIVISION OF TAXATION  
PUBLIC UTILITY TAX BUREAU  
APPROVED AS A TAX MAP PURSUANT TO THE  
PROVISIONS OF CHAPTER 175, LAWS OF 1913, ETC.  
FOR THE DIRECTOR, DIVISION OF TAXATION  
*[Signature]*  
DATE: NOV 8 1965 SERIAL NO. 431

THIS MAP HAS BEEN REDRAWN USING COMPUTER AIDED DRAFTING/DESIGN (CAD/D) BASED ON THE MAP PREPARED BY J. H. DITMARO, P.L.S., DATED OCTOBER 1965, LAST REVISED BY NEIL I. VAN CLEEF, P.E. & P.L.S., N.J. LIC. NO. 13856, DATED DECEMBER 1, 2004.

I HEREBY CERTIFY THAT THIS MAP HAS BEEN REVISED UNDER MY IMMEDIATE SUPERVISION AND COMPLIES WITH THE LAWS OF THE STATE OF NEW JERSEY

*Frederick A. Crucili 1/25/2012*  
**FREDERICK A. CRUCILI**  
N.J.P.E. & L.S. NO. 19093



EAST WINDSOR TOWNSHIP  
MERCER COUNTY

EAST WINDSOR TOWNSHIP  
MERCER COUNTY

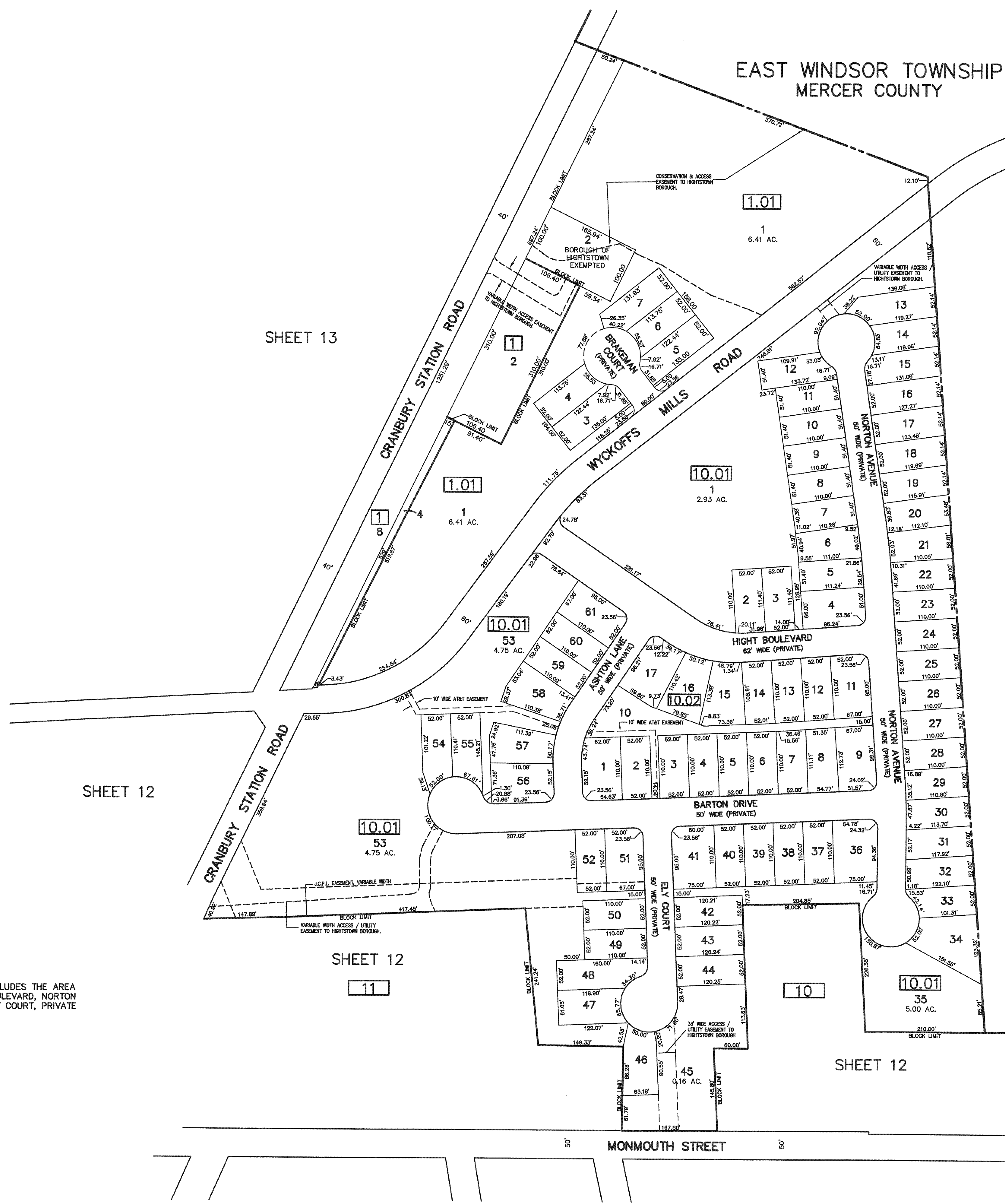
SHEET 13

SHEET 12

SHEET 12

SHEET 12

NOTE: BLOCK 10.01, LOT 53, INCLUDES THE AREA WITHIN ASHTON LANE, HIGHT BOULEVARD, NORTON AVENUE, BARTON DRIVE AND ELY COURT, PRIVATE ROADS.



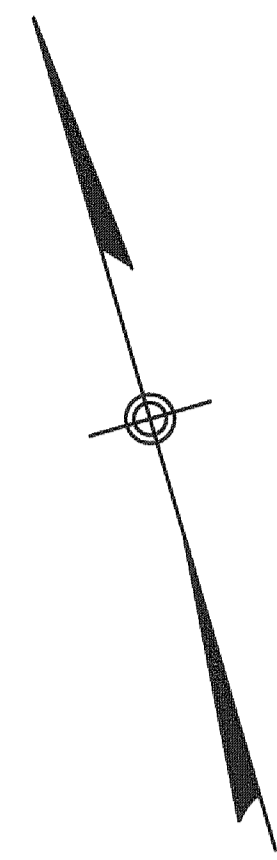
NEW JERSEY DEPARTMENT OF THE TREASURY  
DIVISION OF TAXATION  
PROPERTY ADMINISTRATION  
APPROVED AS A TAX MAP PURSUANT TO THE AUTHORITY OF N.J.S.A. 61-18 & 61-19  
FOR THE DIRECTOR, DIVISION OF TAXATION  
*[Signature]* G.T.A.  
THOMAS J. REILLY, CHIEF, LOCAL PROPERTY FIELD ASSISTANCE  
*[Signature]* G.T.A.  
BARTO C. DIORATO, SUPERVISING FIELD REPRESENTATIVE  
DATE: JUN 9 2006 SERIAL NO. 911

NEW JERSEY DEPARTMENT OF THE TREASURY  
DIVISION OF TAXATION  
PUBLIC UTILITY TAX BUREAU  
APPROVED AS A TAX MAP PURSUANT TO THE PROVISIONS OF CHAPTER 175, LAWS OF 1913, ETC.  
FOR THE DIRECTOR, DIVISION OF TAXATION  
BY: *[Signature]* STATE  
DATE: NOV 8 1965 SERIAL NO. 487

DATE	NAME	N.J. LIC. NO.
12/31/11	FREDERICK A. CRUCILI	NJPE&LS 19093
12/31/10	FREDERICK A. CRUCILI	NJPE&LS 19093
12/31/09	FREDERICK A. CRUCILI	NJPE&LS 19093
12/12/08	CHARLES E. SZOVATI	GS-35887
12/01/07	CHARLES E. SZOVATI	GS-35887
11/01/06	CHARLES E. SZOVATI	GS-35887

REVISIONS

**TAX MAP**  
**BOROUGH OF HIGHTSTOWN**  
MERCER COUNTY, NEW JERSEY  
SCALE: 1" = 100' OCTOBER 1965  
**VAN NOTE - HARVEY ASSOCIATES**  
CONSULTING ENGINEERS & LAND SURVEYORS  
234 NASSAU STREET,  
PRINCETON, NEW JERSEY



THIS MAP HAS BEEN REDRAWN USING COMPUTER AIDED DRAFTING/DESIGN (CAD/D) BASED ON THE MAP PREPARED BY J.H. DITMARS, P.L.S., DATED OCTOBER 1965, LAST REVISED BY NEIL I. VAN CLEEF, P.L.S., N.J. LIC. NO. 13856, DATED DECEMBER 1, 2004

I HEREBY CERTIFY THAT THIS MAP HAS BEEN REVISED UNDER MY IMMEDIATE SUPERVISION AND COMPLIES WITH THE LAWS OF THE STATE OF NEW JERSEY

*Frederick A. Crucili* 1/25/2012  
**FREDERICK A. CRUCILI**  
N.J.P.E. & L.S. NO. 19093



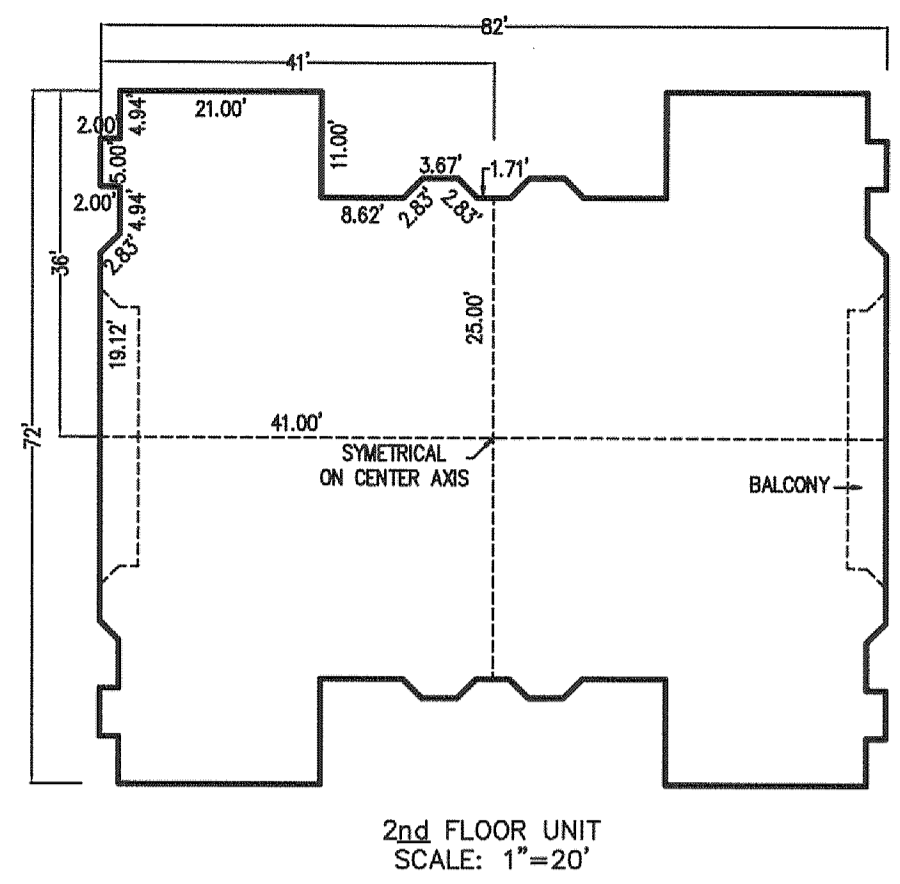
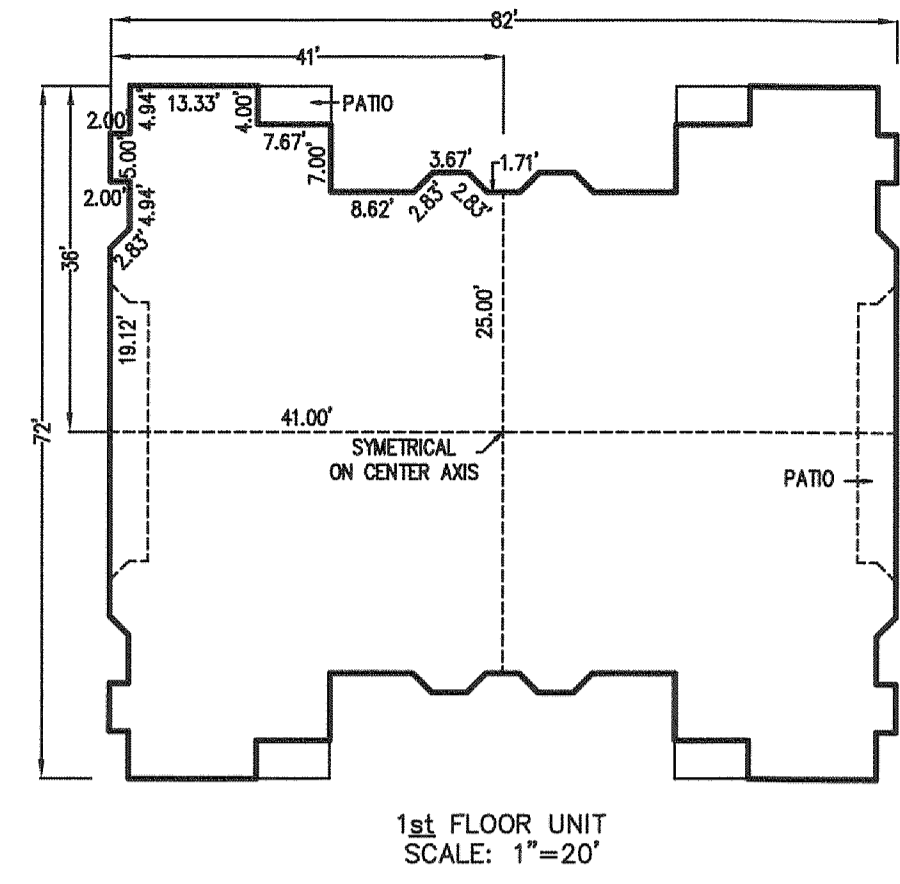
DATE	NAME	N.J. LIC. NO.
12/31/11	FREDERICK A. CRUCILI	NJPE&LS 19093
12/31/10	FREDERICK A. CRUCILI	NJPE&LS 19093
12/31/09	FREDERICK A. CRUCILI	NJPE&LS 19093
12/12/08	CHARLES E. SZOVATI	GS-35887
12/01/07	CHARLES E. SZOVATI	GS-35887
11/01/06	CHARLES E. SZOVATI	GS-35887

REVISIONS

**TAX MAP**  
**BOROUGH OF HIGHTSTOWN**  
MERCER COUNTY, NEW JERSEY  
SCALE: 1" = 100' OCTOBER 1965  
**VAN NOTE - HARVEY ASSOCIATES**  
CONSULTING ENGINEERS & LAND SURVEYORS  
234 NASSAU STREET,  
PRINCETON, NEW JERSEY

NEW JERSEY DEPARTMENT OF THE TREASURY  
DIVISION OF TAXATION  
PROPERTY ADMINISTRATION  
APPROVED AS A TAX MAP PURSUANT TO THE AUTHORITY OF  
N.J.S.A. 961-18 & 96B-4  
FOR THE DIRECTOR, DIVISION OF TAXATION  
*[Signature]* G.T.A.  
THO. AS F. HELL, CHIEF, LOCAL GOVERNMENT, FIELD ASSISTANCE  
*[Signature]* G.T.A.  
DATE: JUN 8 2007 SERIAL NO. 911

NEW JERSEY DEPARTMENT OF THE TREASURY  
DIVISION OF TAXATION  
PUBLIC UTILITY TAX BUREAU  
APPROVED AS A TAX MAP PURSUANT TO THE  
PROVISIONS OF CHAPTER 175, LAWS OF 1913, ETC.  
FOR THE DIRECTOR, DIVISION OF TAXATION  
BY: *[Signature]*  
DATE: NOV 8 1965 STATE SERIAL NO. 431



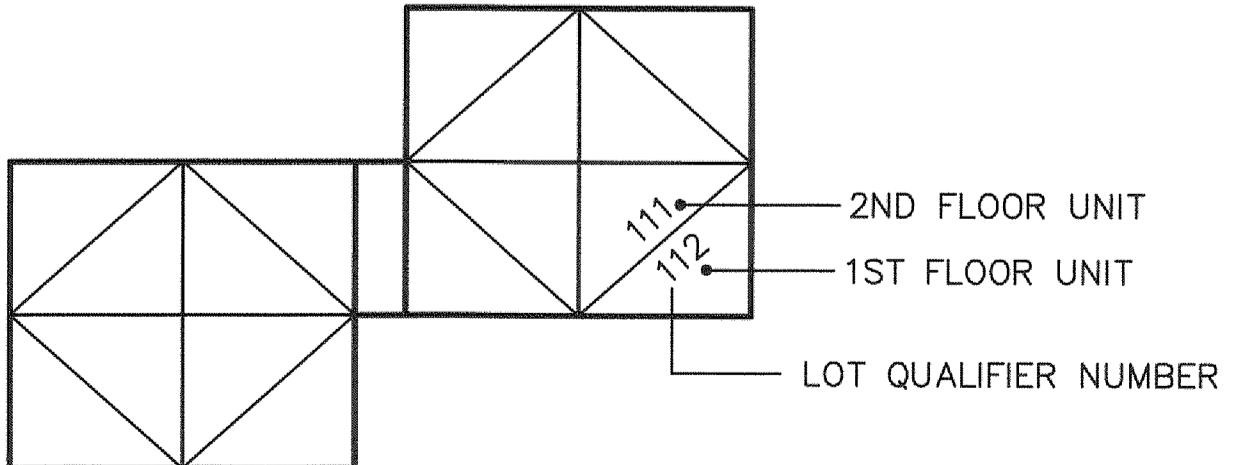
TYPICAL UNIT DIMENSIONS

SHEET 13

THIS MAP HAS BEEN REDRAWN USING COMPUTER AIDED DRAFTING/DESIGN (CAD/D) BASED ON THE MAP PREPARED BY J.H. DITMARS, P.L.S., DATED OCTOBER 1965, LAST REVISED BY NEIL I. VAN CLEEF, P.L.S., N.J. LIC. NO. 13856, DATED DECEMBER 1, 2004

I HEREBY CERTIFY THAT THIS MAP HAS BEEN REVISED UNDER MY IMMEDIATE SUPERVISION AND COMPLIES WITH THE LAWS OF THE STATE OF NEW JERSEY

*Frederick A. Crucili* 1/25/2012  
**FREDERICK A. CRUCILI**  
 N.J.P.E. & L.S. NO. 19093



SHEET 12

SHEET 13.02

NEW JERSEY DEPARTMENT OF THE TREASURY  
 DIVISION OF TAXATION  
 PROPERTY REPRESENTATIVE  
 APPROVED AS A TAX MAP PURSUANT TO THE AUTHORITY OF N.J.A.C. 17:27 & 17:28-1  
 FOR THE DIRECTOR, DIVISION OF TAXATION  
*Thomas C. DeCicco* G.T.A.  
 THOMAS C. DECICCO, SUPERVISOR, FIELD REPRESENTATIVE  
 DATE: JUN 29 2011 SERIAL NO. 011

REVISIONS		
DATE	NAME	N.J. LIC. NO.
12/31/11	FREDERICK A. CRUCILI	NJPE&LS 19093
12/31/10	FREDERICK A. CRUCILI	NJPE&LS 19093
12/31/09	FREDERICK A. CRUCILI	NJPE&LS 19093
12/12/08	CHARLES E. SZOVATI	GS-35887
12/01/07	CHARLES E. SZOVATI	GS-35887
11/01/06	CHARLES E. SZOVATI	GS-35887

NEW JERSEY DEPARTMENT OF THE TREASURY  
 DIVISION OF TAXATION  
 PUBLIC UTILITY TAX BUREAU  
 APPROVED AS A TAX MAP PURSUANT TO THE PROVISIONS OF CHAPTER 175, LAWS OF 1913, ETC.  
 FOR THE DIRECTOR, DIVISION OF TAXATION  
 BY: *J.P. Deane* STATE  
 DATE: NOV 8 1965 SERIAL NO. 431

**TAX MAP**  
**BOROUGH OF HIGHTSTOWN**  
 MERCER COUNTY, NEW JERSEY  
 SCALE: 1" = 50' OCTOBER 1965  
**VAN NOTE - HARVEY ASSOCIATES**  
 CONSULTING ENGINEERS & LAND SURVEYORS  
 234 NASSAU STREET,  
 PRINCETON, NEW JERSEY

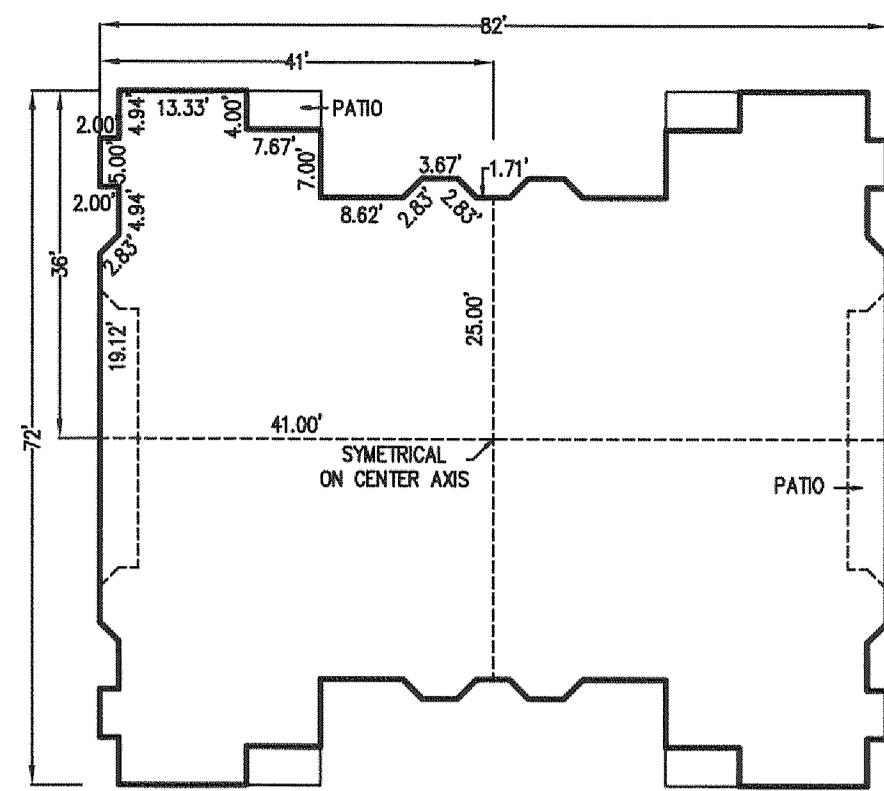
REVISIONS		
DATE	NAME	N.J. LIC. NO.
11/01/06	CHARLES E. SZOVATI	GS-35887
12/01/07	CHARLES E. SZOVATI	GS-35887
12/12/08	CHARLES E. SZOVATI	GS-35887
12/31/09	FREDERICK A. CRUCILI	NJPE&LS 19093
12/31/10	FREDERICK A. CRUCILI	NJPE&LS 19093
12/31/11	FREDERICK A. CRUCILI	NJPE&LS 19093

THIS MAP HAS BEEN REDRAWN USING COMPUTER AIDED DRAFTING/DESIGN (CAD) BASED ON THE MAP PREPARED BY J.H. DITMARS, P.L.S., DATED OCTOBER 1965, LAST REVISED BY NEIL I. VAN CLEEF, P.L.S., N.J. LIC. NO. 13856, DATED DECEMBER 1, 2004.

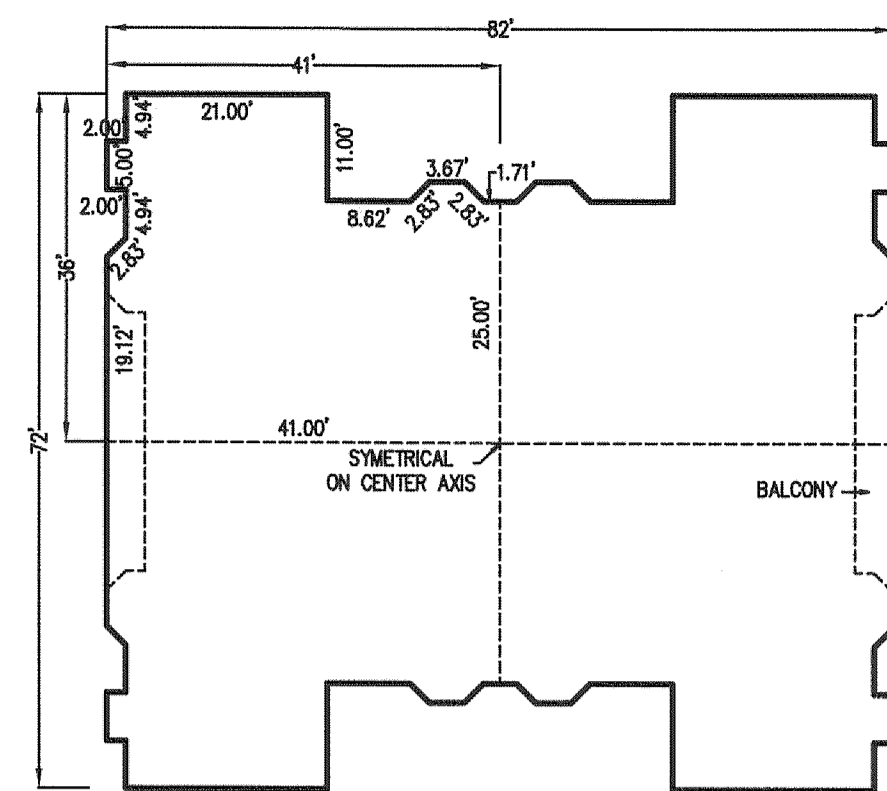
I HEREBY CERTIFY THAT THIS MAP HAS BEEN REVISED UNDER MY IMMEDIATE SUPERVISION AND COMPLIES WITH THE LAWS OF THE STATE OF NEW JERSEY

*Frederick A. Crucili* 1/25/2012

**FREDERICK A. CRUCILI**  
N.J.P.E. & L.S. NO. 19093

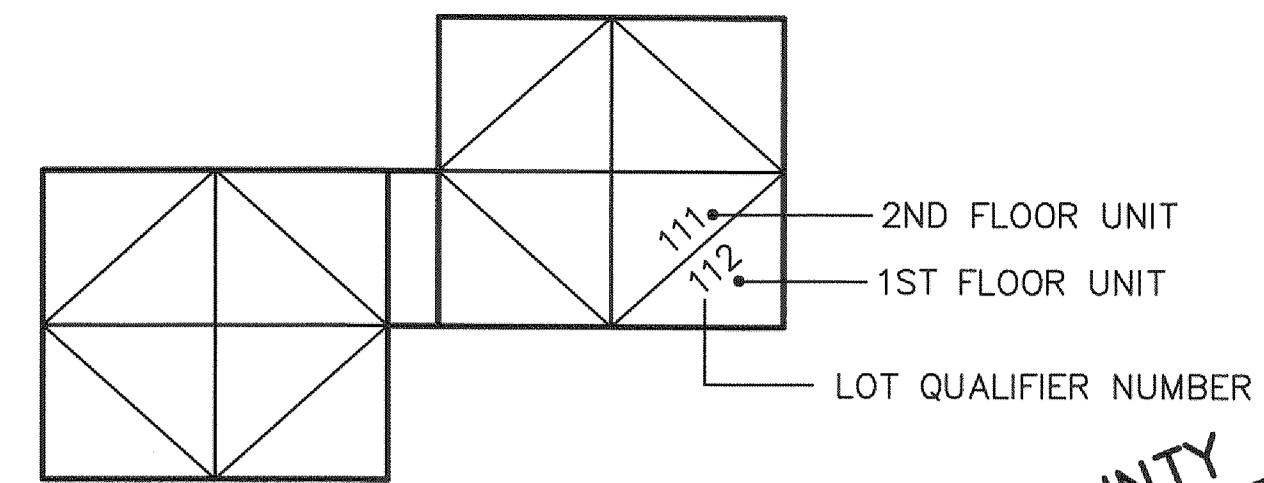


1st FLOOR UNIT  
SCALE: 1"=20'

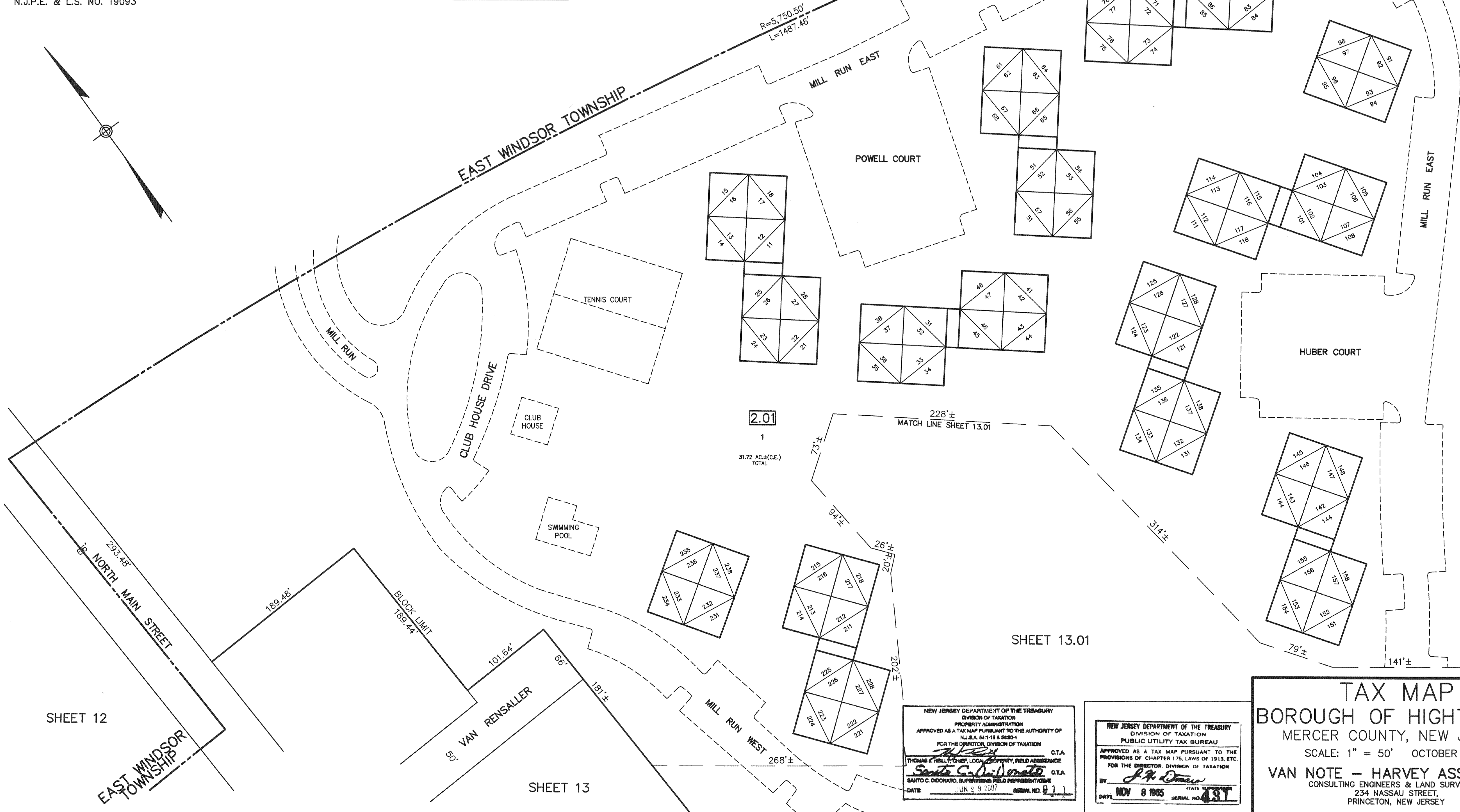
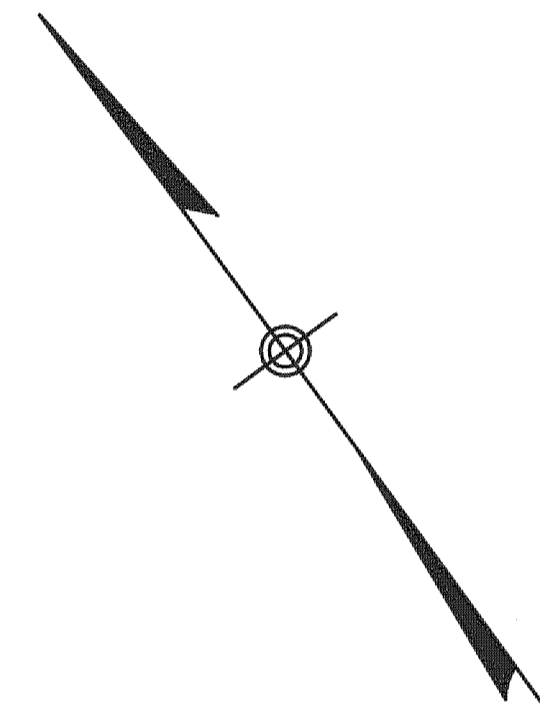


2nd FLOOR UNIT  
SCALE: 1"=20'

TYPICAL UNIT DIMENSIONS



2ND FLOOR UNIT  
1ST FLOOR UNIT  
LOT QUALIFIER NUMBER



SHEET 12

SHEET 13

SHEET 13.01

NEW JERSEY DEPARTMENT OF THE TREASURY  
DIVISION OF TAXATION  
PROPERTY ADMINISTRATION  
APPROVED AS A TAX MAP PURSUANT TO THE AUTHORITY OF  
N.J.S.A. 54:18 & 54:20-1  
FOR THE DIRECTOR, DIVISION OF TAXATION  
*Thomas C. DiDonato* G.T.A.  
THOMAS C. DIDONATO, SUPERVISING FIELD REPRESENTATIVE  
DATE JUN 29 2007 SERIAL NO. 9

NEW JERSEY DEPARTMENT OF THE TREASURY  
DIVISION OF TAXATION  
PUBLIC UTILITY TAX BUREAU  
APPROVED AS A TAX MAP PURSUANT TO THE  
PROVISIONS OF CHAPTER 175, LAWS OF 1913, ETC.  
FOR THE DIRECTOR, DIVISION OF TAXATION  
*J. A. DiDonato* G.T.A.  
DATE NOV 8 1965 SERIAL NO. 431

**TAX MAP**  
**BOROUGH OF HIGHTSTOWN**  
MERCER COUNTY, NEW JERSEY  
SCALE: 1" = 50' OCTOBER 1965  
**VAN NOTE - HARVEY ASSOCIATES**  
CONSULTING ENGINEERS & LAND SURVEYORS  
234 NASSAU STREET,  
PRINCETON, NEW JERSEY