

TAX MAPS

**BOROUGH OF
HIGHTSTOWN**

Mercer County, New Jersey

| REVISIONS | | |
|-----------|----------------------|---------------|
| DATE | NAME | N.J. LIC. NO. |
| 11/01/06 | CHARLES E. SZOVATI | GS-35887 |
| 12/01/07 | CHARLES E. SZOVATI | GS-35887 |
| 12/12/08 | CHARLES E. SZOVATI | GS-35887 |
| 12/31/09 | FREDERICK A. CRUCILI | NJPE&LS 19093 |
| 12/31/10 | FREDERICK A. CRUCILI | NJPE&LS 19093 |
| 12/31/11 | FREDERICK A. CRUCILI | NJPE&LS 19093 |
| 12/31/13 | FREDERICK A. CRUCILI | NJPE&LS 19093 |

EAST WINDSOR TOWNSHIP MERCER COUNTY

EAST WINDSOR TOWNSHIP
MERCER COUNTY

EAST WINDSOR TOWNSHIP
MERCER COUNTY

EAST WINDSOR TOWNSHIP
MERCER COUNTY

LEGEND:

① SHEET NUMBER

② BLOCK NUMBER

NOTES:

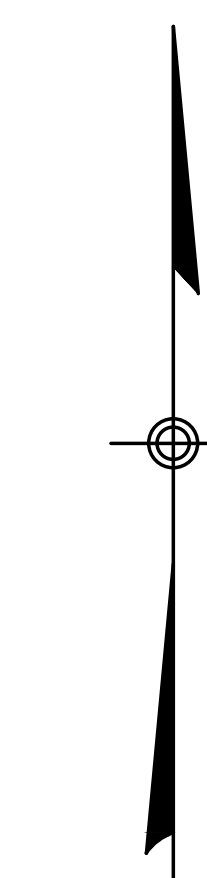
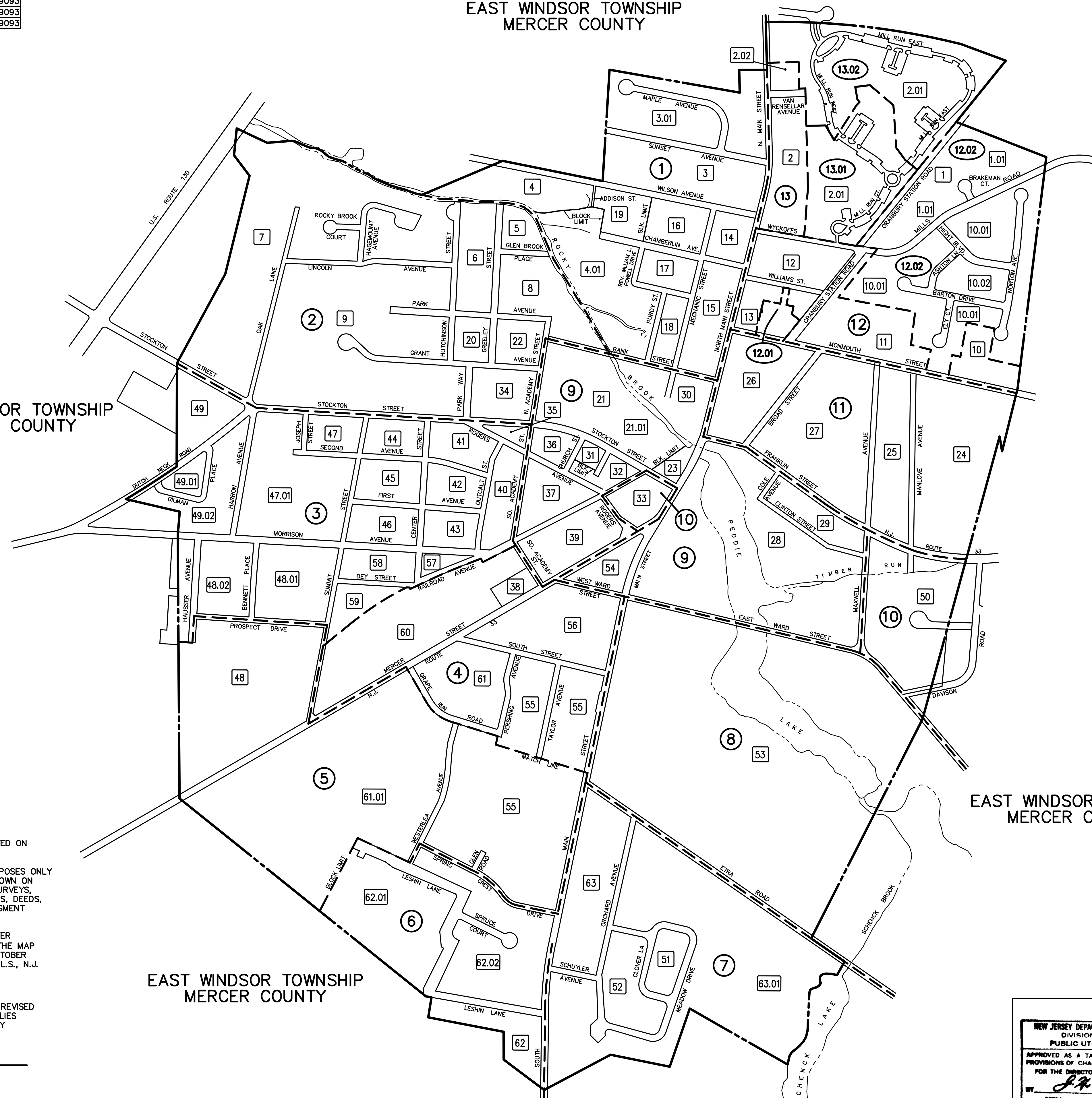
THIS MAP SUPERCEDES THE TAX MAP APPROVED ON NOVEMBER 8, 1965, SERIAL NO. 431.

THIS MAP TO BE USED FOR ASSESSMENT PURPOSES ONLY THE AREAS, BOUNDARIES AND DIMENSIONS SHOWN ON THIS TAX MAP ARE DERIVED FROM GROUND SURVEYS, AERIAL SURVEYS, AND RECORDED PLANS, MAPS, DEEDS, AND WILLS AND ARE TO BE USED FOR ASSESSMENT PURPOSES ONLY.

THIS MAP HAS BEEN REDRAWN USING COMPUTER AIDED DRAFTING/DESIGN (CAD/D) BASED ON THE MAP PREPARED BY J.H. DITMARS, P.L.S., DATED OCTOBER 1965, LAST REVISED BY NEIL I. VAN CLEEF, P.L.S., N.J. LIC. NO. 13856, DATED DECEMBER 1, 2004

I HEREBY CERTIFY THAT THIS MAP HAS BEEN REVISED UNDER MY IMMEDIATE SUPERVISION AND COMPLIES WITH THE LAWS OF THE STATE OF NEW JERSEY

FREDERICK A. CRUCILI
N.J.P.E. & L.S. NO. 19093

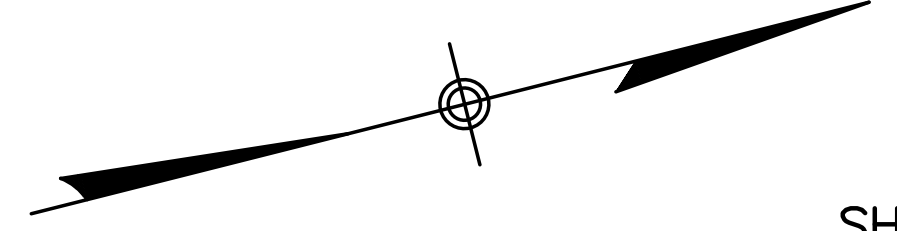


NEW JERSEY DEPARTMENT OF THE TREASURY
DIVISION OF TAXATION
PROPERTY ADMINISTRATION
APPROVED AS A TAX MAP PURSUANT TO THE AUTHORITY OF
N.J.S.A. 54:1-15 & 54:9-1
FOR THE DIRECTOR, DIVISION OF TAXATION
Thomas J. Kelly C.T.A.
THOMAS J. KELLY, CHIEF, LEGAL PROPERTY FIELD ASSISTANCE
Santo C. DiDonato C.T.A.
SANTO C. DIDONATO, SUPERVISING FIELD REPRESENTATIVE
DATE JUN 2 9 2007 SERIAL NO. 911

NEW JERSEY DEPARTMENT OF THE TREASURY
DIVISION OF TAXATION
PUBLIC UTILITY TAX BUREAU
APPROVED AS A TAX MAP PURSUANT TO THE
PROVISIONS OF CHAPTER 178, LAWS OF 1913, ETC.
FOR THE DIRECTOR, DIVISION OF TAXATION
BY *J.P. Dineen*
DATE NOV 8 1965 SERIAL NO. 431

TAX MAP
BOROUGH OF HIGHTSTOWN
MERCER COUNTY, NEW JERSEY
SCALE: 1" = 400' OCTOBER 1965
VAN NOTE - HARVEY ASSOCIATES
CONSULTING ENGINEERS & LAND SURVEYORS
234 NASSAU STREET,
PRINCETON, NEW JERSEY
TO SHOW CONDITIONS AS OF DECEMBER 31, 2011

| REVISIONS | | |
|-----------|----------------------|-----------------------|
| DATE | NAME | N.J. LIC. NO. |
| 11/01/06 | CHARLES E. SZOVATI | GS-35887 |
| 12/01/07 | CHARLES E. SZOVATI | GS-35887 |
| 12/12/08 | CHARLES E. SZOVATI | GS-35887 |
| 12/31/09 | FREDERICK A. CRUCILI | N.J.P.E. & L.S. 19093 |
| 12/31/10 | FREDERICK A. CRUCILI | N.J.P.E. & L.S. 19093 |
| 12/31/11 | FREDERICK A. CRUCILI | N.J.P.E. & L.S. 19093 |
| 12/31/13 | FREDERICK A. CRUCILI | N.J.P.E. & L.S. 19093 |



SHEET 2

SHEET 2

EAST WINDSOR TOWNSHIP
MERCER COUNTY

EAST WINDSOR TOWNSHIP
MERCER COUNTY

EAST WINDSOR TOWNSHIP
MERCER COUNTY

APPROVED AS A TAX MAP PURSUANT TO THE AUTHORITY OF N.J.S.A. 54:13 & 54:14 FOR THE DIRECTOR, DIVISION OF TAXATION
FREDERICK A. CRUCILI E.T.A.
 L.S. NO. 19093
 JUN 29 2007

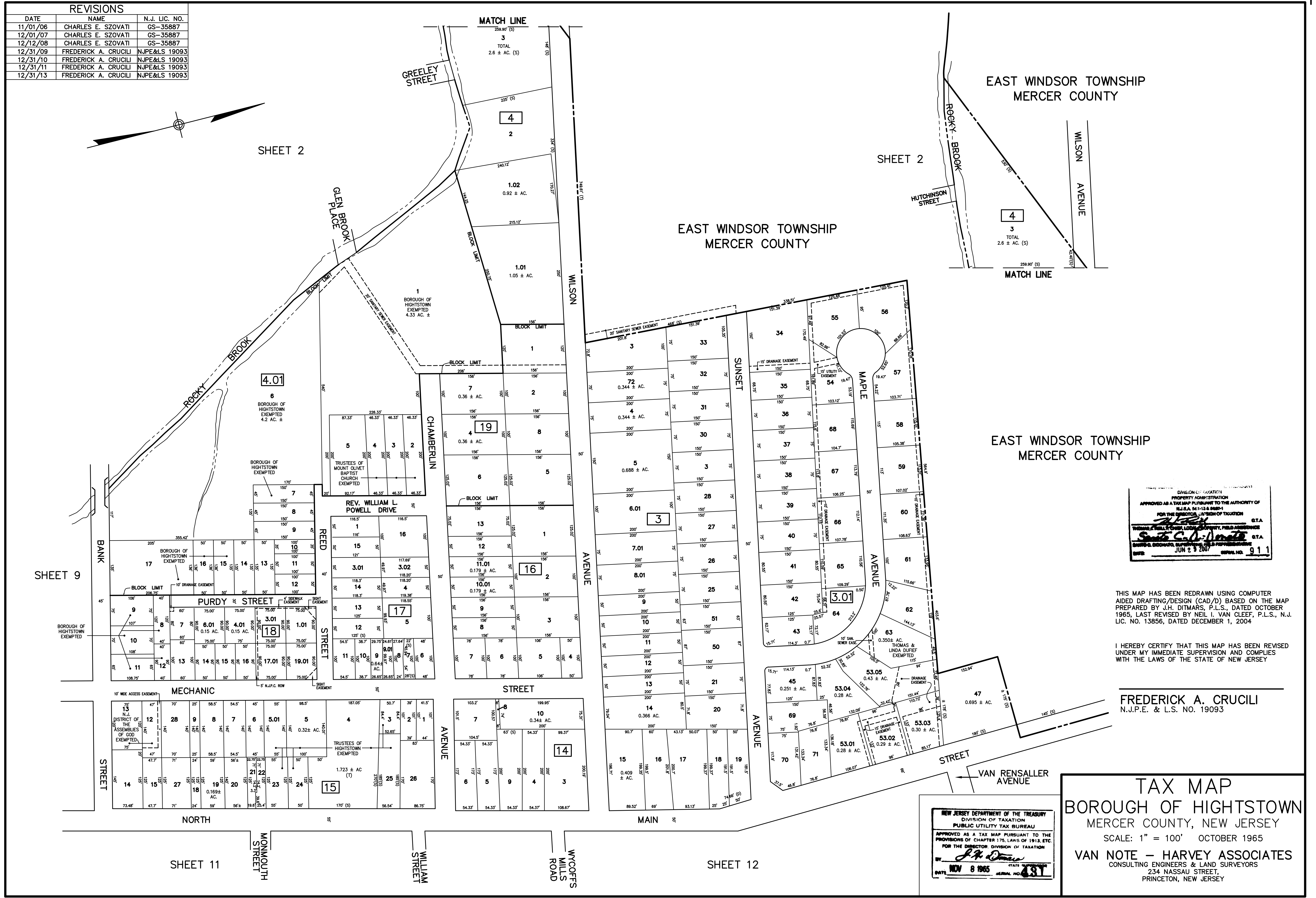
THIS MAP HAS BEEN REDRAWN USING COMPUTER AIDED DRAFTING/DESIGN (CAD/D) BASED ON THE MAP PREPARED BY J.H. DITMARS, P.L.S., DATED OCTOBER 1965, LAST REVISED BY NEIL I. VAN CLEEF, P.L.S., N.J. LIC. NO. 13856, DATED DECEMBER 1, 2004.

I HEREBY CERTIFY THAT THIS MAP HAS BEEN REVISED UNDER MY IMMEDIATE SUPERVISION AND COMPLIES WITH THE LAWS OF THE STATE OF NEW JERSEY

FREDERICK A. CRUCILI
N.J.P.E. & L.S. NO. 19093

TAX MAP
BOROUGH OF HIGHTSTOWN
 MERCER COUNTY, NEW JERSEY
 SCALE: 1" = 100' OCTOBER 1965
VAN NOTE - HARVEY ASSOCIATES
 CONSULTING ENGINEERS & LAND SURVEYORS
 234 NASSAU STREET,
 PRINCETON, NEW JERSEY

NEW JERSEY DEPARTMENT OF THE TREASURY
 DIVISION OF TAXATION
 PUBLIC UTILITY TAX BUREAU
 APPROVED AS A TAX MAP PURSUANT TO THE PROVISIONS OF CHAPTER 175, LAWS OF 1913, ETC. FOR THE DIRECTOR, DIVISION OF TAXATION
 BY *F.A. Crucili*
 DATE NOV 8 1965 SERIAL NO. 431



SHEET 9

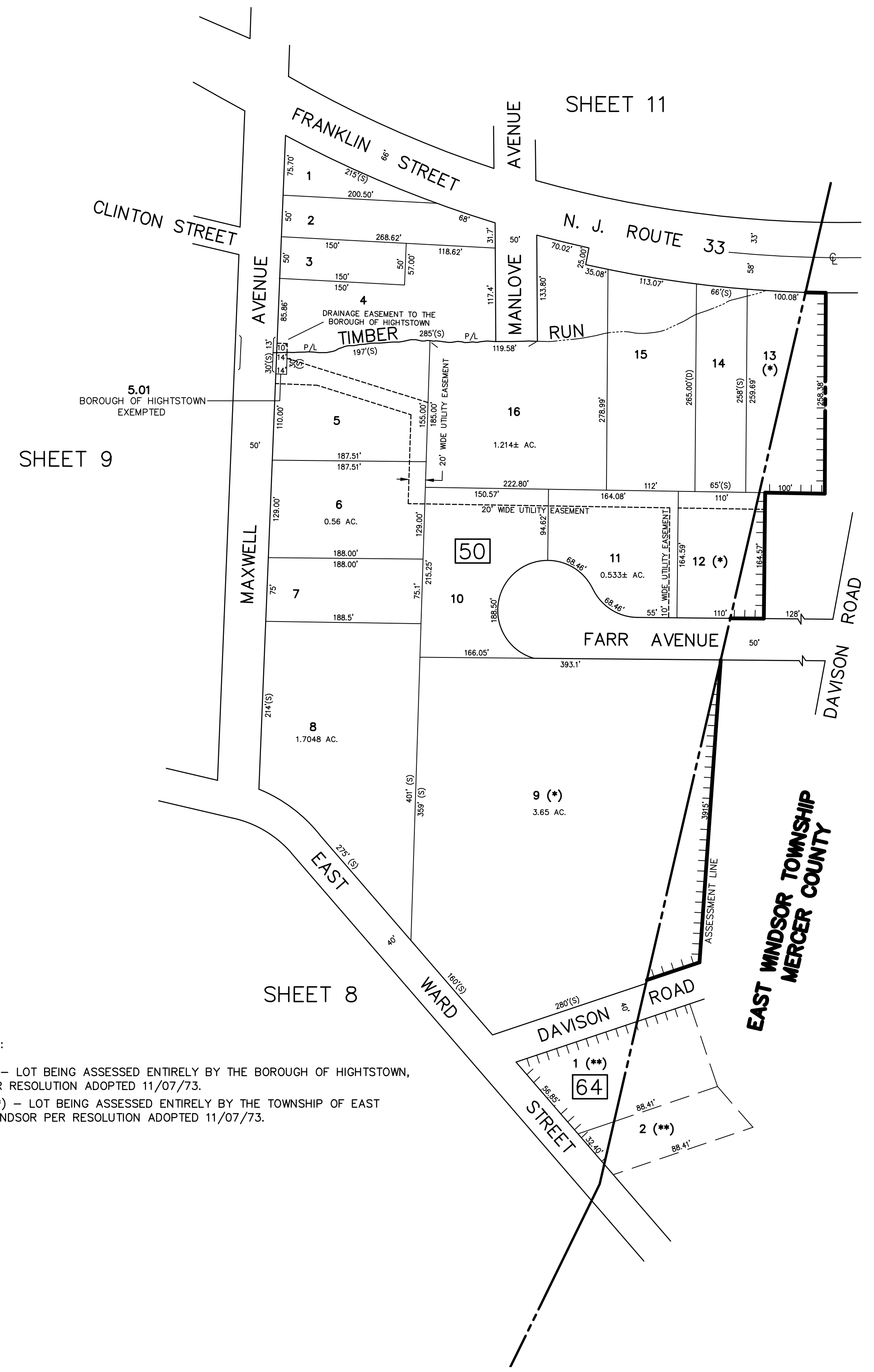
SHEET 11

SHEET 12

THIS MAP HAS BEEN REDRAWN USING COMPUTER AIDED DRAFTING/DESIGN (CAD/D) BASED ON THE MAP PREPARED BY J.H. DITMARS, P.L.S., DATED OCTOBER 1965, LAST REVISED BY NEIL I. VAN CLEEF, P.L.S., N.J. LIC. NO. 13856, DATED DECEMBER 1, 2004

I HEREBY CERTIFY THAT THIS MAP HAS BEEN REVISED UNDER MY IMMEDIATE SUPERVISION AND COMPLIES WITH THE LAWS OF THE STATE OF NEW JERSEY

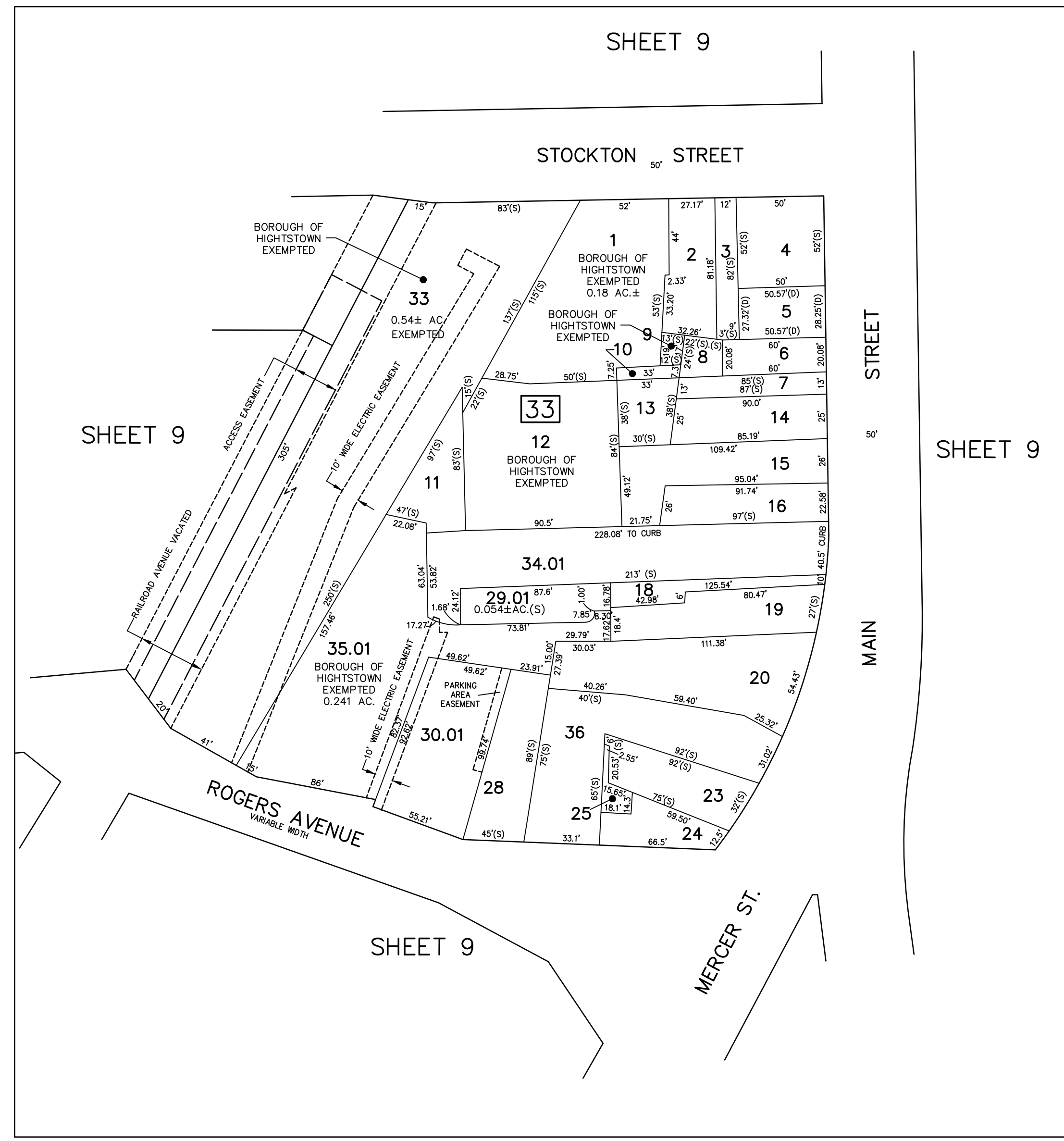
FREDERICK A. CRUCILI
N.J.P.E. & L.S. NO. 19093



NOTE:

(*) - LOT BEING ASSESSED ENTIRELY BY THE BOROUGH OF HIGHTSTOWN, PER RESOLUTION ADOPTED 11/07/73.

(**) - LOT BEING ASSESSED ENTIRELY BY THE TOWNSHIP OF EAST WINDSOR PER RESOLUTION ADOPTED 11/07/73.



DETAIL SCALE: 1"=50'

| DATE | NAME | N.J. LIC. NO. |
|----------|----------------------|---------------|
| 12/31/13 | FREDERICK A. CRUCILI | NJPE&LS 19093 |
| 12/31/11 | FREDERICK A. CRUCILI | NJPE&LS 19093 |
| 12/31/10 | FREDERICK A. CRUCILI | NJPE&LS 19093 |
| 12/31/09 | FREDERICK A. CRUCILI | NJPE&LS 19093 |
| 12/12/08 | CHARLES E. SZOVATI | GS-35887 |
| 12/01/07 | CHARLES E. SZOVATI | GS-35887 |
| 11/01/06 | CHARLES E. SZOVATI | GS-35887 |

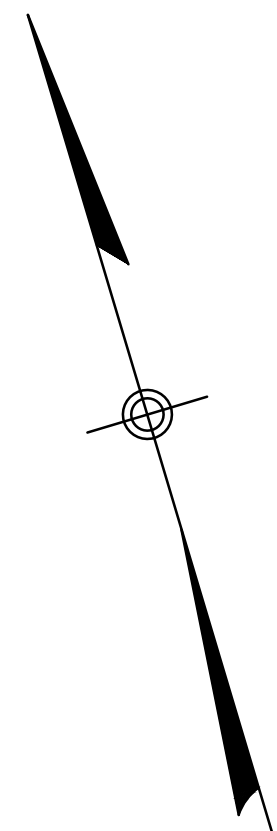
REVISIONS

NEW JERSEY DEPARTMENT OF THE TREASURY
DIVISION OF TAXATION
PROPERTY ADMINISTRATION
APPROVED AS A TAX MAP PURSUANT TO THE AUTHORITY OF
N.J.S.A. 54:1-15 & 54:15-1
FOR THE DIRECTOR, DIVISION OF TAXATION
G.T.A.
THOMAS F. HELLFINGER, LOCAL PROPERTY FIELD ASSISTANCE
G.T.A.
Santo C. DiDonato
SANTO C. DIDONATO, SUPERVISING FIELD REPRESENTATIVE
DATE: JUN 29 2007 SERIAL NO. 911

NEW JERSEY DEPARTMENT OF THE TREASURY
DIVISION OF TAXATION
PUBLIC UTILITY TAX BUREAU
APPROVED AS A TAX MAP PURSUANT TO THE
PROVISIONS OF CHAPTER 175, LAWS OF 1913, ETC.
FOR THE DIRECTOR, DIVISION OF TAXATION
G.T.A.
J.H. Ditmars
DATE: NOV 8 1965 SERIAL NO. 131

TAX MAP
BOROUGH OF HIGHTSTOWN
MERCER COUNTY, NEW JERSEY
SCALE: 1" = 100' OCTOBER 1965
VAN NOTE - HARVEY ASSOCIATES
CONSULTING ENGINEERS & LAND SURVEYORS
234 NASSAU STREET,
PRINCETON, NEW JERSEY

SHEET 12



THIS MAP HAS BEEN REDRAWN USING COMPUTER AIDED DRAFTING/DESIGN (CAD/D) BASED ON THE MAP PREPARED BY J.H. DITMARS, P.L.S., DATED OCTOBER 1965, LAST REVISED BY NEIL I. VAN CLEEF, P.L.S., N.J. LIC. NO. 13856, DATED DECEMBER 1, 2004

I HEREBY CERTIFY THAT THIS MAP HAS BEEN REVISED UNDER MY IMMEDIATE SUPERVISION AND COMPLIES WITH THE LAWS OF THE STATE OF NEW JERSEY

FREDERICK A. CRUCILI
N.J.P.E. & L.S. NO. 19093

SHEET 1

SHEET 9



SHEET 9

N. J. ROUTE 66 33

| | | |
|----------|----------------------|----------------|
| 12/31/13 | FREDERICK A. CRUCILI | NJPE& LS 19093 |
| 12/31/11 | FREDERICK A. CRUCILI | NJPE& LS 19093 |
| 12/31/10 | FREDERICK A. CRUCILI | NJPE& LS 19093 |
| 12/31/09 | FREDERICK A. CRUCILI | NJPE& LS 19093 |
| 12/12/08 | CHARLES E. SZOVATI | GS-35887 |
| 12/01/07 | CHARLES E. SZOVATI | GS-35887 |
| 11/01/06 | CHARLES E. SZOVATI | GS-35887 |
| DATE | NAME | N.J. LIC. NO. |

REVISIONS

SHEET 10

NEW JERSEY DEPARTMENT OF THE TREASURY
DIVISION OF TAXATION
PROPERTY ADMINISTRATION
APPROVED AS A TAX MAP PURSUANT TO THE AUTHORITY OF
N.J.A.C. 17:27-5A 9429-4
FOR THE DIRECTOR, DIVISION OF TAXATION
[Signature] C.T.A.
THOMAS J. HELL, CHIEF, LOCAL PROPERTY, FIELD ASSISTANCE
[Signature] C.T.A.
SANTO C. DICICCHIO, SUPERVISING FIELD REPRESENTATIVE
DATE: JUN 29 2007 SERIAL NO. 911

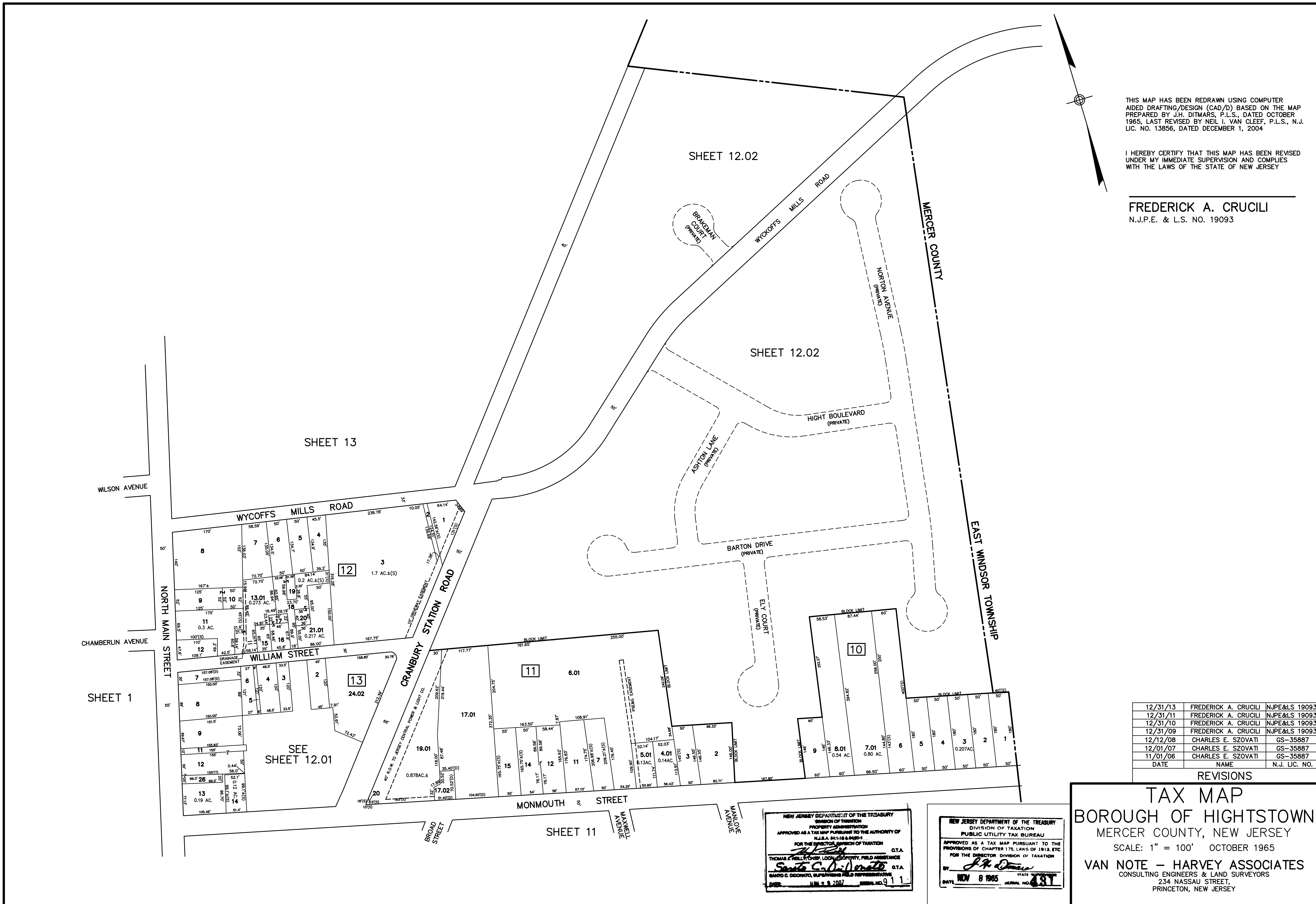
NEW JERSEY DEPARTMENT OF THE TREASURY
DIVISION OF TAXATION
PUBLIC UTILITY TAX BUREAU
APPROVED AS A TAX MAP PURSUANT TO THE
PROVISIONS OF CHAPTER 175, LAWS OF 1913, ETC.
FOR THE DIRECTOR, DIVISION OF TAXATION
BY: *[Signature]*
DATE: NOV 8 1965 SERIAL NO. 431

TAX MAP
BOROUGH OF HIGHTSTOWN
MERCER COUNTY, NEW JERSEY
SCALE: 1" = 100' OCTOBER 1965
VAN NOTE - HARVEY ASSOCIATES
CONSULTING ENGINEERS & LAND SURVEYORS
234 NASSAU STREET,
PRINCETON, NEW JERSEY

THIS MAP HAS BEEN REDRAWN USING COMPUTER AIDED DRAFTING/DESIGN (CAD/D) BASED ON THE MAP PREPARED BY J.H. DITMARS, P.L.S., DATED OCTOBER 1965, LAST REVISED BY NEIL I. VAN CLEEF, P.L.S., N.J. LIC. NO. 13856, DATED DECEMBER 1, 2004

I HEREBY CERTIFY THAT THIS MAP HAS BEEN REVISED UNDER MY IMMEDIATE SUPERVISION AND COMPLIES WITH THE LAWS OF THE STATE OF NEW JERSEY

FREDERICK A. CRUCILI
N.J.P.E. & L.S. NO. 19093



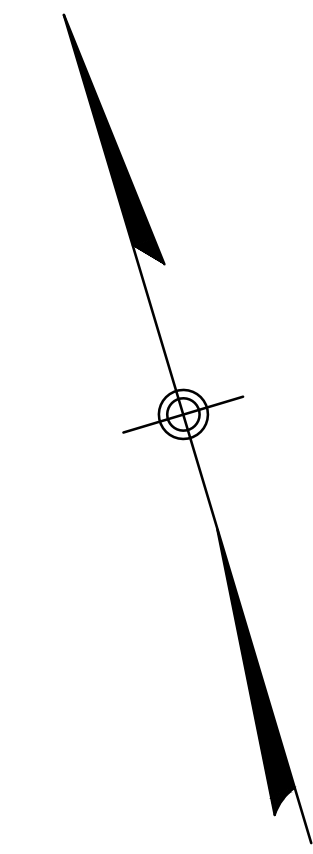
| DATE | NAME | N.J. LIC. NO. |
|----------|----------------------|---------------|
| 12/31/13 | FREDERICK A. CRUCILI | NJPE&LS 19093 |
| 12/31/11 | FREDERICK A. CRUCILI | NJPE&LS 19093 |
| 12/31/10 | FREDERICK A. CRUCILI | NJPE&LS 19093 |
| 12/31/09 | FREDERICK A. CRUCILI | NJPE&LS 19093 |
| 12/12/08 | CHARLES E. SZOVATI | GS-35887 |
| 12/01/07 | CHARLES E. SZOVATI | GS-35887 |
| 11/01/06 | CHARLES E. SZOVATI | GS-35887 |

REVISIONS

TAX MAP
BOROUGH OF HIGHTSTOWN
 MERCER COUNTY, NEW JERSEY
 SCALE: 1" = 100' OCTOBER 1965
VAN NOTE - HARVEY ASSOCIATES
 CONSULTING ENGINEERS & LAND SURVEYORS
 234 NASSAU STREET,
 PRINCETON, NEW JERSEY

NEW JERSEY DEPARTMENT OF THE TREASURY
 DIVISION OF TAXATION
 PROPERTY ADMINISTRATION
 APPROVED AS A TAX MAP PURSUANT TO THE AUTHORITY OF
 N.J.S.A. 84:1-18 & 84:2-1
 FOR THE DIRECTOR, DIVISION OF TAXATION
Thomas J. Kelly C.T.A.
 THOMAS J. KELLY, CHIEF, LOCAL PROPERTY, FIELD ASSISTANCE
Santo C. DiDonato C.T.A.
 SANTO C. DIDONATO, SUPERVISOR, FIELD REPRESENTATIVE
 DATE: JUN 5 9 2007 SERIAL NO. 9 1

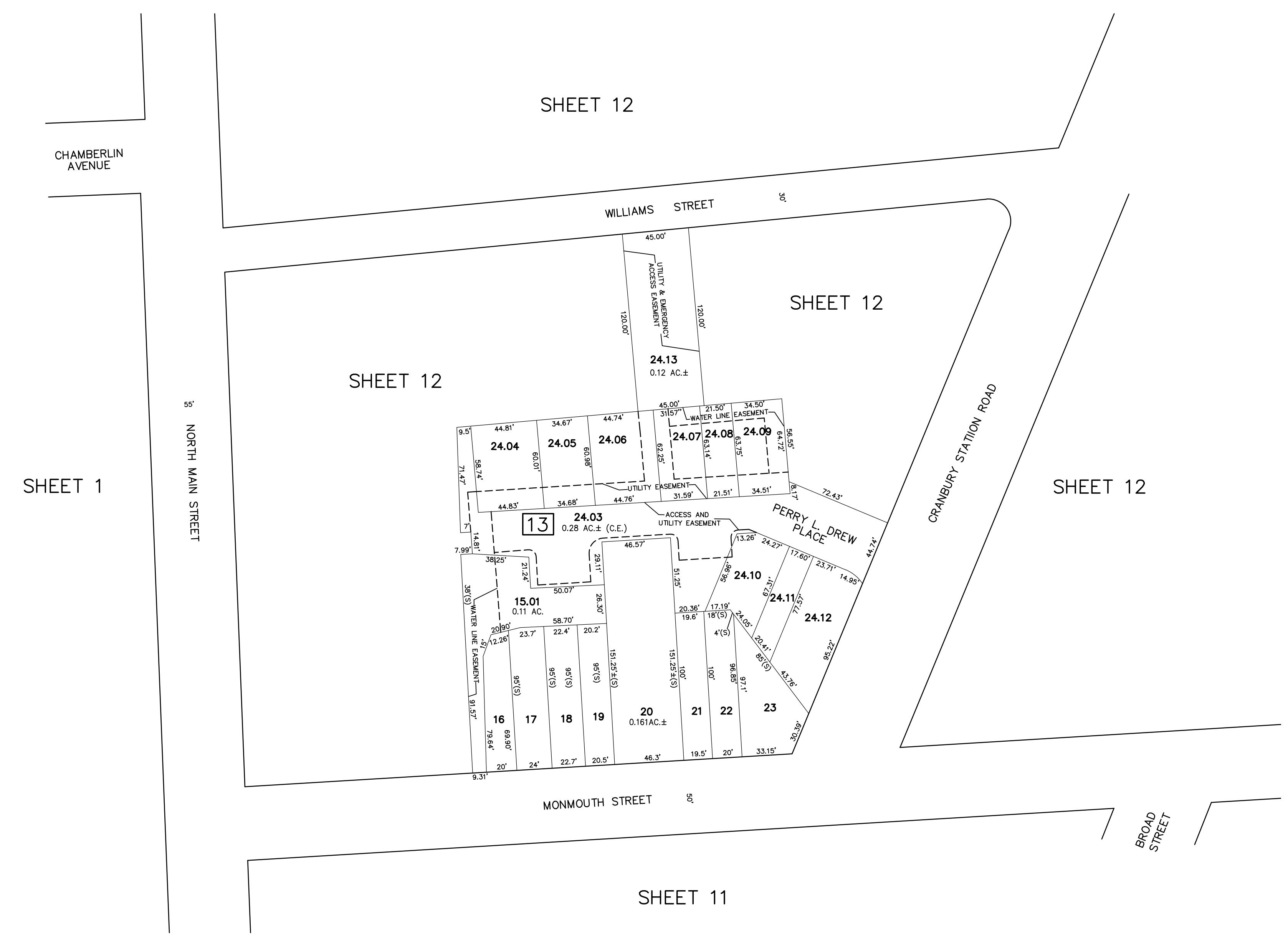
NEW JERSEY DEPARTMENT OF THE TREASURY
 DIVISION OF TAXATION
 PUBLIC UTILITY TAX BUREAU
 APPROVED AS A TAX MAP PURSUANT TO THE
 PROVISIONS OF CHAPTER 175, LAWS OF 1918, ETC.
 FOR THE DIRECTOR, DIVISION OF TAXATION
J.H. Ditmars
 DATE: NOV 8 1965 SERIAL NO. 437



THIS MAP HAS BEEN REDRAWN USING COMPUTER AIDED DRAFTING/DESIGN (CAD/D) BASED ON THE MAP PREPARED BY J.H. DITMARS, P.L.S., DATED OCTOBER 1965, LAST REVISED BY NEIL I. VAN CLEEF, P.L.S., N.J. LIC. NO. 13856, DATED DECEMBER 1, 2004

I HEREBY CERTIFY THAT THIS MAP HAS BEEN REVISED UNDER MY IMMEDIATE SUPERVISION AND COMPLIES WITH THE LAWS OF THE STATE OF NEW JERSEY

FREDERICK A. CRUCILI
N.J.P.E. & L.S. NO. 19093



| | | |
|----------|----------------------|---------------|
| 12/31/13 | FREDERICK A. CRUCILI | NJPE&LS 19093 |
| 12/31/11 | FREDERICK A. CRUCILI | NJPE&LS 19093 |
| 12/31/10 | FREDERICK A. CRUCILI | NJPE&LS 19093 |
| 12/31/09 | FREDERICK A. CRUCILI | NJPE&LS 19093 |
| 12/12/08 | CHARLES E. SZOVATI | GS-35887 |
| 12/01/07 | CHARLES E. SZOVATI | GS-35887 |
| 11/01/06 | CHARLES E. SZOVATI | GS-35887 |
| DATE | NAME | N.J. LIC. NO. |

REVISIONS

NEW JERSEY DEPARTMENT OF THE TREASURY
DIVISION OF TAXATION
PROPERTY ADMINISTRATION
APPROVED AS A TAX MAP PURSUANT TO THE AUTHORITY OF
N.J.S.A. 961-18 & 96B-4
FOR THE DIRECTOR, DIVISION OF TAXATION
[Signature] C.T.A.
THOMAS F. HELL, CHIEF, LOCAL PROPERTY, FIELD ASSISTANCE
[Signature] C.T.A.
SANTO C. DI DONATO, SUPERVISING FIELD REPRESENTATIVE
DATE: JUN 29 2007 SERIAL NO. 81

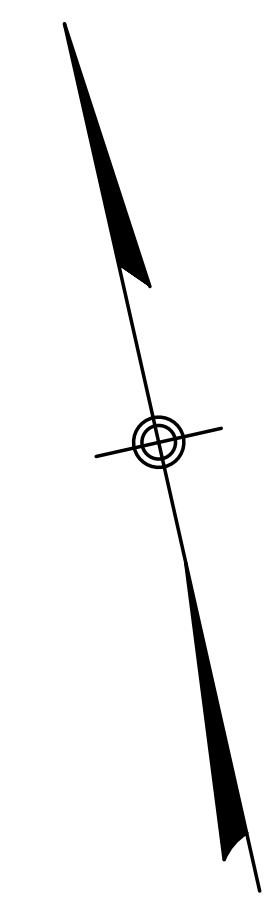
NEW JERSEY DEPARTMENT OF THE TREASURY
DIVISION OF TAXATION
PUBLIC UTILITY TAX BUREAU
APPROVED AS A TAX MAP PURSUANT TO THE
PROVISIONS OF CHAPTER 175, LAWS OF 1913, ETC.
FOR THE DIRECTOR, DIVISION OF TAXATION
[Signature]
DATE: NOV 8 1965 STATE OF NEW JERSEY SERIAL NO. 431

TAX MAP
BOROUGH OF HIGHTSTOWN
MERCER COUNTY, NEW JERSEY
SCALE: 1" = 50' OCTOBER 1965
VAN NOTE - HARVEY ASSOCIATES
CONSULTING ENGINEERS & LAND SURVEYORS
234 NASSAU STREET,
PRINCETON, NEW JERSEY

THIS MAP HAS BEEN REDRAWN USING COMPUTER AIDED DRAFTING/DESIGN (CAD/D) BASED ON THE MAP PREPARED BY J. H. DITMARO, P.L.S., DATED OCTOBER 1965, LAST REVISED BY NEIL I. VAN CLEEF, P.E. & P.L.S., N.J. LIC. NO. 13856, DATED DECEMBER 1, 2004.

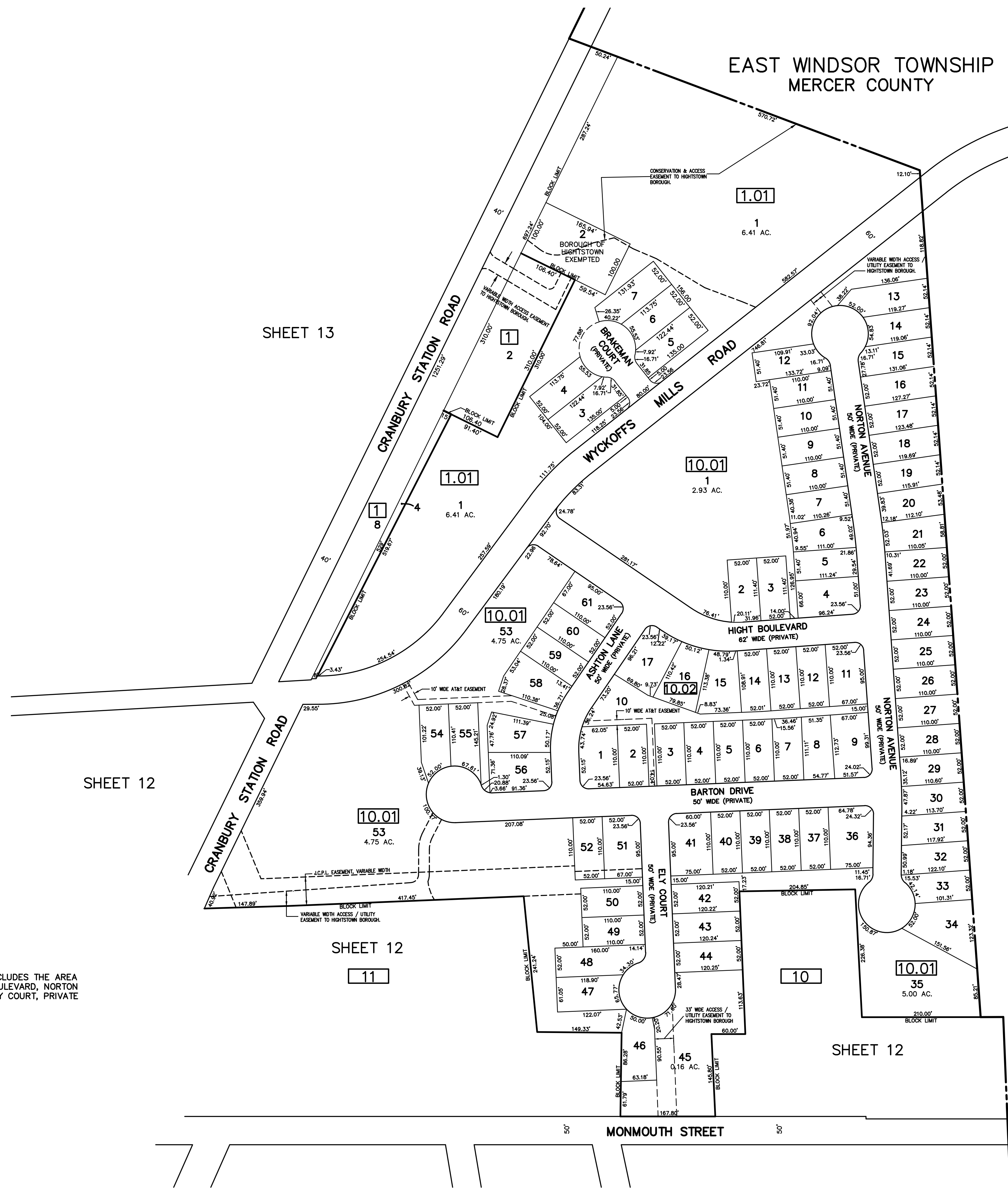
I HEREBY CERTIFY THAT THIS MAP HAS BEEN REVISED UNDER MY IMMEDIATE SUPERVISION AND COMPLIES WITH THE LAWS OF THE STATE OF NEW JERSEY

FREDERICK A. CRUCILI
N.J.P.E. & L.S. NO. 19093



EAST WINDSOR TOWNSHIP
MERCER COUNTY

EAST WINDSOR TOWNSHIP
MERCER COUNTY



SHEET 13

SHEET 12

SHEET 12

SHEET 12

NOTE: BLOCK 10.01, LOT 53, INCLUDES THE AREA WITHIN ASHTON LANE, HIGHT BOULEVARD, NORTON AVENUE, BARTON DRIVE AND ELY COURT, PRIVATE ROADS.

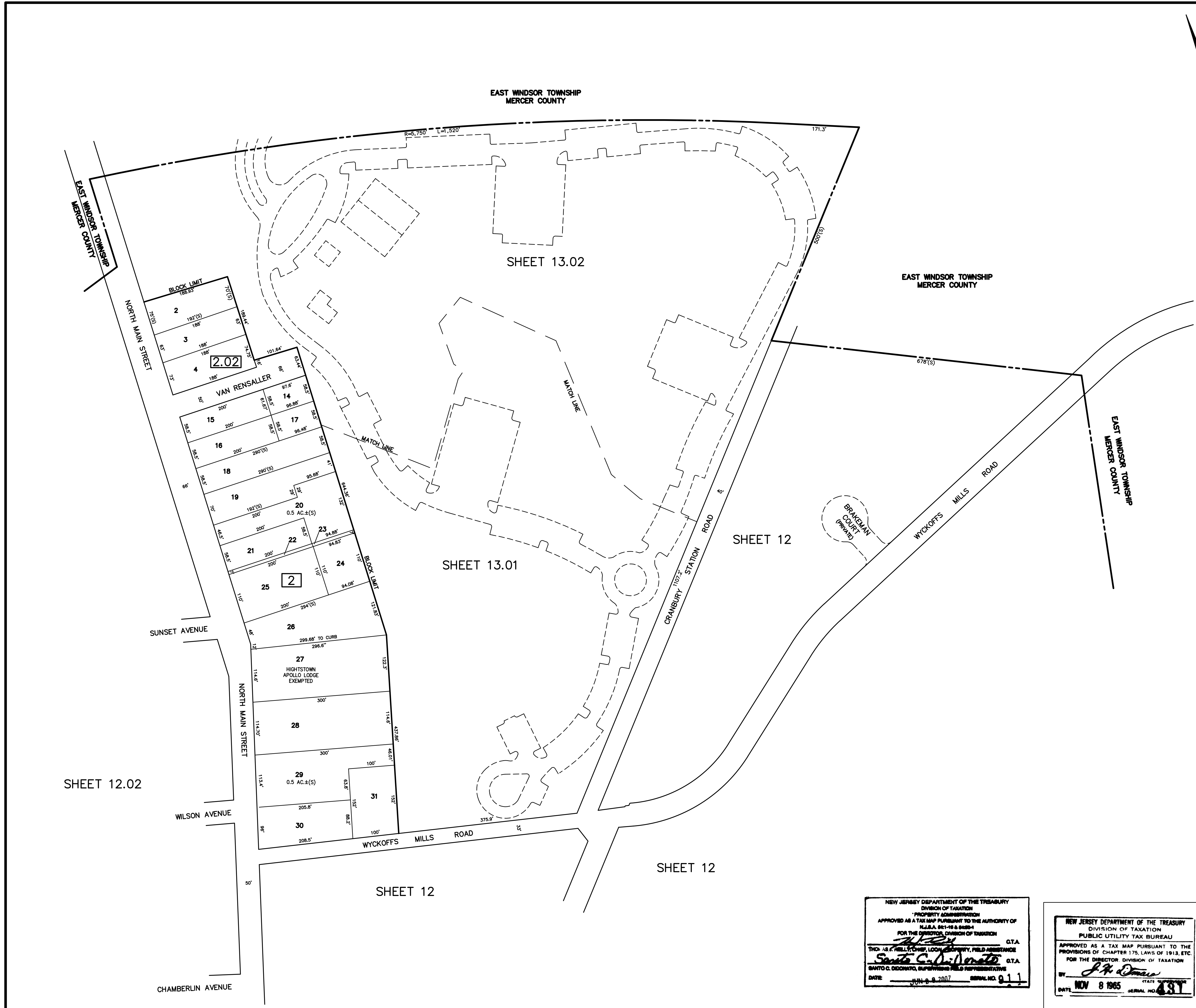
NEW JERSEY DEPARTMENT OF THE TREASURY
DIVISION OF TAXATION
PROPERTY ADMINISTRATION
APPROVED AS A TAX MAP PURSUANT TO THE AUTHORITY OF N.J.S.A. 54:1-16 & 54:1-17
FOR THE DIRECTOR, DIVISION OF TAXATION
G.T.A.
DATE JUN 2 9 2007 SERIAL NO. 911

NEW JERSEY DEPARTMENT OF THE TREASURY
DIVISION OF TAXATION
PUBLIC UTILITY TAX BUREAU
APPROVED AS A TAX MAP PURSUANT TO THE PROVISIONS OF CHAPTER 175, LAWS OF 1913, ETC.
FOR THE DIRECTOR, DIVISION OF TAXATION
G.T.A.
DATE NOV 8 1965 SERIAL NO. 431

| DATE | NAME | N.J. LIC. NO. |
|----------|----------------------|---------------|
| 12/31/13 | FREDERICK A. CRUCILI | NJPE&LS 19093 |
| 12/31/11 | FREDERICK A. CRUCILI | NJPE&LS 19093 |
| 12/31/10 | FREDERICK A. CRUCILI | NJPE&LS 19093 |
| 12/31/09 | FREDERICK A. CRUCILI | NJPE&LS 19093 |
| 12/12/08 | CHARLES E. SZOVATI | GS-35887 |
| 12/01/07 | CHARLES E. SZOVATI | GS-35887 |
| 11/01/06 | CHARLES E. SZOVATI | GS-35887 |

REVISIONS

TAX MAP
BOROUGH OF HIGHTSTOWN
MERCER COUNTY, NEW JERSEY
SCALE: 1" = 100' OCTOBER 1965
VAN NOTE - HARVEY ASSOCIATES
CONSULTING ENGINEERS & LAND SURVEYORS
234 NASSAU STREET,
PRINCETON, NEW JERSEY



THIS MAP HAS BEEN REDRAWN USING COMPUTER AIDED DRAFTING/DESIGN (CAD/D) BASED ON THE MAP PREPARED BY J.H. DITMARS, P.L.S., DATED OCTOBER 1965, LAST REVISED BY NEIL I. VAN CLEEF, P.L.S., N.J. LIC. NO. 13856, DATED DECEMBER 1, 2004

I HEREBY CERTIFY THAT THIS MAP HAS BEEN REVISED UNDER MY IMMEDIATE SUPERVISION AND COMPLIES WITH THE LAWS OF THE STATE OF NEW JERSEY

FREDERICK A. CRUCILI
N.J.P.E. & L.S. NO. 19093

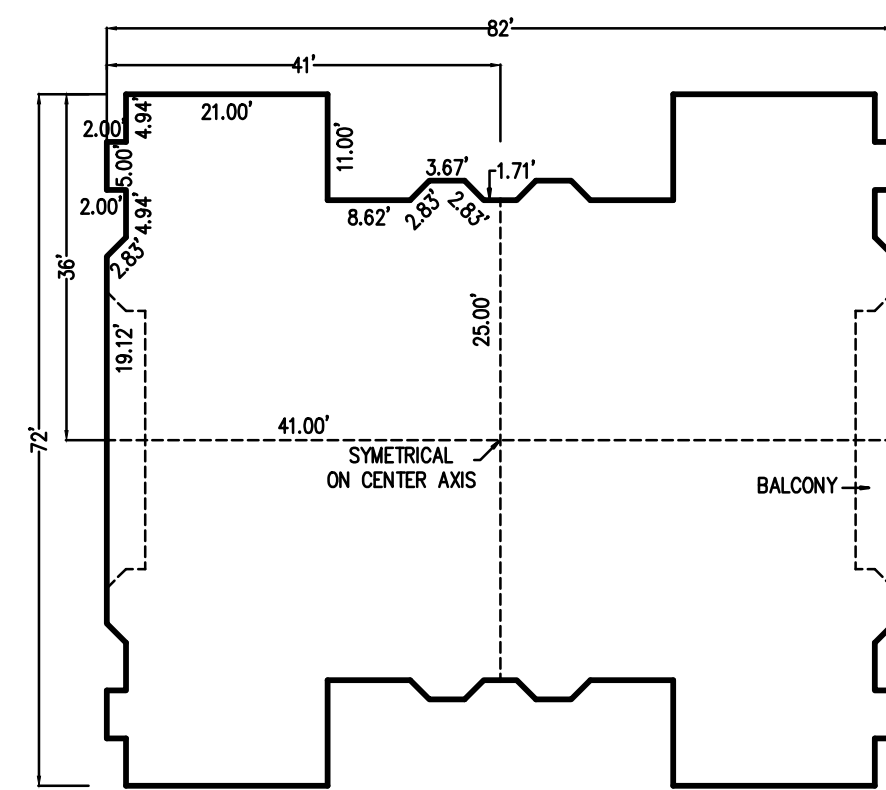
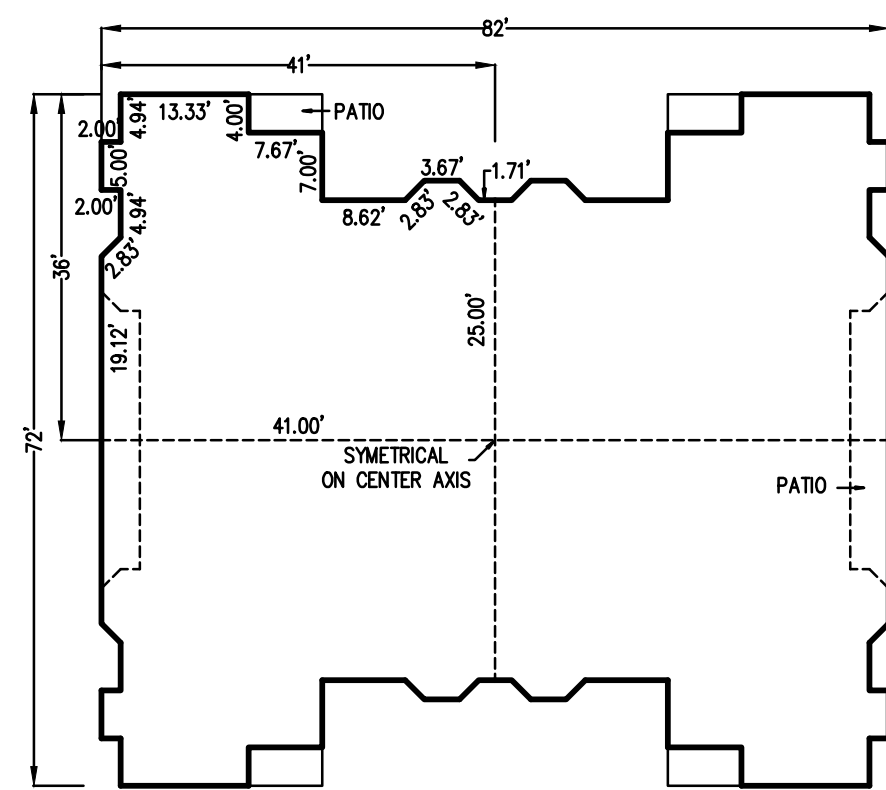
| DATE | NAME | N.J. LIC. NO. |
|----------|----------------------|---------------|
| 12/31/13 | FREDERICK A. CRUCILI | NJPE&LS 19093 |
| 12/31/11 | FREDERICK A. CRUCILI | NJPE&LS 19093 |
| 12/31/10 | FREDERICK A. CRUCILI | NJPE&LS 19093 |
| 12/31/09 | FREDERICK A. CRUCILI | NJPE&LS 19093 |
| 12/12/08 | CHARLES E. SZOVATI | GS-35887 |
| 12/01/07 | CHARLES E. SZOVATI | GS-35887 |
| 11/01/06 | CHARLES E. SZOVATI | GS-35887 |

REVISIONS

TAX MAP
BOROUGH OF HIGHTSTOWN
MERCER COUNTY, NEW JERSEY
SCALE: 1" = 100' OCTOBER 1965
VAN NOTE - HARVEY ASSOCIATES
CONSULTING ENGINEERS & LAND SURVEYORS
234 NASSAU STREET,
PRINCETON, NEW JERSEY

NEW JERSEY DEPARTMENT OF THE TREASURY
DIVISION OF TAXATION
PROPERTY ADMINISTRATION
APPROVED AS A TAX MAP PURSUANT TO THE AUTHORITY OF N.J.S.A. 17:27 & 17:28 FOR THE DIRECTOR, DIVISION OF TAXATION
[Signature] G.T.A.
THOMAS F. HILL, CLERK, LOCAL GOVERNMENT FIELD ASSISTANCE
[Signature] G.T.A.
DATE JUN 8 2007 SERIAL NO. 011

NEW JERSEY DEPARTMENT OF THE TREASURY
DIVISION OF TAXATION
PUBLIC UTILITY TAX BUREAU
APPROVED AS A TAX MAP PURSUANT TO THE PROVISIONS OF CHAPTER 175, LAWS OF 1913, ETC. FOR THE DIRECTOR, DIVISION OF TAXATION
[Signature]
DATE NOV 8 1965 SERIAL NO. 481



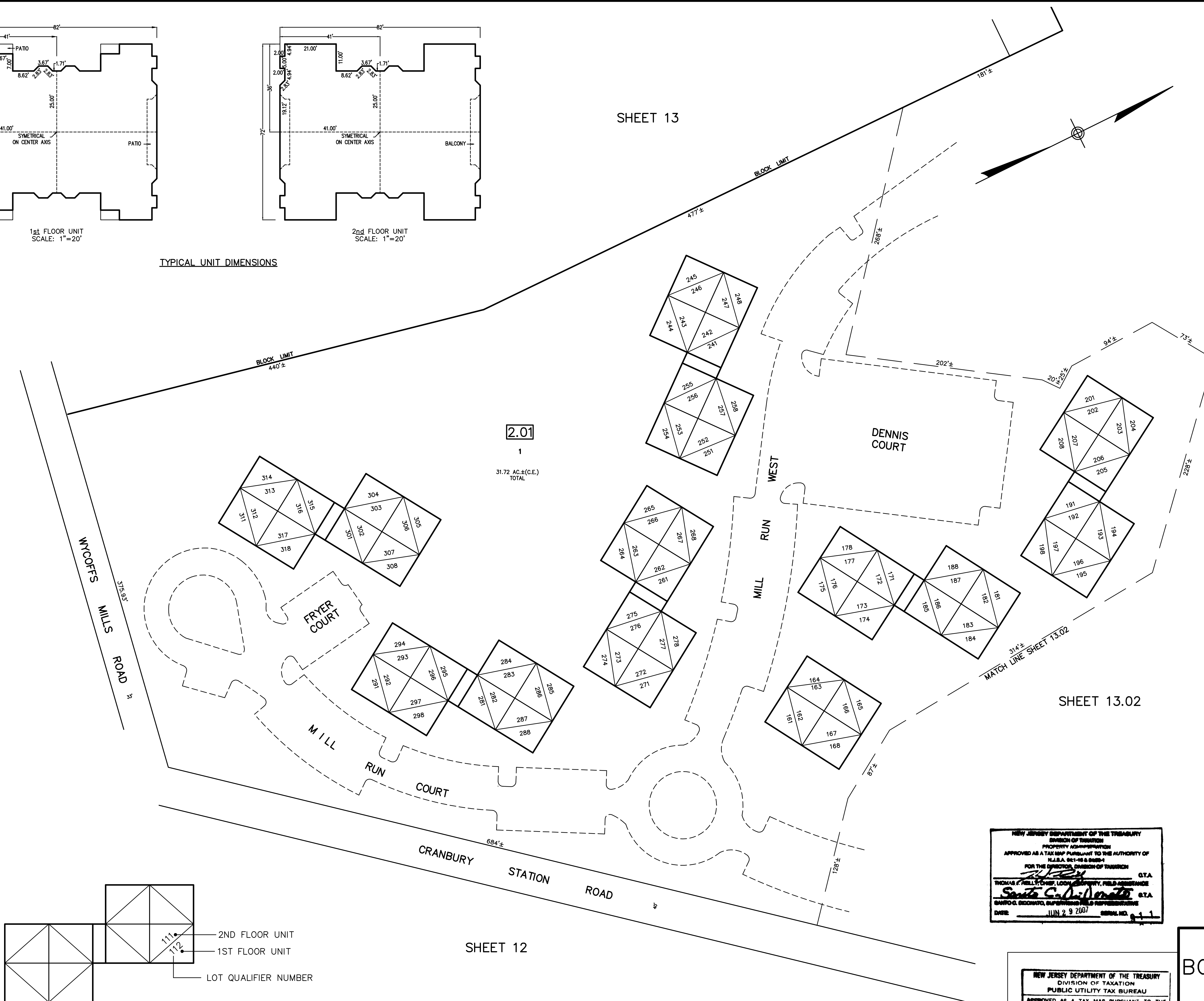
TYPICAL UNIT DIMENSIONS

SHEET 13

THIS MAP HAS BEEN REDRAWN USING COMPUTER AIDED DRAFTING/DESIGN (CAD/D) BASED ON THE MAP PREPARED BY J.H. DITMARS, P.L.S., DATED OCTOBER 1965, LAST REVISED BY NEIL I. VAN CLEEF, P.L.S., N.J. LIC. NO. 13856, DATED DECEMBER 1, 2004

I HEREBY CERTIFY THAT THIS MAP HAS BEEN REVISED UNDER MY IMMEDIATE SUPERVISION AND COMPLIES WITH THE LAWS OF THE STATE OF NEW JERSEY

FREDERICK A. CRUCILI
N.J.P.E. & L.S. NO. 19093



SHEET 13.02

SHEET 12

NEW JERSEY DEPARTMENT OF THE TREASURY
DIVISION OF TAXATION
PROPERTY APPRAISAL
APPROVED AS A TAX MAP PURSUANT TO THE AUTHORITY OF N.J.S.A. 17:27 & 17:28
FOR THE DIRECTOR, DIVISION OF TAXATION
DATE: JUN 29 2007

| DATE | NAME | N.J. LIC. NO. |
|----------|----------------------|---------------|
| 12/31/13 | FREDERICK A. CRUCILI | NJPE&LS 19093 |
| 12/31/11 | FREDERICK A. CRUCILI | NJPE&LS 19093 |
| 12/31/10 | FREDERICK A. CRUCILI | NJPE&LS 19093 |
| 12/31/09 | FREDERICK A. CRUCILI | NJPE&LS 19093 |
| 12/12/08 | CHARLES E. SZOVATI | GS-35887 |
| 12/01/07 | CHARLES E. SZOVATI | GS-35887 |
| 11/01/06 | CHARLES E. SZOVATI | GS-35887 |

REVISIONS

NEW JERSEY DEPARTMENT OF THE TREASURY
DIVISION OF TAXATION
PUBLIC UTILITY TAX BUREAU
APPROVED AS A TAX MAP PURSUANT TO THE PROVISIONS OF CHAPTER 175, LAWS OF 1913, ETC.
FOR THE DIRECTOR, DIVISION OF TAXATION
DATE: NOV 8 1965

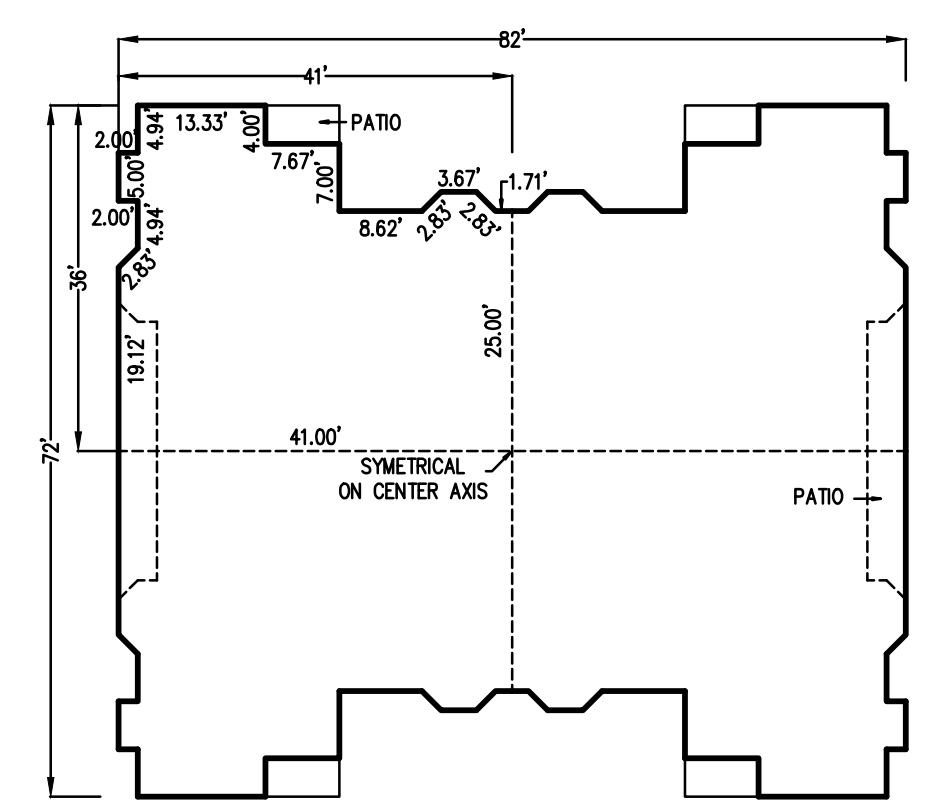
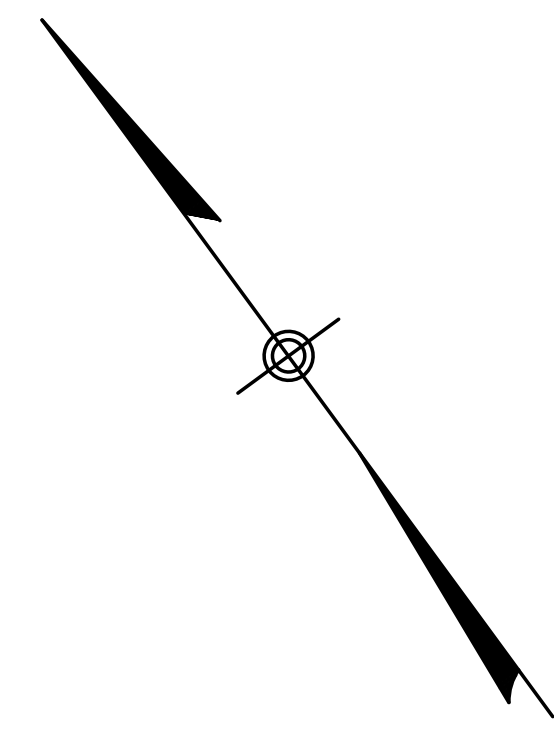
TAX MAP
BOROUGH OF HIGHTSTOWN
MERCER COUNTY, NEW JERSEY
SCALE: 1" = 50' OCTOBER 1965
VAN NOTE - HARVEY ASSOCIATES
CONSULTING ENGINEERS & LAND SURVEYORS
234 NASSAU STREET,
PRINCETON, NEW JERSEY

| REVISIONS | | |
|-----------|----------------------|---------------|
| DATE | NAME | N.J. LIC. NO. |
| 11/01/06 | CHARLES E. SZOVATI | GS-35887 |
| 12/01/07 | CHARLES E. SZOVATI | GS-35887 |
| 12/12/08 | CHARLES E. SZOVATI | GS-35887 |
| 12/31/09 | FREDERICK A. CRUCILI | NJPE&LS 19093 |
| 12/31/10 | FREDERICK A. CRUCILI | NJPE&LS 19093 |
| 12/31/11 | FREDERICK A. CRUCILI | NJPE&LS 19093 |
| 12/31/13 | FREDERICK A. CRUCILI | NJPE&LS 19093 |

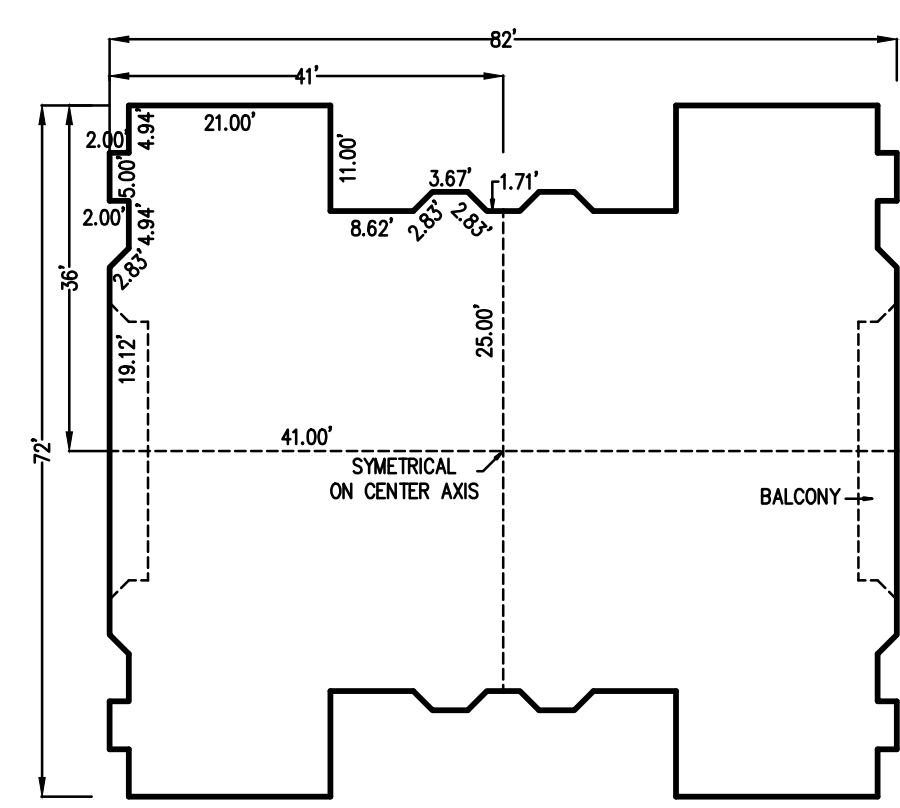
THIS MAP HAS BEEN REDRAWN USING COMPUTER AIDED DRAFTING/DESIGN (CAD/D) BASED ON THE MAP PREPARED BY J.H. DITMARS, P.L.S., DATED OCTOBER 1965, LAST REVISED BY NEIL I. VAN CLEEF, P.L.S., N.J. LIC. NO. 13856, DATED DECEMBER 1, 2004.

I HEREBY CERTIFY THAT THIS MAP HAS BEEN REVISED UNDER MY IMMEDIATE SUPERVISION AND COMPLIES WITH THE LAWS OF THE STATE OF NEW JERSEY.

FREDERICK A. CRUCILI
N.J.P.E. & L.S. NO. 19093

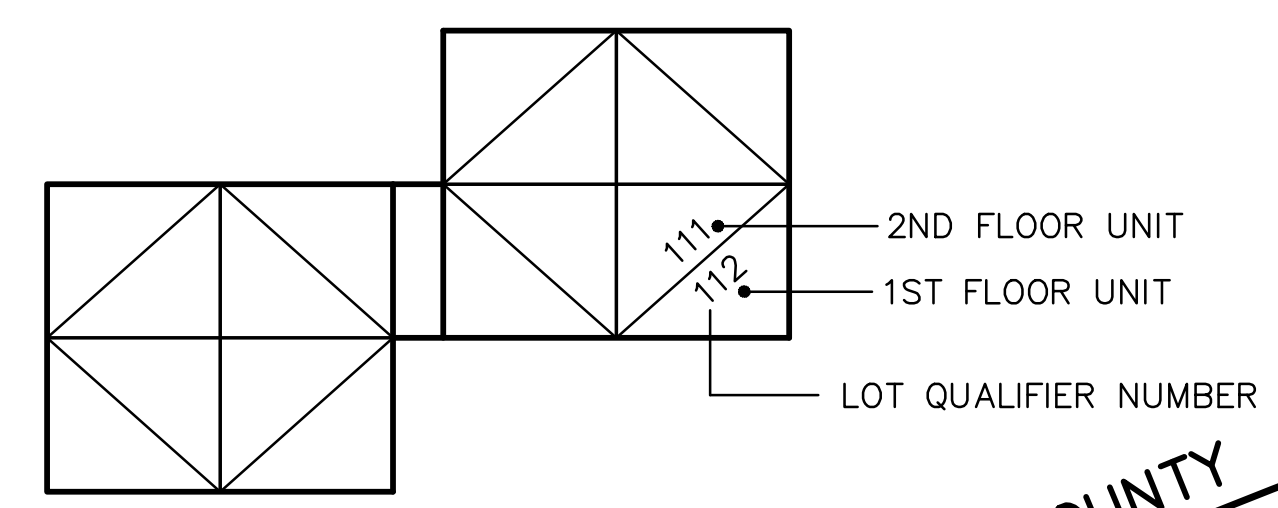


1st FLOOR UNIT
SCALE: 1"=20'

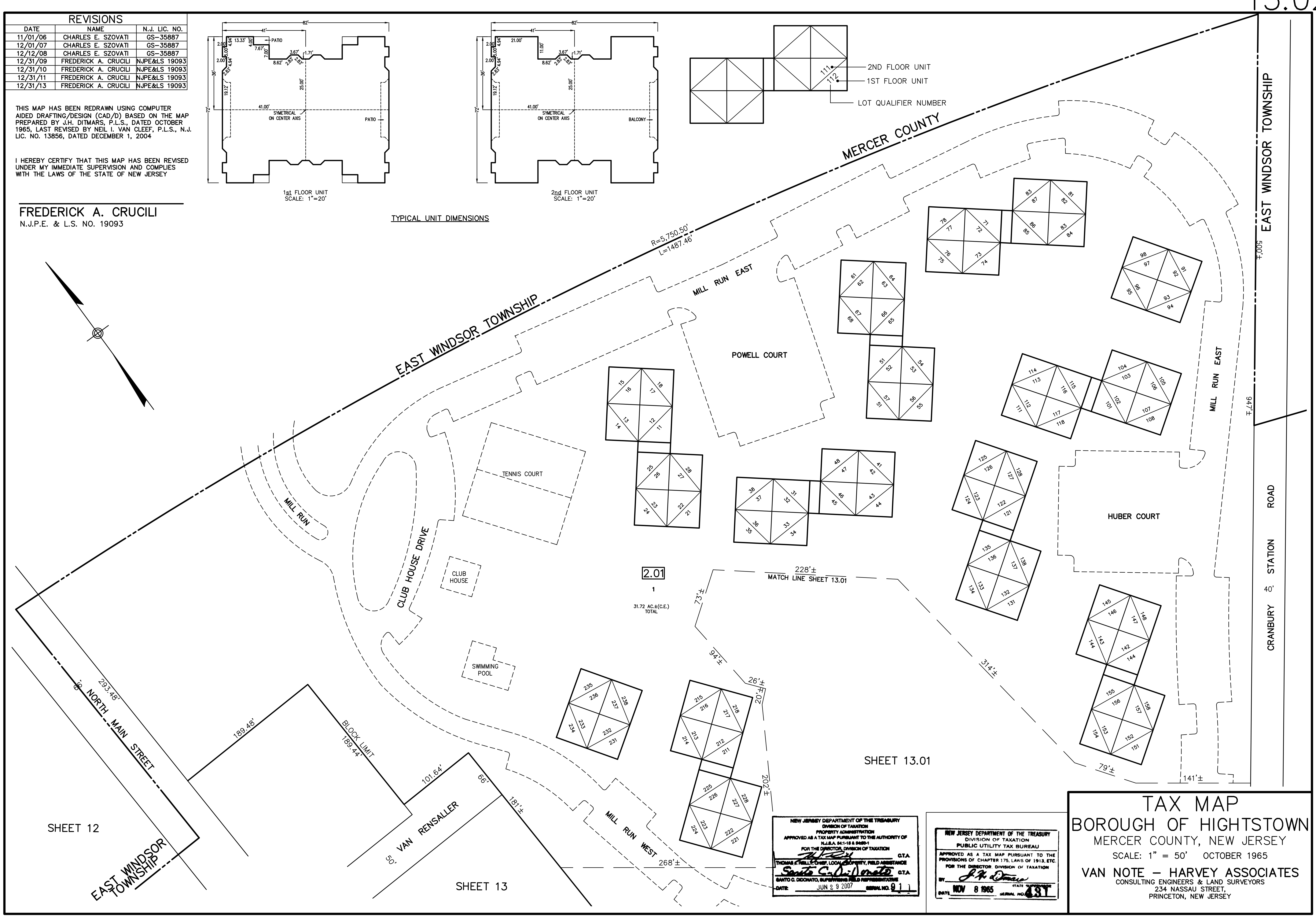


2nd FLOOR UNIT
SCALE: 1"=20'

TYPICAL UNIT DIMENSIONS



2ND FLOOR UNIT
1ST FLOOR UNIT
LOT QUALIFIER NUMBER



SHEET 12

SHEET 13

SHEET 13.01

NEW JERSEY DEPARTMENT OF THE TREASURY
DIVISION OF TAXATION
PROPERTY ADMINISTRATION
APPROVED AS A TAX MAP PURSUANT TO THE AUTHORITY OF
N.J.S.A. 54:11B & 54:11C
FOR THE DIRECTOR, DIVISION OF TAXATION
Thomas J. Kelly G.T.A.
THOMAS J. KELLY, CHIEF, LOCAL PROPERTY, FIELD ASSISTANCE
Frederick A. Crucili G.T.A.
FREDERICK A. CRUCILI, SUPERVISING FIELD REPRESENTATIVE
DATE: JUN 29 2007 SERIAL NO. 911

NEW JERSEY DEPARTMENT OF THE TREASURY
DIVISION OF TAXATION
PUBLIC UTILITY TAX BUREAU
APPROVED AS A TAX MAP PURSUANT TO THE
PROVISIONS OF CHAPTER 175, LAWS OF 1913, ETC.
FOR THE DIRECTOR, DIVISION OF TAXATION
J.P. Dineen
DATE: NOV 8 1965 SERIAL NO. 437

TAX MAP
BOROUGH OF HIGHTSTOWN
MERCER COUNTY, NEW JERSEY
SCALE: 1" = 50' OCTOBER 1965
VAN NOTE - HARVEY ASSOCIATES
CONSULTING ENGINEERS & LAND SURVEYORS
234 NASSAU STREET,
PRINCETON, NEW JERSEY

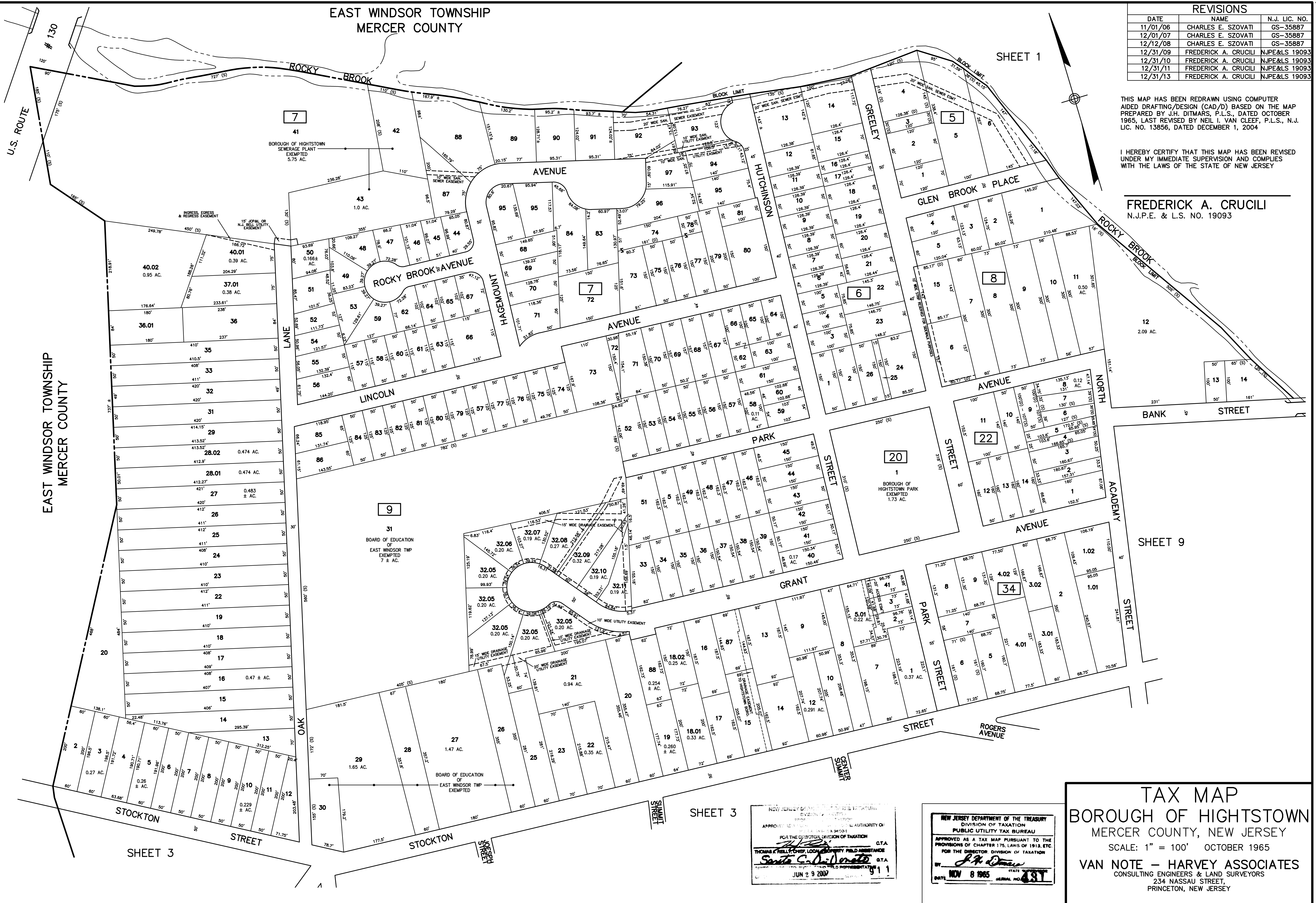
EAST WINDSOR TOWNSHIP
MERCER COUNTY

| REVISIONS | | |
|-----------|----------------------|---------------|
| DATE | NAME | N.J. LIC. NO. |
| 11/01/06 | CHARLES E. SZOVATI | GS-35887 |
| 12/01/07 | CHARLES E. SZOVATI | GS-35887 |
| 12/12/08 | CHARLES E. SZOVATI | GS-35887 |
| 12/31/09 | FREDERICK A. CRUCILI | NJPE&LS 19093 |
| 12/31/10 | FREDERICK A. CRUCILI | NJPE&LS 19093 |
| 12/31/11 | FREDERICK A. CRUCILI | NJPE&LS 19093 |
| 12/31/13 | FREDERICK A. CRUCILI | NJPE&LS 19093 |

THIS MAP HAS BEEN REDRAWN USING COMPUTER AIDED DRAFTING/DESIGN (CAD/D) BASED ON THE MAP PREPARED BY J.H. DITMARS, P.L.S., DATED OCTOBER 1965, LAST REVISED BY NEIL I. VAN CLEEF, P.L.S., N.J. LIC. NO. 13856, DATED DECEMBER 1, 2004.

I HEREBY CERTIFY THAT THIS MAP HAS BEEN REVISED UNDER MY IMMEDIATE SUPERVISION AND COMPLIES WITH THE LAWS OF THE STATE OF NEW JERSEY

FREDERICK A. CRUCILI
N.J.P.E. & L.S. NO. 19093



SHEET 9

SHEET 3

NEW JERSEY DEPARTMENT OF THE TREASURY
DIVISION OF TAXATION
APPROVED AS A TAX MAP PURSUANT TO THE PROVISIONS OF CHAPTER 175, LAWS OF 1913, ETC.
FOR THE DIRECTOR, DIVISION OF TAXATION
THOMAS J. KELLY, CHIEF, LOCAL GOVERNMENT FIELD ASSISTANCE C.T.A.
SANTA C. DIAMANTE, C.T.A.
JUN 29 2007 9 1

NEW JERSEY DEPARTMENT OF THE TREASURY
DIVISION OF TAXATION
PUBLIC UTILITY TAX BUREAU
APPROVED AS A TAX MAP PURSUANT TO THE PROVISIONS OF CHAPTER 175, LAWS OF 1913, ETC.
FOR THE DIRECTOR, DIVISION OF TAXATION
BY *J.P. Dima*
DATE NOV 8 1965 SERIAL NO. 431

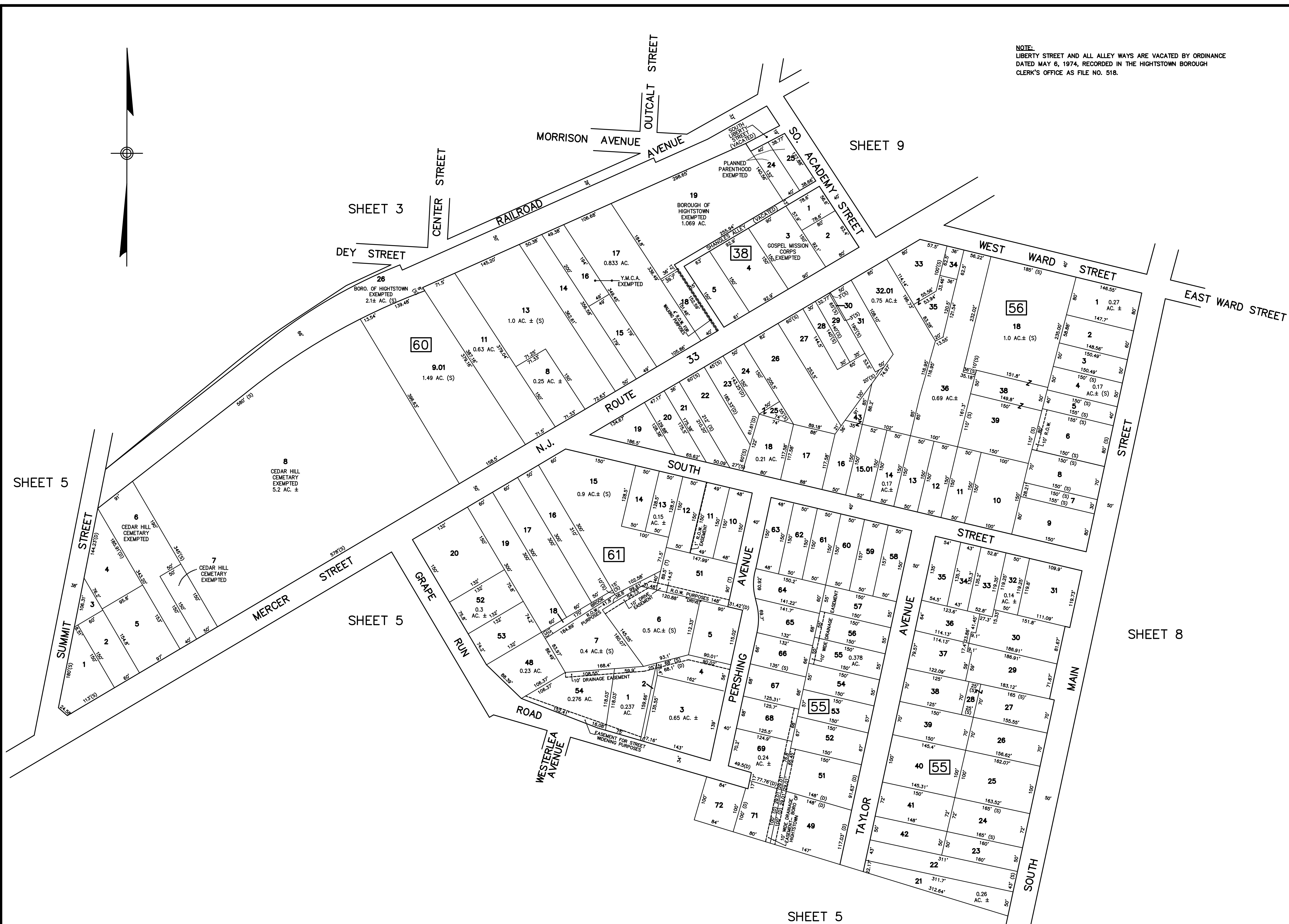
TAX MAP
BOROUGH OF HIGHTSTOWN
MERCER COUNTY, NEW JERSEY
SCALE: 1" = 100' OCTOBER 1965
VAN NOTE - HARVEY ASSOCIATES
CONSULTING ENGINEERS & LAND SURVEYORS
234 NASSAU STREET,
PRINCETON, NEW JERSEY

NOTE:
LIBERTY STREET AND ALL ALLEY WAYS ARE VACATED BY ORDINANCE
DATED MAY 6, 1974, RECORDED IN THE HIGHTSTOWN BOROUGH
CLERK'S OFFICE AS FILE NO. 518.

THIS MAP HAS BEEN REDRAWN USING COMPUTER
AIDED DRAFTING/DESIGN (CAD/D) BASED ON THE MAP
PREPARED BY J.H. DITMARS, P.L.S., DATED OCTOBER
1965, LAST REVISED BY NEIL I. VAN CLEEF, P.L.S., N.J.
LIC. NO. 13856, DATED DECEMBER 1, 2004

I HEREBY CERTIFY THAT THIS MAP HAS BEEN REVISED
UNDER MY IMMEDIATE SUPERVISION AND COMPLIES
WITH THE LAWS OF THE STATE OF NEW JERSEY

FREDERICK A. CRUCILI
N.J.P.E. & L.S. NO. 19093



| DATE | NAME | N.J. LIC. NO. |
|----------|----------------------|---------------|
| 12/31/13 | FREDERICK A. CRUCILI | NJPE&LS 19093 |
| 12/31/11 | FREDERICK A. CRUCILI | NJPE&LS 19093 |
| 7/21/11 | FREDERICK A. CRUCILI | NJPE&LS 19093 |
| 12/31/10 | FREDERICK A. CRUCILI | NJPE&LS 19093 |
| 12/31/09 | FREDERICK A. CRUCILI | NJPE&LS 19093 |
| 12/12/08 | CHARLES E. SZOVATI | GS-35887 |
| 12/01/07 | CHARLES E. SZOVATI | GS-35887 |
| 11/01/06 | CHARLES E. SZOVATI | GS-35887 |

REVISIONS

NEW JERSEY DEPARTMENT OF THE TREASURY
DIVISION OF TAXATION
APPROVED AS A TAX MAP PURSUANT TO THE
PROVISIONS OF CHAPTER 175, LAWS OF 1913, ETC.
FOR THE DIRECTOR, DIVISION OF TAXATION

C.T.A.
THOMAS E. PELLICCIANI, LOCAL REPRESENTATIVE
Santo C. DiDonato, SUPERVISING FIELD REPRESENTATIVE
DATE: JUN 29 2007 SERIAL NO. 911

NEW JERSEY DEPARTMENT OF THE TREASURY
DIVISION OF TAXATION
PUBLIC UTILITY TAX BUREAU
APPROVED AS A TAX MAP PURSUANT TO THE
PROVISIONS OF CHAPTER 175, LAWS OF 1913, ETC.
FOR THE DIRECTOR, DIVISION OF TAXATION

DATE: NOV 8 1965 SERIAL NO. 481

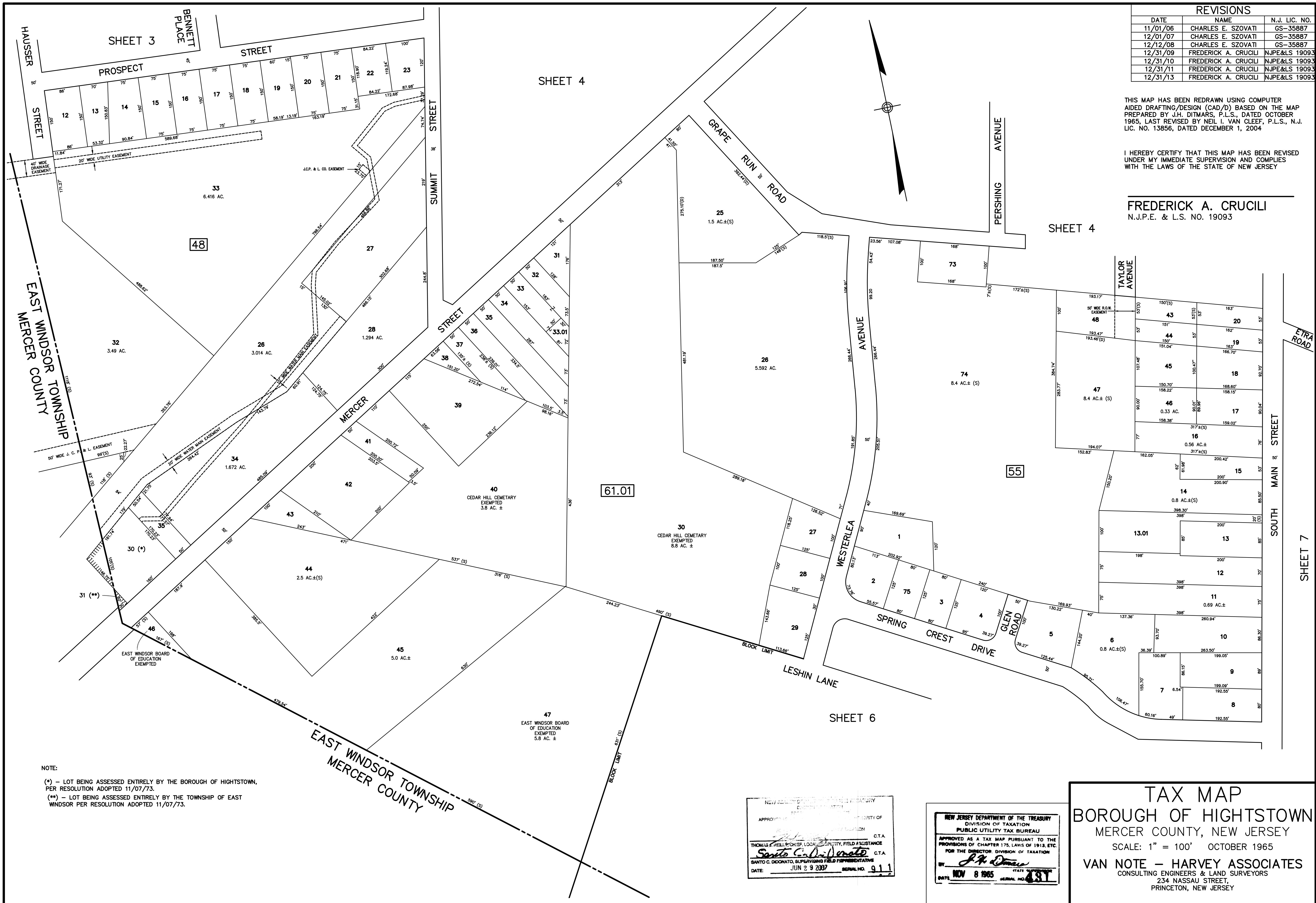
TAX MAP
BOROUGH OF HIGHTSTOWN
MERCER COUNTY, NEW JERSEY
SCALE: 1" = 100' OCTOBER 1965
VAN NOTE - HARVEY ASSOCIATES
CONSULTING ENGINEERS & LAND SURVEYORS
234 NASSAU STREET,
PRINCETON, NEW JERSEY

| REVISIONS | | |
|-----------|----------------------|---------------|
| DATE | NAME | N.J. LIC. NO. |
| 11/01/06 | CHARLES E. SZOVATI | GS-35887 |
| 12/01/07 | CHARLES E. SZOVATI | GS-35887 |
| 12/12/08 | CHARLES E. SZOVATI | GS-35887 |
| 12/31/09 | FREDERICK A. CRUCILI | NJPE&LS 19093 |
| 12/31/10 | FREDERICK A. CRUCILI | NJPE&LS 19093 |
| 12/31/11 | FREDERICK A. CRUCILI | NJPE&LS 19093 |
| 12/31/13 | FREDERICK A. CRUCILI | NJPE&LS 19093 |

THIS MAP HAS BEEN REDRAWN USING COMPUTER AIDED DRAFTING/DESIGN (CAD/D) BASED ON THE MAP PREPARED BY J.H. DITMARS, P.L.S., DATED OCTOBER 1965, LAST REVISED BY NEIL I. VAN CLEEF, P.L.S., N.J. LIC. NO. 13856, DATED DECEMBER 1, 2004

I HEREBY CERTIFY THAT THIS MAP HAS BEEN REVISED UNDER MY IMMEDIATE SUPERVISION AND COMPLIES WITH THE LAWS OF THE STATE OF NEW JERSEY

FREDERICK A. CRUCILI
N.J.P.E. & L.S. NO. 19093



NOTE:
 (*) - LOT BEING ASSESSED ENTIRELY BY THE BOROUGH OF HIGHTSTOWN, PER RESOLUTION ADOPTED 11/07/73.
 (**) - LOT BEING ASSESSED ENTIRELY BY THE TOWNSHIP OF EAST WINDSOR PER RESOLUTION ADOPTED 11/07/73.

NEW JERSEY DEPARTMENT OF TREASURY
 DIVISION OF TAXATION
 PUBLIC UTILITY TAX BUREAU
 APPROVED AS A TAX MAP PURSUANT TO THE PROVISIONS OF CHAPTER 175, LAWS OF 1913, ETC.
 FOR THE DIRECTOR, DIVISION OF TAXATION
 BY: *Santo C. DiDonato* C.T.A.
 SANTO C. DIDONATO, SUPERVISING FIELD REPRESENTATIVE
 DATE: JUN 29 2007 SERIAL NO. 911

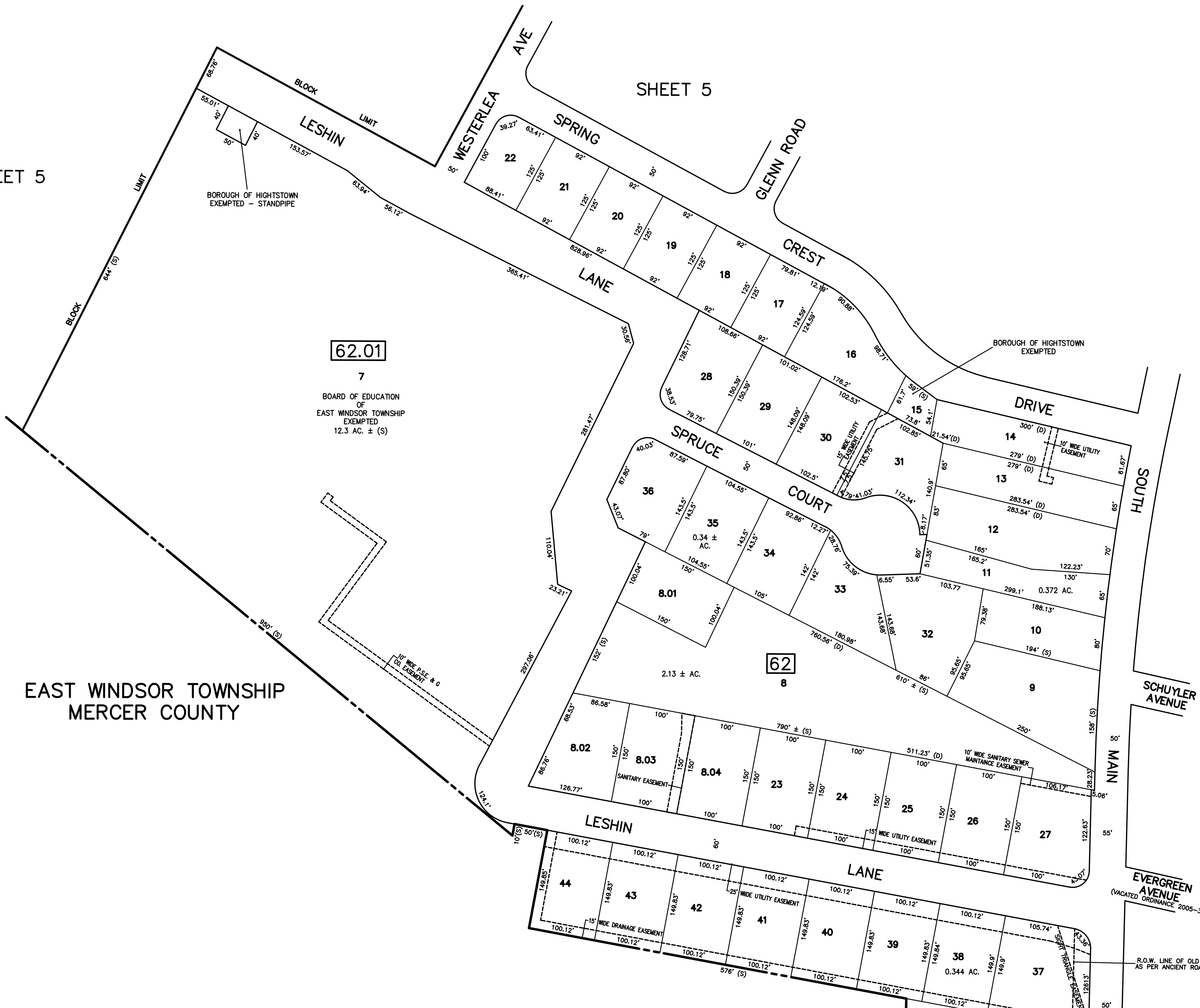
NEW JERSEY DEPARTMENT OF TREASURY
 DIVISION OF TAXATION
 PUBLIC UTILITY TAX BUREAU
 APPROVED AS A TAX MAP PURSUANT TO THE PROVISIONS OF CHAPTER 175, LAWS OF 1913, ETC.
 FOR THE DIRECTOR, DIVISION OF TAXATION
 BY: *F.A. Crucili* C.T.A.
 DATE: NOV 8 1965 SERIAL NO. 481

TAX MAP
BOROUGH OF HIGHTSTOWN
 MERCER COUNTY, NEW JERSEY
 SCALE: 1" = 100' OCTOBER 1965
VAN NOTE - HARVEY ASSOCIATES
 CONSULTING ENGINEERS & LAND SURVEYORS
 234 NASSAU STREET,
 PRINCETON, NEW JERSEY

SHEET 5

SHEET 5

SHEET 7



EAST WINDSOR TOWNSHIP
MERCER COUNTY

EAST WINDSOR TOWNSHIP
MERCER COUNTY

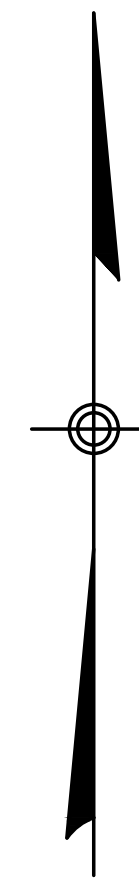
BOROUGH OF HIGHTSTOWN
EXEMPTED - STANDPIPE

BOROUGH OF HIGHTSTOWN
EXEMPTED

62.01

62

62.02



THIS MAP HAS BEEN REDRAWN USING COMPUTER AIDED DRAFTING/DESIGN (CAD/D) BASED ON THE MAP PREPARED BY J.H. DITMARS, P.L.S., DATED OCTOBER 1965, LAST REVISED BY NEIL I. VAN CLEEF, P.L.S., N.J. LIC. NO. 13856, DATED DECEMBER 1, 2004

I HEREBY CERTIFY THAT THIS MAP HAS BEEN REVISED UNDER MY IMMEDIATE SUPERVISION AND COMPLIES WITH THE LAWS OF THE STATE OF NEW JERSEY

FREDERICK A. CRUCILI
N.J.P.E. & L.S. NO. 19093

EAST WINDSOR TOWNSHIP
MERCER COUNTY

EAST WINDSOR TOWNSHIP
MERCER COUNTY

NOTE:
 (*) - LOT BEING ASSESSED ENTIRELY BY THE BOROUGH OF HIGHTSTOWN, PER RESOLUTION ADOPTED 11/07/73.
 (***) - LOT BEING ASSESSED ENTIRELY BY THE TOWNSHIP OF EAST WINDSOR PER RESOLUTION ADOPTED 11/07/73.

NEW JERSEY DEPARTMENT OF THE TREASURY
 DIVISION OF TAXATION
 PROPERTY ADMINISTRATION
 APPROVED AS A TAX MAP PURSUANT TO THE AUTHORITY OF N.J.S.A. 54:1-15 & 54:20-1
 FOR THE DIRECTOR, DIVISION OF TAXATION
 THOMAS E. HILL, CHIEF, LOCAL PROPERTY FIELD ASSISTANCE C.T.A.
 Santo C. DiVeneto, C.T.A.
 SANTO C. DICONATO, SUPERVISOR, FIELD REPRESENTATIVE
 DATE: JUN 29 2007 SERIAL NO. 911

NEW JERSEY DEPARTMENT OF THE TREASURY
 DIVISION OF TAXATION
 PUBLIC UTILITY TAX BUREAU
 APPROVED AS A TAX MAP PURSUANT TO THE PROVISIONS OF CHAPTER 175, LAWS OF 1913, ETC.
 FOR THE DIRECTOR, DIVISION OF TAXATION
 BY: J.A. Deane
 DATE: NOV 8 1965 SERIAL NO. 4317

| | | |
|----------|----------------------|---------------|
| 12/31/13 | FREDERICK A. CRUCILI | NJPE&LS 19093 |
| 12/31/11 | FREDERICK A. CRUCILI | NJPE&LS 19093 |
| 12/31/10 | FREDERICK A. CRUCILI | NJPE&LS 19093 |
| 12/31/09 | FREDERICK A. CRUCILI | NJPE&LS 19093 |
| 12/12/08 | CHARLES E. SZOVATI | GS-35887 |
| 12/01/07 | CHARLES E. SZOVATI | GS-35887 |
| 11/01/06 | CHARLES E. SZOVATI | GS-35887 |
| DATE | NAME | N.J. LIC. NO. |

REVISIONS

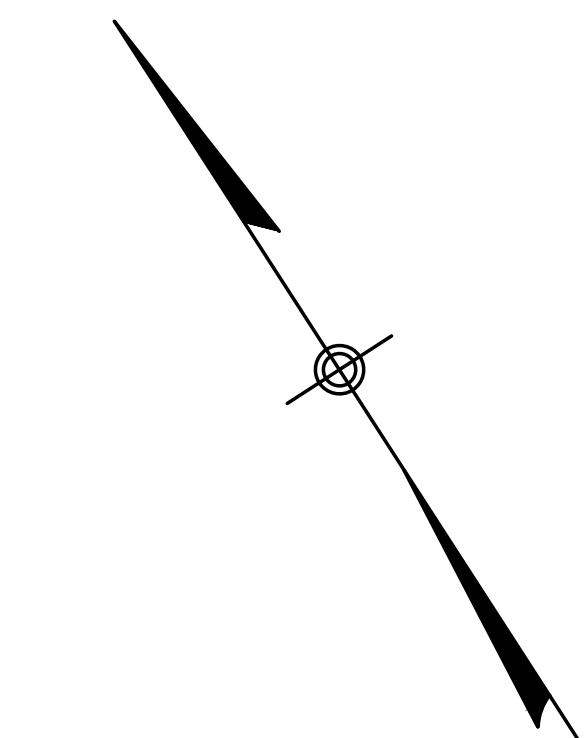
TAX MAP
BOROUGH OF HIGHTSTOWN
 MERCER COUNTY, NEW JERSEY
 SCALE: 1" = 100' OCTOBER 1965
VAN NOTE - HARVEY ASSOCIATES
 CONSULTING ENGINEERS & LAND SURVEYORS
 234 NASSAU STREET,
 PRINCETON, NEW JERSEY

SHEET 8

THIS MAP HAS BEEN REDRAWN USING COMPUTER AIDED DRAFTING/DESIGN (CAD/D) BASED ON THE MAP PREPARED BY J.H. DITMARS, P.L.S., DATED OCTOBER 1965, LAST REVISED BY NEIL I. VAN CLEEF, P.L.S., N.J. LIC. NO. 13856, DATED DECEMBER 1, 2004

I HEREBY CERTIFY THAT THIS MAP HAS BEEN REVISED UNDER MY IMMEDIATE SUPERVISION AND COMPLIES WITH THE LAWS OF THE STATE OF NEW JERSEY

FREDERICK A. CRUCILI
N.J.P.E. & L.S. NO. 19093



SHEET 5

SHEET 6

| DATE | NAME | N.J. LIC. NO. |
|----------|----------------------|---------------|
| 12/31/13 | FREDERICK A. CRUCILI | NJPE&LS 19093 |
| 12/31/11 | FREDERICK A. CRUCILI | NJPE&LS 19093 |
| 12/31/10 | FREDERICK A. CRUCILI | NJPE&LS 19093 |
| 12/31/09 | FREDERICK A. CRUCILI | NJPE&LS 19093 |
| 12/12/08 | CHARLES E. SZOVATI | GS-35887 |
| 12/01/07 | CHARLES E. SZOVATI | GS-35887 |
| 11/01/06 | CHARLES E. SZOVATI | GS-35887 |

REVISIONS

NEW JERSEY DEPARTMENT OF THE TREASURY
DIVISION OF TAXATION
PROPERTY ADMINISTRATION
APPROVED AS A TAX MAP PURSUANT TO THE AUTHORITY OF
N.J.S.A. 54:1-19 & 54:5-1
FOR THE DIRECTOR, DIVISION OF TAXATION
[Signature] C.T.A.
THOMAS C. DIAMATO, LOCAL GOVERNMENT FIELD ASSISTANCE
[Signature] C.T.A.
SANTO C. DIAMATO, SUPERVISOR FIELD REPRESENTATIVE
DATE JUN 29 2007 SERIAL NO. 911

NEW JERSEY DEPARTMENT OF THE TREASURY
DIVISION OF TAXATION
PUBLIC UTILITY TAX BUREAU
APPROVED AS A TAX MAP PURSUANT TO THE
PROVISIONS OF CHAPTER 175, LAWS OF 1913, ETC.
FOR THE DIRECTOR, DIVISION OF TAXATION
[Signature]
DATE NOV 8 1965 SERIAL NO. 431

TAX MAP
BOROUGH OF HIGHTSTOWN
MERCER COUNTY, NEW JERSEY
SCALE: 1" = 100' OCTOBER 1965
VAN NOTE - HARVEY ASSOCIATES
CONSULTING ENGINEERS & LAND SURVEYORS
234 NASSAU STREET,
PRINCETON, NEW JERSEY

